

HUNTERS®

HERE TO GET *you* THERE

109 Sun Lane, Gravesend, DA12 5HW

Offers In Excess Of £300,000

Property Images



HUNTERS®

HERE TO GET *you* THERE

Property Images

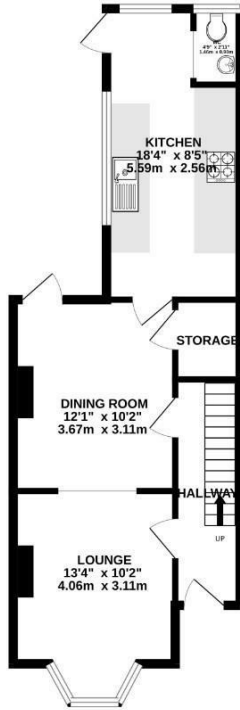


HUNTERS®

HERE TO GET *you* THERE

GROUND FLOOR
471 sq.ft. (43.8 sq.m.) approx.

1ST FLOOR
395 sq.ft. (36.7 sq.m.) approx.



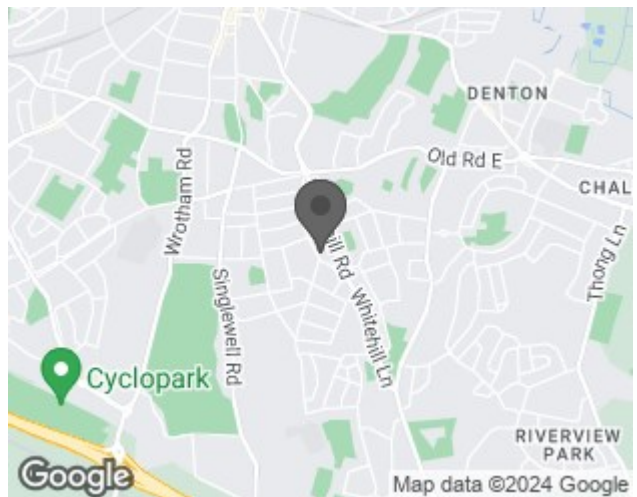
TOTAL FLOOR AREA: 866 sq.ft. (80.4 sq.m.) approx.

Whilst every attempt has been made to ensure the accuracy of the floorplan contained here, measurements of items, fixtures, fittings and any other items are approximate and no responsibility is taken for any error, omission or mis-statement. This plan is for illustrative purposes only and should be used as such by any prospective purchaser. The services, systems and appliances shown have not been tested and no guarantee as to their operability or efficiency can be given.
Made with Hunterplan CCi24.

EPC

Energy Efficiency Rating		Current	Potential
<i>Very energy efficient - lower running costs</i>			
(92 plus) A			82
(81-91) B			
(69-80) C			
(55-68) D		64	
(39-54) E			
(21-38) F			
(1-20) G			
<i>Not energy efficient - higher running costs</i>			
England & Wales	EU Directive 2002/91/EC		

Map



Details

Type: House - Terraced Beds: 2 Bathrooms: 1 Receptions: 1 Tenure: Freehold

Summary

We are delighted to offer for sale this two bedroom terraced home situated on Sun Lane. This property is well presented, making it an ideal choice for a first time buyer looking to step onto the property ladder.

Located close to Gravesend Town Centre makes commuting simple for those needing to travel as you'll find the Mainline Railway Station offering fast services into London.

The accommodation comprises of lounge, kitchen and WC. Whilst the second boast two bedrooms, bathroom and a loft providing extra storage space.

Externally, there is a rear garden with a decked area, laid to lawn and a shed to the rear which the current owners use as a bar, great for those seeking entertainment!

Don't miss out on the opportunity to own this lovely home, so call now to arrange an immediate viewing!

Features

- TWO BEDROOMS • LOUNGE • DINING ROOM • KITCHEN • BATHROOM • DOWNSTAIRS WC • WELL PRESENTED THROUGHOUT • GARDEN • IDEAL FIRST TIME PURCHASE • EPC RATING C