

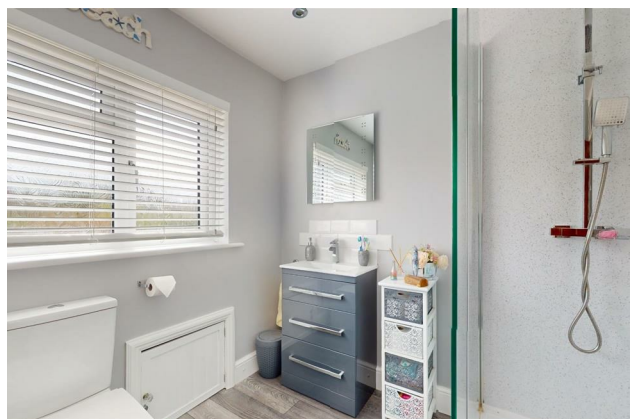
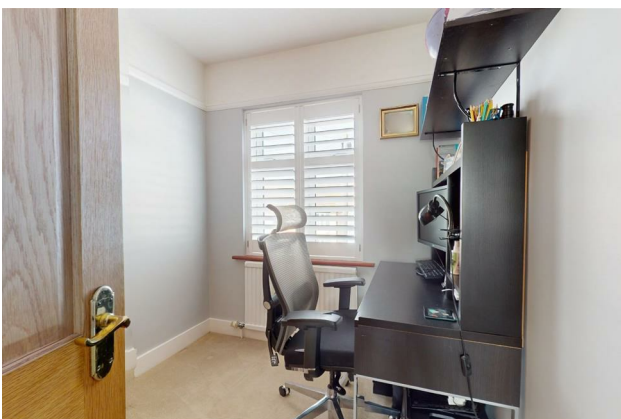
# HUNTERS®

HERE TO GET *you* THERE

25 The Fairway, Gravesend, DA11 7LN

Guide Price £450,000

Property Images





# HUNTERS<sup>®</sup>

HERE TO GET *you* THERE

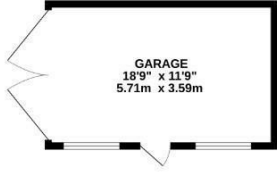
## Property Images



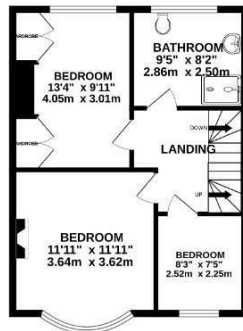
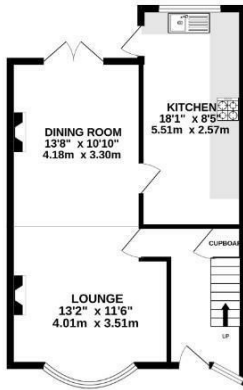
# HUNTERS®

HERE TO GET *you* THERE

GROUND FLOOR  
747 sq.ft. (69.4 sq.m.) approx.



1ST FLOOR  
463 sq.ft. (42.9 sq.m.) approx.



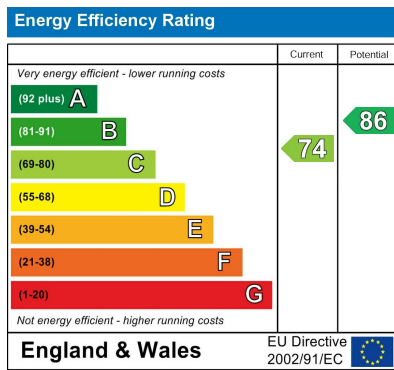
2ND FLOOR  
312 sq.ft. (29.0 sq.m.) approx.



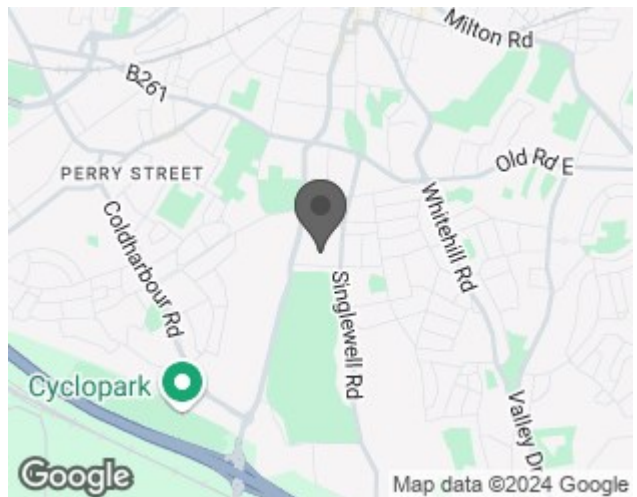
TOTAL FLOOR AREA: 1542 sq.ft. (143.2 sq.m.) approx.

Whilst every attempt has been made to ensure the accuracy of the floorplans contained herein, measurements of doors, windows, rooms and any other items are approximate and no responsibility is taken for any error, omission or mis-statement. This plan is for illustrative purposes only and should be used as such by any prospective purchaser. The services, systems and appliances shown have not been tested and no guarantee as to their operability or efficiency can be given.  
Made with Metropix ©2024

## EPC



## Map



## Details

Type: House Beds: 4 Bathrooms: 2 Receptions: 1 Tenure: Freehold

## Summary

GUIDE PRICE £450,000-£475,000.

Welcome to The Fairway, Gravesend - a stunning property that offers the perfect blend of comfort and style. This delightful house boasts four bedrooms spread over three floors, providing ample space for a growing family or those who love to entertain.

As you step inside the entrance hall, the hall way leads you to a Lounge/Dining room, complete with a charming log burner - perfect for cosy evenings in during the colder months. There is a well appointed Kitchen with breakfast bar & views of the south facing mature garden.

One of the highlights of this house is the fabulous loft conversion, which the current owner use as their primary bedroom with the added bonus of an ensuite.

Outside, the property boasts a driveway to the front and a garage to the rear, providing parking.

Don't miss out on the opportunity to make this house your home. With its spacious layout, charming features, and convenient location, The Fairway is a property that ticks all the boxes.

Contact us today to arrange a viewing.

## Features

- FOUR BEDROOMS • ENSUITE TO MAIN BEDROOM • KITCHEN • LOUNGE/DINING ROOM • WELL PRESENTED • GARAGE TO REAR • DRIVEWAY • EPC RATING- C