

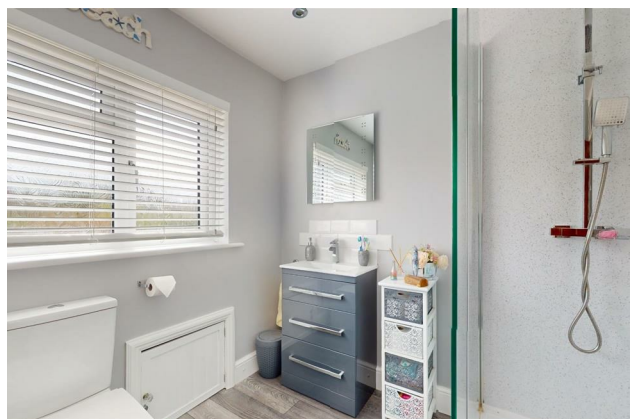
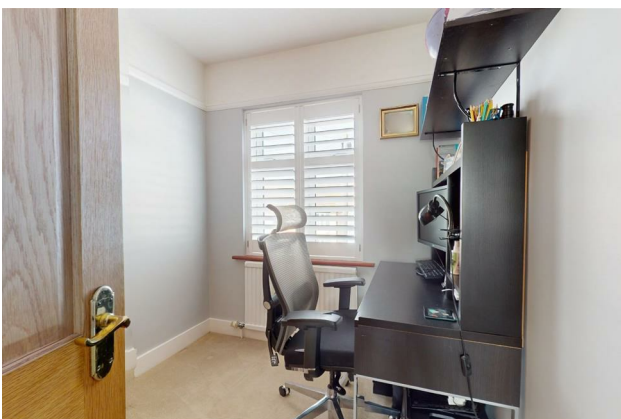
HUNTERS®

HERE TO GET *you* THERE

25 The Fairway, Gravesend, DA11 7LN

Offers In The Region Of £475,000

Property Images



HUNTERS®

HERE TO GET *you* THERE

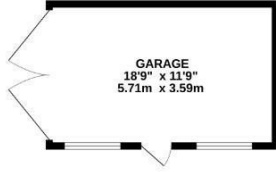
Property Images



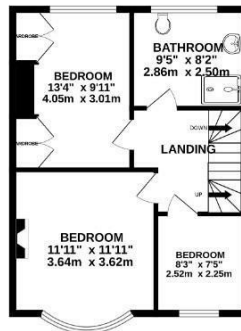
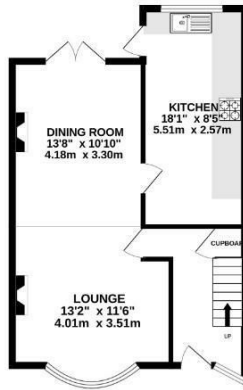
HUNTERS®

HERE TO GET *you* THERE

GROUND FLOOR
747 sq.ft. (69.4 sq.m.) approx.



1ST FLOOR
463 sq.ft. (42.9 sq.m.) approx.



2ND FLOOR
312 sq.ft. (29.0 sq.m.) approx.



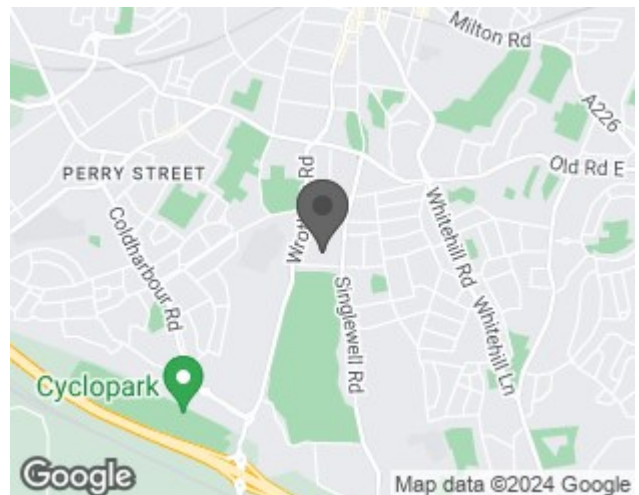
TOTAL FLOOR AREA: 1542 sq.ft. (143.2 sq.m.) approx.

Whilst every attempt has been made to ensure the accuracy of the floorplans contained herein, measurements of doors, windows, rooms and any other items are approximate and no responsibility is taken for any error, omission or mis-statement. This plan is for illustrative purposes only and should be used as such by any prospective purchaser. The services, systems and appliances shown have not been tested and no guarantee as to their operability or efficiency can be given.
Made with Metropix ©2024

EPC

Energy Efficiency Rating		Current	Potential
Very energy efficient - lower running costs			
(92 plus) A			74
(81-91) B			
(69-80) C			
(55-68) D			
(39-54) E			
(21-38) F			
(1-20) G			
Not energy efficient - higher running costs			
England & Wales	EU Directive 2002/91/EC		86

Map



Details

Type: House Beds: 4 Bathrooms: 2 Receptions: 1 Tenure: Freehold

Summary

Welcome to The Fairway, Gravesend - a stunning property that offers the perfect blend of comfort and style. This delightful house boasts four bedrooms spread over three floors, providing ample space for a growing family or those who love to entertain.

As you step inside the entrance hall, the hall way leads you to a Lounge/Dining room, complete with a charming log burner - perfect for cosy evenings in during the colder months. There is a well appointed Kitchen with breakfast bar & views of the south facing mature garden.

One of the highlights of this house is the fabulous loft conversion, which the current owner use as their primary bedroom with the added bonus of an ensuite.

Outside, the property boasts a driveway to the front and a garage to the rear, providing parking.

Don't miss out on the opportunity to make this house your home. With its spacious layout, charming features, and convenient location, The Fairway is a property that ticks all the boxes.

Contact us today to arrange a viewing.

Features

- FOUR BEDROOMS • ENSUITE TO MAIN BEDROOM • KITCHEN • LOUNGE/DINING ROOM • WELL PRESENTED • GARAGE TO REAR • DRIVEWAY • EPC RATING- C