

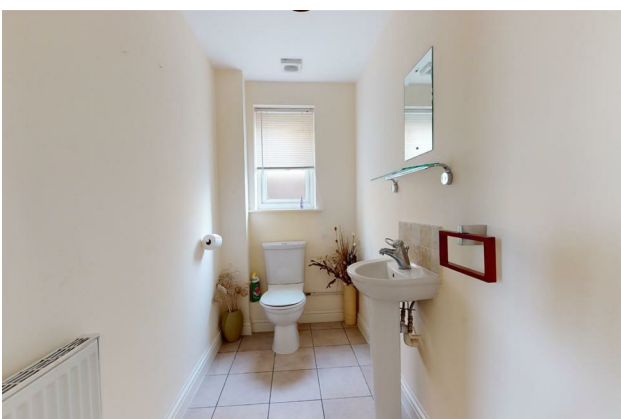
HUNTERS®

HERE TO GET *you* THERE

356a Wrotham Road, Gravesend, Kent, DA11 7PE

Offers In Excess Of £575,000

Property Images



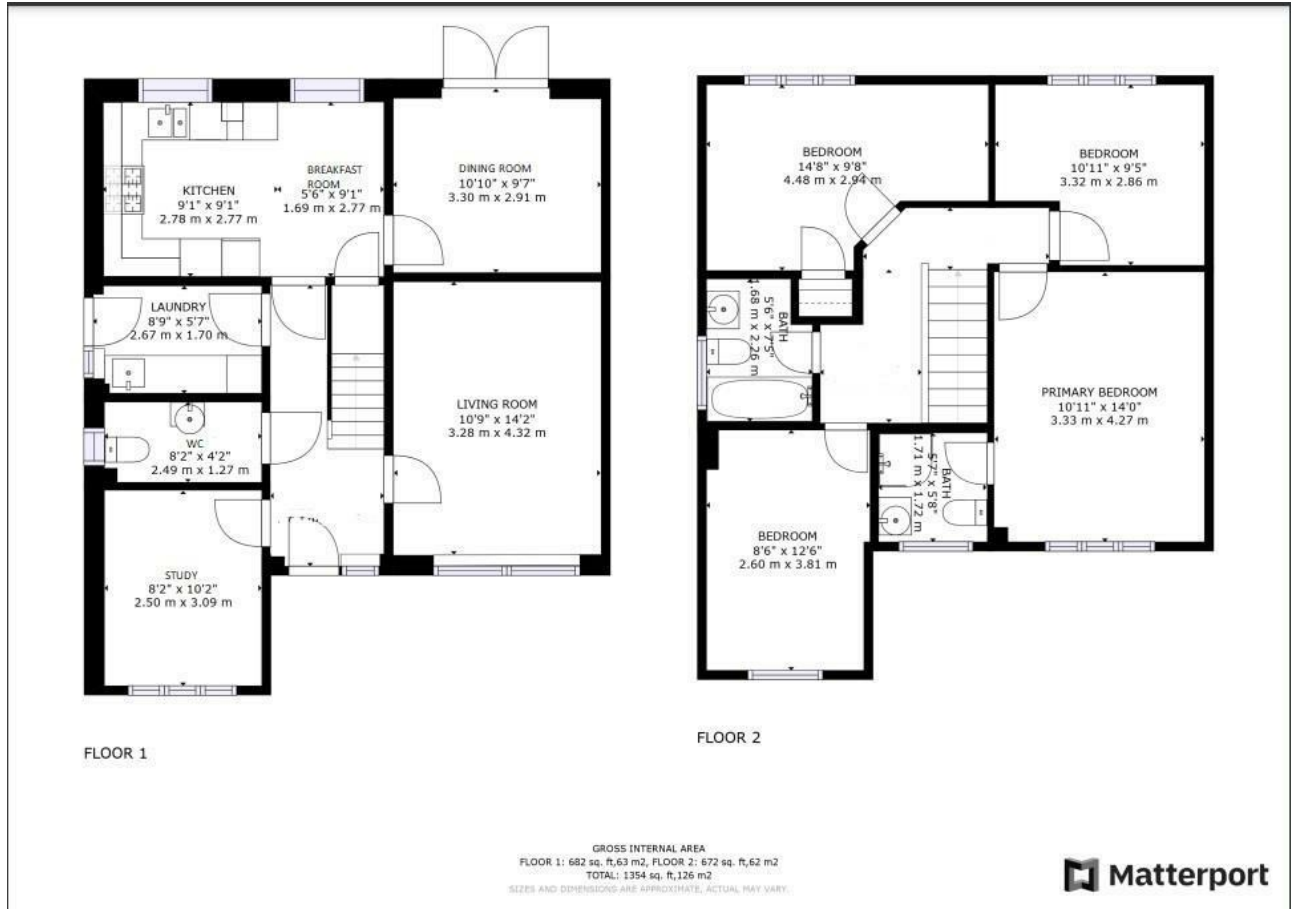
HUNTERS®

HERE TO GET *you* THERE

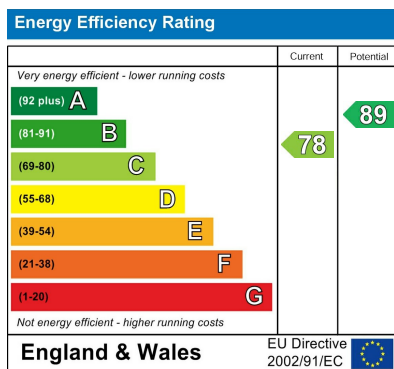
Property Images



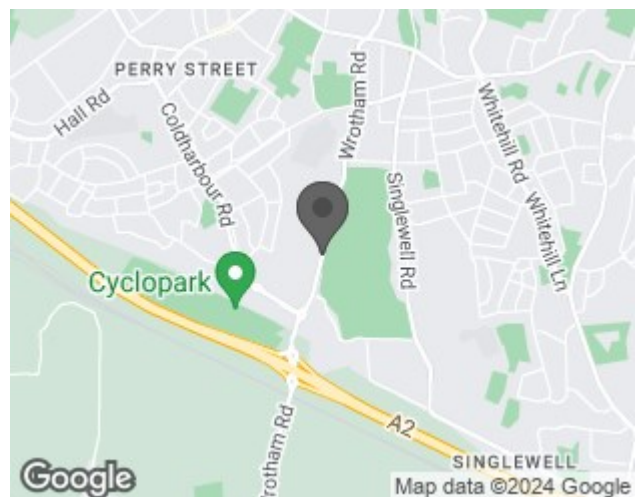
Floorplan



EPC



Map



Details

Type: House - Detached Beds: 4 Bathrooms: 2 Receptions: 3 Tenure: Freehold

Summary

Hunters Gravesend are delighted to offer for sale this detached home conveniently located, and offers No Forward Chain.

The ground floor accommodation comprises of door to entrance hall, stairs to first floor, doors to, lounge, dining room, study, kitchen/breakfast room, utility room and WC.

The first floor boasts four bedrooms with en-suite to main bedroom and family bathroom.

Externally the front has a driveway leading to the garage. The rear garden has a patio area, laid to lawn also backing onto the golf course.

Call now to arrange your immediate viewing!

Features

• DETACHED • FOUR BEDROOMS • LIVING ROOM • DINING ROOM • KITCHEN/BREAKFAST ROOM • ENSUITE TO PRIMARY BEDROOM • DRIVEWAY TO FRONT • GARAGE • NO FORWARD CHAIN • EPC RATING- C