

HUNTERS®

HERE TO GET *you* THERE

122 Marling Way, Gravesend, DA12 4RE

Guide Price £325,000-£350,000

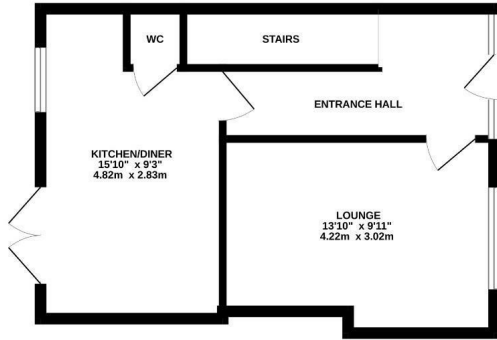
Property Images



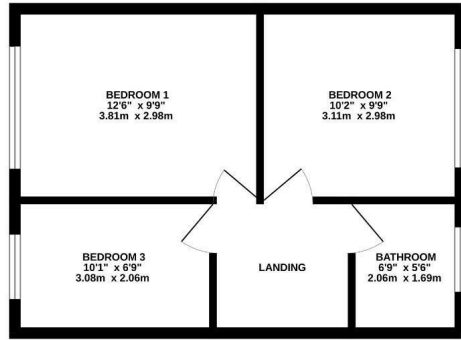
HUNTERS®

HERE TO GET *you* THERE

GROUND FLOOR
369 sq.ft. (34.3 sq.m.) approx.



1ST FLOOR
375 sq.ft. (34.9 sq.m.) approx.



122 MARLING WAY

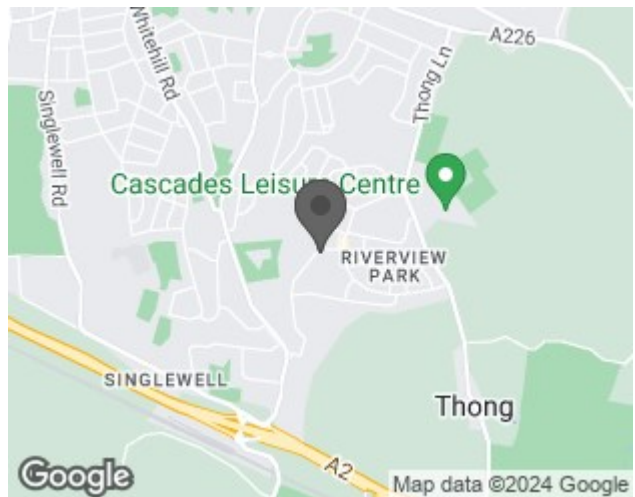
TOTAL FLOOR AREA : 744 sq.ft. (69.1 sq.m.) approx.

Whilst every attempt has been made to ensure the accuracy of the floorplan contained here, measurements of doors, windows, rooms and any other items are approximate and no responsibility is taken for any error, omission or mis-statement. This plan is for illustrative purposes only and should be used as such by any prospective purchaser. The services, systems and appliances shown have not been tested and no guarantee as to their operability or efficiency can be given.
Made with Metropix ©2024

EPC

Energy Efficiency Rating		Current	Potential
Very energy efficient - lower running costs			
(92 plus) A			86
(81-91) B			
(69-80) C		72	
(55-68) D			
(39-54) E			
(21-38) F			
(1-20) G			
Not energy efficient - higher running costs			
England & Wales		EU Directive 2002/91/EC	

Map



Details

Type: House - Mid Terrace Beds: 3 Bathrooms: 1 Receptions: 1 Tenure: Freehold

Summary

GUIDE PRICE £325,000-£350,000.

We are delighted to introduce this recently renovated three bedroom terraced home located on the popular Riverview Park Estate!

The accommodation comprises of entrance hall, separate lounge, kitchen/diner, WC and doors to the rear garden, whilst the first floor has three bedrooms and a family bathroom.

Externally, there is a front and rear garden as well as a garage.

Nearby you'll find local shops and Cascades Leisure Centre ideal for those looking to unwind.

This home benefits by having NO FORWARD CHAIN so if you're looking for something to move straight into call now to arrange a viewing and avoid missing out!

Features

- THREE BEDROOMS • LOUNGE • KITCHEN/DINER • BATHROOM • GARDEN • RECENTLY RENOVATED • IDEAL FIRST TIME PURCHASE • RIVERVIEW PARK LOCATION • NO FORWARD CHAIN • EPC RATING C