

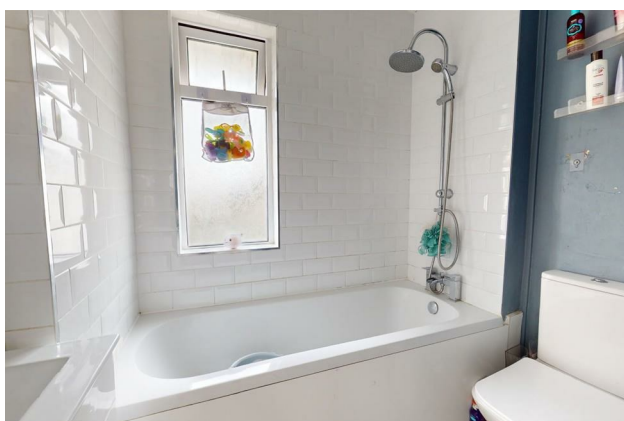
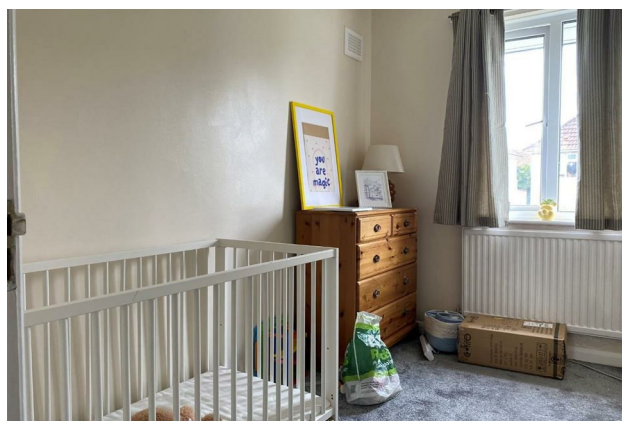
# HUNTERS®

HERE TO GET *you* THERE

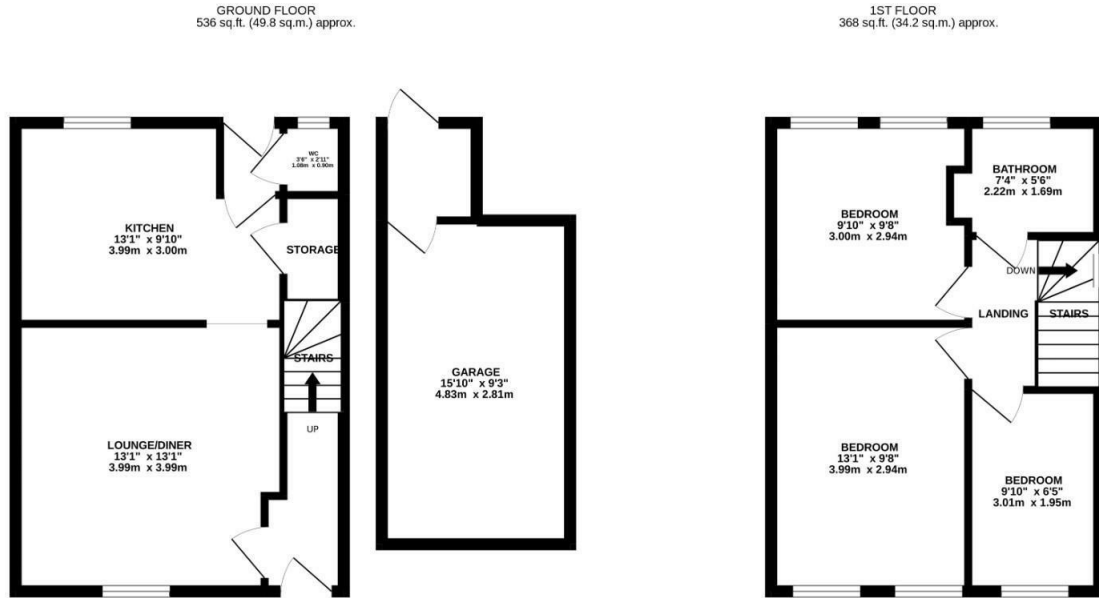
38 Hampton Crescent, Gravesend, Kent, DA12 4HY

Offers Over £315,000

Property Images



## Floorplan

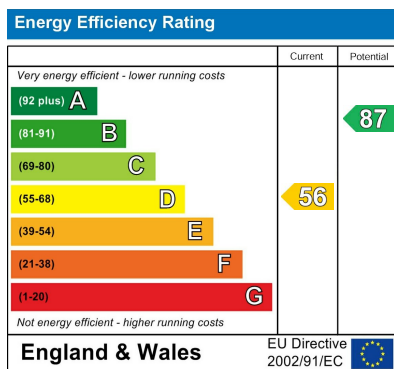


38 HAMPTON CRESCENT

TOTAL FLOOR AREA: 905 sq.ft. (84.1 sq.m.) approx.

Whilst every attempt has been made to ensure the accuracy of the floorplan contained here, measurements of doors, windows, rooms and any other items are approximate and no responsibility is taken for any error, omission or mis-statement. This plan is for illustrative purposes only and should be used as such by any prospective purchaser. The services, systems and appliances shown have not been tested and no guarantee as to their operability or efficiency can be given.  
Made with Metropix ©2022.

## EPC



## Map



## Details

Type: House - End Terrace Beds: 3 Bathrooms: 1 Receptions: 1 Tenure: Freehold

## Summary

Hunters Gravesend are pleased to offer for sale this three bedroom end of terrace family home presented in good decorative order.

The accommodation comprises of entrance hall, lounge/diner, kitchen and a downstairs WC.

The second floor has three bedrooms and a family bathroom.

There are gardens to the front and rear, with the added benefit of having a garage and driveway to the front.

Call us now to find out more or to arrange an appointment to view at your earliest convenience.

## Features

• THREE BEDROOMS • LOUNGE/DINER • KITCHEN • DOWNSTAIRS  
WC • GARAGE • DRIVEWAY • FRONT AND REAR GARDEN • FAMILY BATHROOM • EPC  
RATING- D