

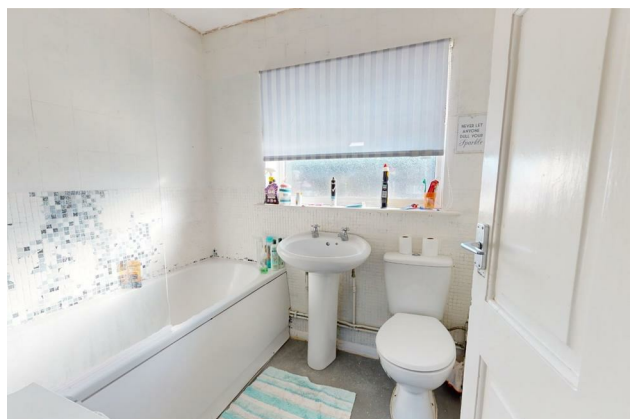
HUNTERS®

HERE TO GET *you* THERE

85 Whinfall Way, Gravesend, Kent, DA12 4RY

Guide Price £300,000

Property Images



HUNTERS[®]

HERE TO GET *you* THERE

Property Images



HUNTERS[®]

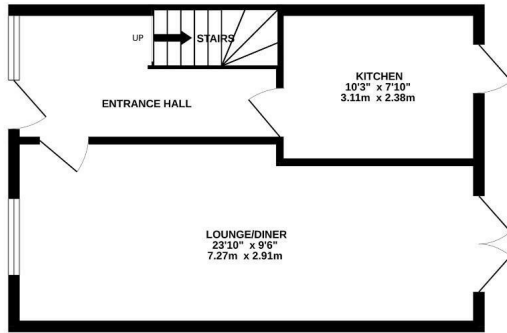
HERE TO GET *you* THERE

Property Images

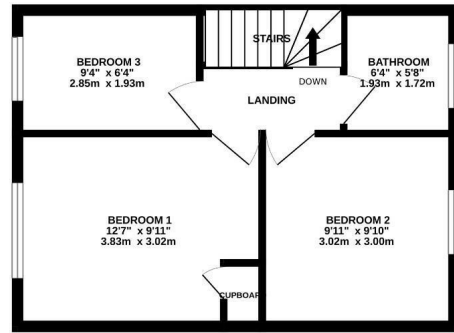
HUNTERS®

HERE TO GET *you* THERE

GROUND FLOOR
388 sq.ft. (36.0 sq.m.) approx.



1ST FLOOR
364 sq.ft. (33.8 sq.m.) approx.



85 WHINFELL WAY

TOTAL FLOOR AREA : 751 sq.ft. (69.8 sq.m.) approx.

Whilst every attempt has been made to ensure the accuracy of the floorplan contained here, measurements of doors, windows, rooms and any other items are approximate and no responsibility is taken for any error, omission or mis-statement. This plan is for illustrative purposes only and should be used as such by any prospective purchaser. The services, systems and appliances shown have not been tested and no guarantee as to their operability or efficiency can be given.
Made with Metropix ©2024

EPC

Energy Efficiency Rating		Current	Potential
<i>Very energy efficient - lower running costs</i>			
(92 plus) A			87
(81-91) B			
(69-80) C		71	
(55-68) D			
(39-54) E			
(21-38) F			
(1-20) G			
<i>Not energy efficient - higher running costs</i>			
England & Wales		EU Directive 2002/91/EC	

Map



Details

Type: House - Terraced Beds: 3 Bathrooms: 1 Receptions: 1 Tenure: Freehold

Summary

GUIDE PRICE £300,000-£325,000.

We are delighted to offer for sale this mid terraced home situated on the sought after Riverview Park Estate offering local shops and within close proximity to Cascades Leisure Centre!

The accommodation comprises of entrance hall, lounge/diner and kitchen.

Whilst the first floor boast two double bedrooms, a good size single bedroom and family bathroom.

Externally, there is a front and rear garden as well as a garage.

This property also comes with the bonus of having NO FORWARD CHAIN so call now to avoid missing out!

Features

- THREE BEDROOMS • LOUNGE/DINER • KITCHEN • NO FORWARD CHAIN • FRONT AND REAR GARDEN • RIVERVIEW PARK LOCATION • CLOSE TO LOCAL SHOPS • BATHROOM • GARAGE • EPC RATING C