

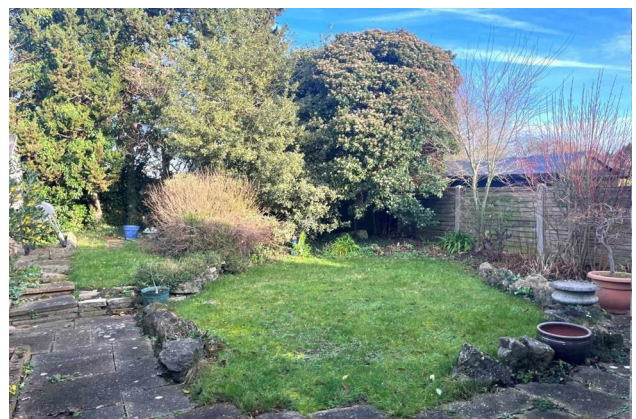
HUNTERS®

HERE TO GET *you* THERE

11 Worcester Close, Istead Rise, Gravesend, Kent, DA13 9LB

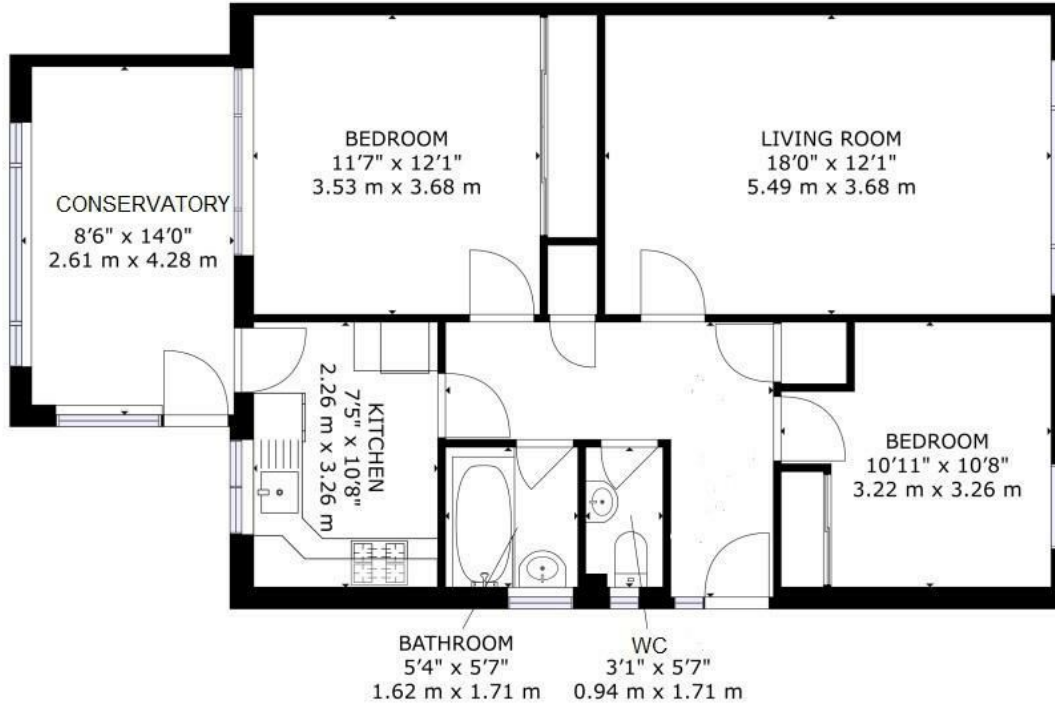
Offers In The Region Of £415,000

Property Images



HUNTERS®

HERE TO GET *you* THERE

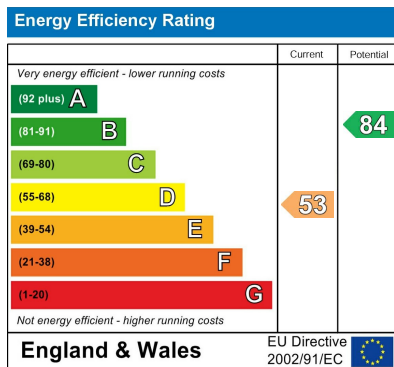


FLOOR 1

GROSS INTERNAL AREA
TOTAL: 893 sq.ft, 83 m²
SIZES AND DIMENSIONS ARE APPROXIMATE, ACTUAL MAY VARY.



EPC



Map



Details

Type: Bungalow - Detached Beds: 2 Bathrooms: 1 Receptions: 1 Tenure: Freehold

Summary

Hunters Gravesend are now bringing to the market this two bedroom, detached bungalow in the popular location of Istead Rise offering NO FORWARD CHAIN.

The accommodation comprises of entrance hall, leading to the lounge/dining room, two bedrooms, bathroom with separate WC, kitchen and conservatory.

Externally, there is ample parking to the front due to a large driveway as well as the bonus of a garage which could be used for storage.

To the rear is a garden which provides grassed areas and paved walkway that leads to a storage shed.

Istead Rise is a small village located just outside of Gravesend with a real community feel. There are an array of local shops, there are bus stops allowing links to Gravesend as well as out towards Meopham where you can access trains stations.

Call now to find out more!

Features

- TWO BEDROOMS • DETACHED • LIVING ROOM • CONSERVATORY • DRIVEWAY FOR AMPLE PARKING • GARAGE • NO FORWARD CHAIN • EPC RATING- E