

# HUNTERS®

HERE TO GET *you* THERE

**Griffin Court, Flat 100 Black Eagle Drive, Northfleet, Gravesend, Kent, DA11 9AJ**

**Asking Price £210,000**

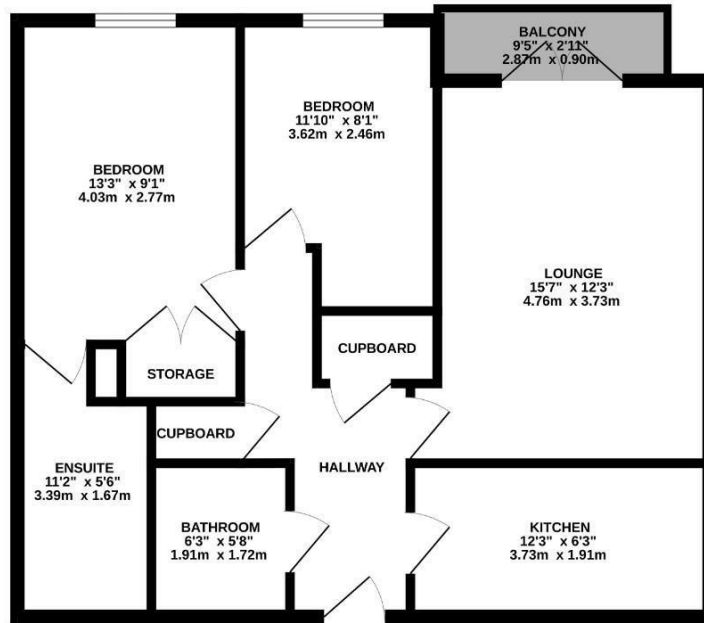
Property Images



# HUNTERS®

HERE TO GET *you* THERE

GROUND FLOOR  
662 sq.ft. (61.5 sq.m.) approx.



TOTAL FLOOR AREA: 662 sq.ft. (61.5 sq.m.) approx.  
While every attempt has been made to ensure the accuracy of the floorplan contained here, measurements of doors, windows, rooms and any other items are approximate and no responsibility is taken for any error, omission or mis-statement. This plan is for illustrative purposes only and should be used as such for any prospective purchase. The services, systems and appliances shown have not been tested and no guarantee as to their operability or efficiency can be given.  
Made with iMoenig 02023

## EPC

Energy Efficiency Rating		
	Current	Potential
Very energy efficient - lower running costs		
(92 plus) <b>A</b>		
(81-91) <b>B</b>	<b>83</b>	<b>83</b>
(69-80) <b>C</b>		
(55-68) <b>D</b>		
(39-54) <b>E</b>		
(21-38) <b>F</b>		
(1-20) <b>G</b>		
Not energy efficient - higher running costs		
<b>England &amp; Wales</b>	EU Directive 2002/91/EC	

## Map



## Details

Type: Flat Beds: 2 Bathrooms: 2 Receptions: 1 Tenure: Leasehold

## Summary

Hunters Gravesend are delighted to offer for sale this modern two-bedroom apartment presented in good order with No Forward Chain and located in the sought-after area of Northfleet, and within easy access to Ebbsfleet International Railway Station and Bluewater Shopping Centre.

The apartment consists of, hallway, lounge with a balcony, two bedrooms, one with an en-suite shower room, additional bathroom and storage cupboards.

One of the other benefits is the allocated parking space behind electric gates.

Please call now to arrange an immediate viewing.

## Features

- TWO BEDROOMS • LOUNGE/DINER • KITCHEN • BATHROOM • EN SUITE TO MAIN BEDROOM • ALLOCATED PARKING SPACE • CLOSE TO EBBSFLEET INTERNATIONAL RAILWAY STATION • EPC RATING B