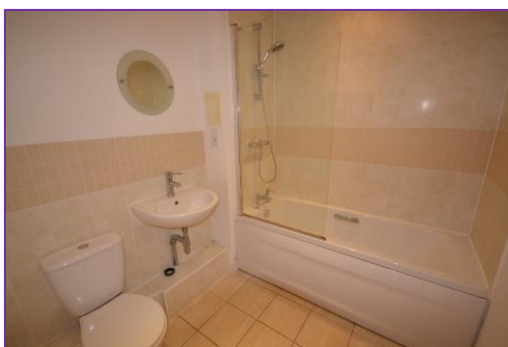




- STUNNING ONE BEDROOM MODERN APARTMENT
- PICTURESQUE LOCATION
- AVAILABLE DECEMBER
- EASY ACCESS OF M20
- PARKING FOR ONE CAR
- CLOSE TO TOWN



7 Sandling Park, Sandling Lane
Maidstone, ME14 2NY

Monthly Rental Of
£995.00

A first floor one bedroom modern apartment situated within easy access of the town centre, train station, M20 & M2 and set in several acres of landscaped parkland. The property features lounge, double bedroom with built in wardrobe, fully fitted kitchen with fridge/freezer, washer/dryer, oven/hob & dishwasher. There is also modern electric heating, double glazing, off road parking and entry phone system. £25pcm water rates

Available December

Unfurnished

No Pets or Smokers

