



23 Barton Avenue , , Blackpool, FY1 6AP

Price: £175,000

%æpcGraph_c_1_400%

- 11 Bedroom Bed and Breakfast
- Fully Refurbished to a High Standard Throughout
- 12 Bathrooms
- Disabled Access
- 2 Car Parking Spaces
- Electronic Room Doors
- CCTV
- Fully Furnished

To view all of our properties visit www.tigerestates.co.uk

23 Barton Avenue, Blackpool

HALLWAY

Porcelain tiled floor. Spotlights. Gas central heating radiator. Fire alarm.

101

33' 5" x 12' 4" (10.2m x 3.77m)

Two radiators. Laminate floor. En-suite wet room.

GUEST WC

WC. Hand basin. Extractor fan.

DINING ROOM

19' 6" x 11' 1" (5.95m x 3.39m)

Two double glazed windows. Central heating radiator. Porcelain tiled floor.

UTILITY ROOM

Plumbed for washing machine.

KITCHEN

12' 9" x 10' 10" (3.9m x 3.31m)

Fitted wall and base units. Built in oven, hob and extractor hood. Plumbed for dishwasher. Twin stainless steel sink unit.

BASEMENT

Currently a large storage area with potential for 3 rooms.

FIRST FLOOR STAIRS AND LANDING

Central heating radiator. CCTV.

201

17' 1" x 14' 10" (5.22m x 4.53m)

Central heating radiator. Double glazed bay window. Double glazed window. Laminate floor. En suite shower room.

202

17' 4" x 11' 0" (5.29m x 3.37m)

Central heating radiator. Double glazed window. Laminate floor. En-suite shower room.

203

11' 0" x 8' 2" (3.37m x 2.49m)

Central heating radiator. Double glazed window. Laminate floor. En-suite shower room.

204

11' 10" x 10' 10" (3.61m x 3.32m)

Central heating radiator. Double glazed window. Laminate floor. En-suite shower room.

SECOND FLOOR STAIRS AND LANDING

CCTV.

301

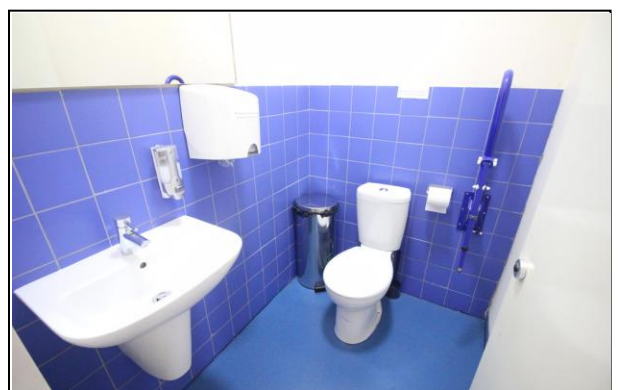
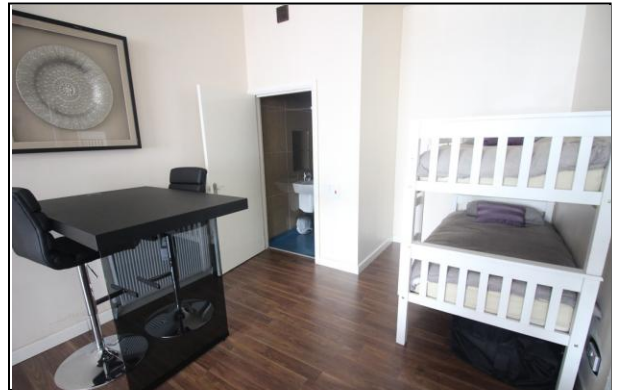
17' 1" x 14' 10" (5.22m x 4.53m)

Double glazed window. Central heating radiator. Laminate floor. En-suite shower room.

302

17' 4" x 11' 0" (5.29m x 3.37m)

Central heating radiator. Double glazed window. Laminate floor.



23 Barton Avenue, Blackpool

Ensuite shower room.

303

11' 0" x 8' 2" (3.37m x 2.49m)

Central heating radiator. Double glazed window. Laminate floor. En-suite shower room.

304

11' 10" x 10' 10" (3.61m x 3.32m)

Double glazed window. Central heating radiator. Laminate floor. En-suite shower room.

THIRD FLOOR STAIRS AND LANDING

CCTV.

401

16' 9" x 12' 1" (5.12m x 3.69m)

Two double glazed windows. En-suite shower room.

402

11' 2" x 11' 1" (3.41m x 3.40m)

Central heating radiator. Double glazed window. En-suite shower room.

GENERAL POINTS OF INTEREST AS PROVIDED BY VENDOR

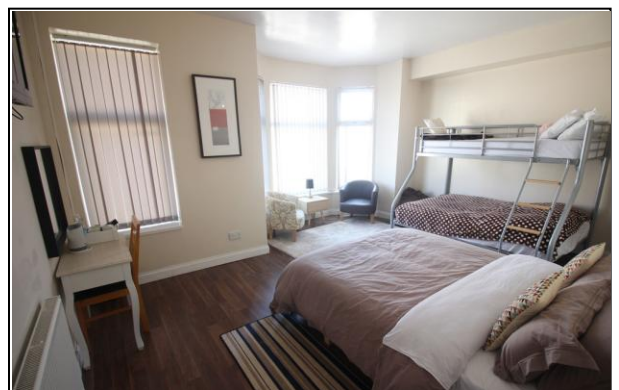
APPROXIMATE AGE OF THE PROPERTY 1910

TENURE

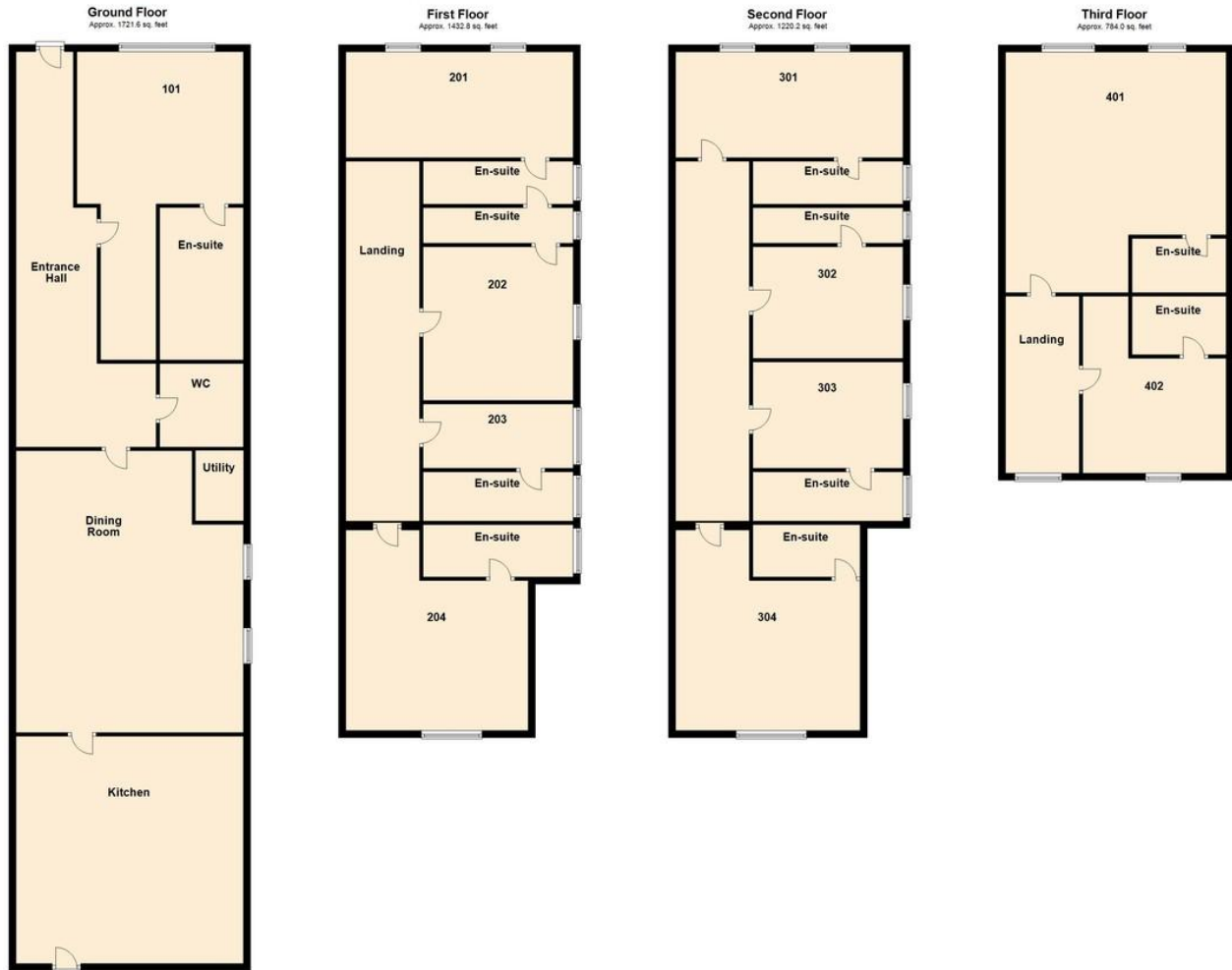
The property is **Freehold**

PLEASE NOTE

These particulars are believed to be correct but in no way is their accuracy guaranteed and they do not form part of any contract and neither do Tiger Sales & Lettings or the vendors accept any responsibility in respect of these particulars and any prospective purchaser must satisfy themselves by inspection or otherwise as to their accuracy. All measurements are approximate and for illustrative purposes only. Floor Plans are included as a service to our customers and is intended as a GUIDE TO LAYOUT ONLY. Digital images are reproduced for general information only and must not be inferred that any item shown is included for sale with the property. We have been unable to confirm if services / items in the property are in full working order. The property is offered for sale on this basis. Prospective purchasers are advised to seek expert advice where appropriate. We are only verbally informed by the vendor of the stated tenure details, therefore we advise any prospective purchaser to confirm the tenure details with their solicitor / legal representative.



23 Barton Avenue, , Blackpool



23 Barton Avenue, Blackpool