



14 Helens Close , , Blackpool, FY4 3QE

Price: £147,000

%epcGraph_c_1_400%

- Gas central heating
- Double glazing
- Large living room
- Kitchen/Dining room
- Conservatory
- Attractive shower room
- Sought after residential location
- Schools nearby

To view all of our properties visit www.tigerestates.co.uk

14 Helens Close , , Blackpool

FULL DESCRIPTION

This excellent and well located three bedroom semi detached house offers entrance hallway, lounge, open plan kitchen/dining room, conservatory, three bedrooms and a shower room. To the exterior are good sized and well stocked gardens with driveway and large garage. Some cosmetic improvement required hence the attractive asking price. NO CHAIN!

ENTRANCE VESTIBULE

Double glazed french doors.

ENTRANCE HALL

Double glazed windows. Central heating radiator. Built in under the stairs storage cupboard.

LOUNGE

Double glazed window. Central heating radiator. Fireplace. Sliding doors to dining room.

KITCHEN/DINING ROOM

Fitted wall and base units. Two double glazed windows and door. central heating radiator. One and a half bowl sink unit and mixer tap.

CONSERVATORY

Double glazed.

STAIRS AND LANDING

Double glazed window.

BEDROOM 1

Fitted wardrobes. Double glazed window. Central heating radiator.

BEDROOM 2

Fitted wardrobes. Double glazed window. Central heating radiator.

BEDROOM 3

Double glazed window. Central heating radiator.

SHOWER ROOM

Shower cubicle. WC. Pedestal hand basin. Double glazed window. Fully tiled. Central heating radiator.

GARDENS

To front.

Driveway to side.

Large rear garden with well stocked borders.

GARAGE

GENERAL POINTS OF INTEREST AS PROVIDED BY VENDOR

APPROXIMATE AGE OF THE PROPERTY

TENURE



14 Helens Close, , Blackpool

The property is **Freehold**

COUNCIL TAX Band "C"

The average council tax charges for April 2010 - March 2013 are listed below, based on a household of two adults. The tax bands are based on the value of your property in 1991.

Valuation Band	Council Tax 2017/18	Council Tax 2018/19	Council Tax 2019/20
A	£1104.47	£1170.70	£1218.16
B	£1288.54	£1365.82	£1421.19
C	£1472.62	£1560.93	£1624.21
D	£1656.70	£1756.05	£1827.24
E	£2024.86	£2146.28	£2233.29
F	£2393.01	£2536.52	£2639.35
G	£2761.17	£2926.75	£3045.40
H	£3313.40	£3512.10	£3654.48

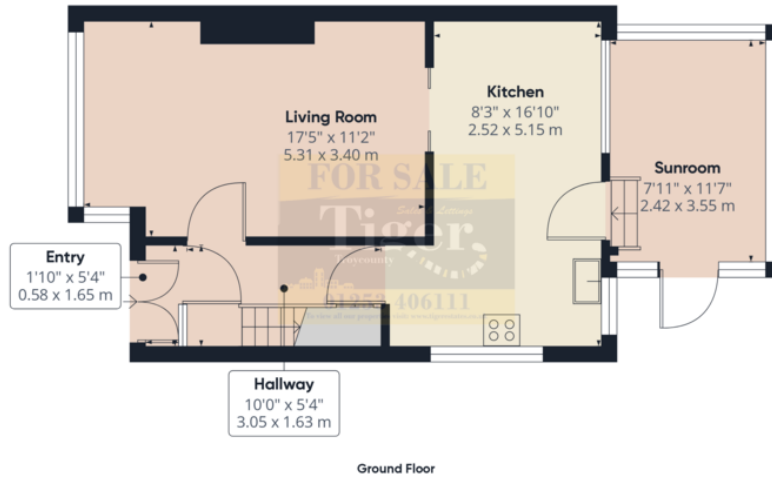
PLEASE NOTE

These particulars are believed to be correct but in no way is their accuracy guaranteed and they do not form part of any contract and neither do Tiger Sales & Lettings or the vendors accept any responsibility in respect of these particulars and any prospective purchaser must satisfy themselves by inspection or otherwise as to their accuracy. All measurements are approximate and for illustrative purposes only. Floor Plans are included as a service to our customers and is intended as a GUIDE TO LAYOUT ONLY. Digital images are reproduced for general information only and must not be inferred that any item shown is included for sale with the property. We have been unable to confirm if services / items in the property are in full working order. The property is offered for sale on this basis. Prospective purchasers are advised to seek expert advice where appropriate. We are only verbally informed by the vendor of the stated tenure details, therefore we advise any prospective purchaser to confirm the tenure details with their solicitor / legal representative.

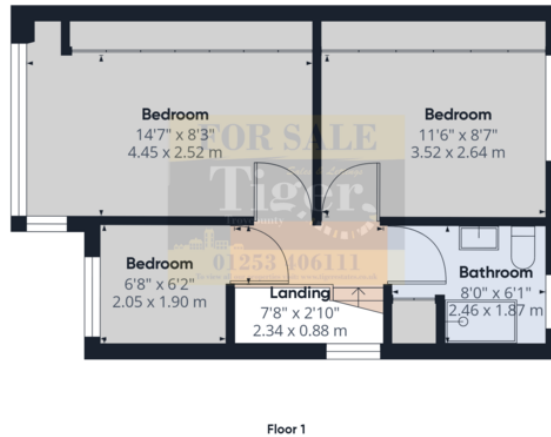
14/11/2024



14 Helens Close, , Blackpool



Approximate total area¹⁾
885.44 ft²
82.26 m²



(1) Excluding balconies and terraces

While every attempt has been made to ensure accuracy, all measurements are approximate, not to scale. This floor plan is for illustrative purposes only.

Calculations are based on RICS IPMS 3C standard.

GIRAFFE 360