



2 Kepscaith Road
Whitburn EH47 8JD
Offers Over £TBC

Caesar & Howie
Solicitors & Estate Agents



2 Kepscaith Road

EH47 8JD

Early viewing is essential of this immaculate and superbly finished detached bungalow, set on a large prime plot and surrounding attractive gardens. All rooms are well proportioned and fittings and finishes are to a high standard. Feature rooms include large modern open plan kitchen diner, spacious family lounge with solid oak flooring and fireplace. The property enjoys a high level of privacy and a driveway that will accommodate several cars. The location has easy access to schools, amenities, town centre and swift access to M8 junction 4. Flexible entry available.

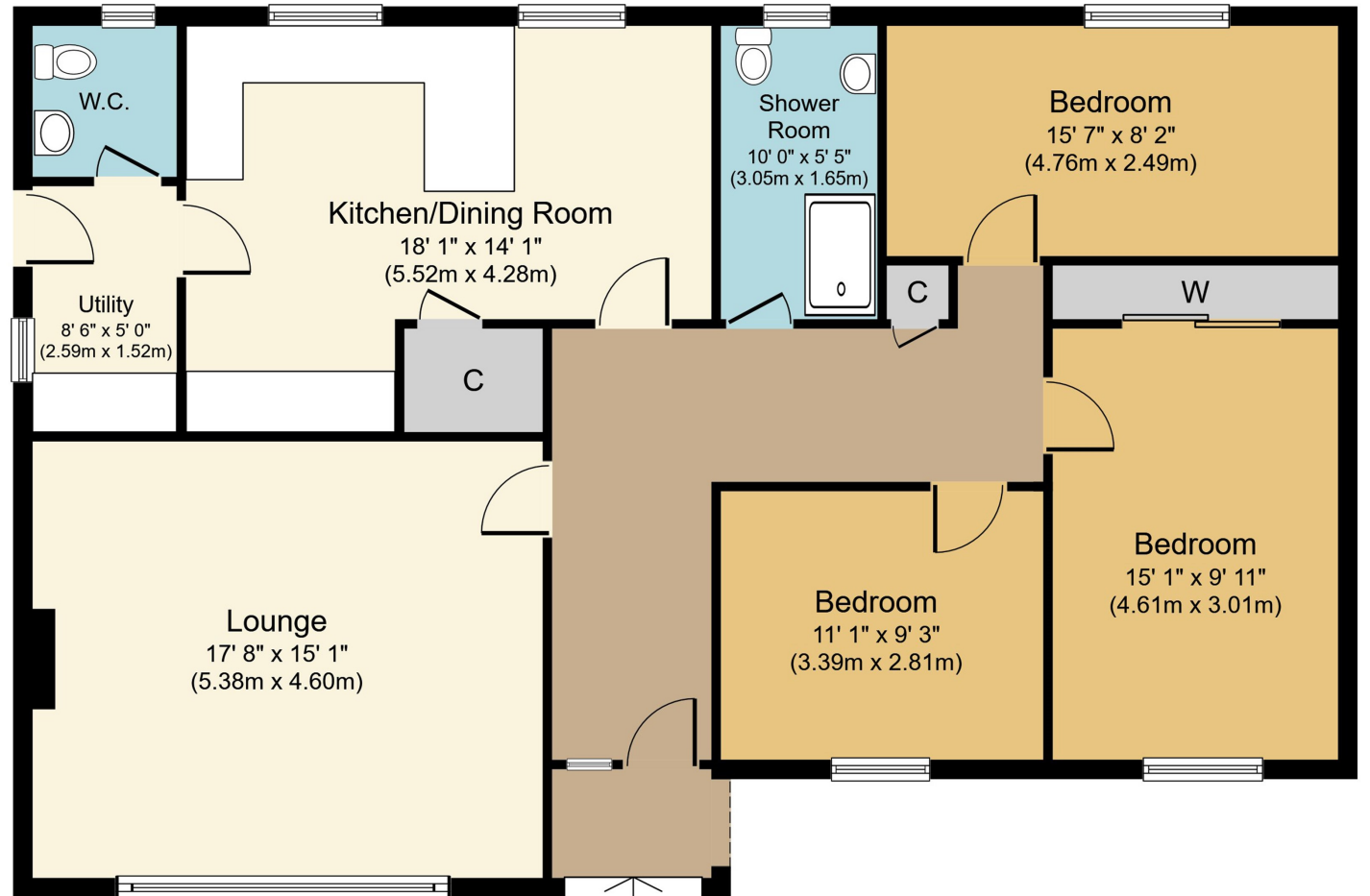
- **L shaped entrance hall**
- **Spacious lounge/overlooks gardens**
- **Large open plan modern kitchen/diner**
- **Utility room & W.C.**
- **Three double bedrooms**
- **Modern well appointed shower room**
- **Gas Central Heating**
- **Fully double glazed**
- **Garage/drive/gardens**
- **Council Tax Band E**

Viewings: Strictly by appointment through Caesar & Howie on 01506 435306 or email kma@caesar-howie.co.uk



2 Kepscaith Road

2 Kepscaith Road



Whilst every attempt has been made to ensure the accuracy of the floor plan contained here, measurements of doors, windows, rooms and any other items are approximate and no responsibility is taken for any error, omission, or mis-statement. The measurements should not be relied upon for valuation, transaction and/or funding purposes. This plan is for illustrative purposes only and should be used as such by any prospective purchaser or tenant. The services, systems and appliances shown have not been tested and no guarantee as to their operability or efficiency can be given.

Copyright V360 Ltd 2024 | www.houseviz.com