



8 Church Court Apartments

Alloa FK10 1DH

Offers Over £80,000

CHURCH COURT

**Caesar & Howie**  
*Solicitors & Estate Agents*



## 8 Church Court Apartments

Church Street, Alloa, FK10 1DH

An excellent home which will suit a variety of buyers is offered from this well presented two bedroom upper flat. The property boasts a bright and inviting lounge, modern kitchen, fully tiled bathroom, plentiful storage throughout and further benefits from ample on street parking nearby. It is ideally located within a sought after locale which is within easy reach of all local amenities, shopping, schooling at all levels, and excellent road and rail links to both Edinburgh and Glasgow make it ideal for the commuter. Early viewing is highly recommended to fully appreciate this property and it's position. Early/flexible entry is available with no onward buying chain.

- **Entrance stair & hallway**
- **Spacious lounge**
- **Modern kitchen**
- **Two bedrooms**
- **Bathroom**
- **DG, electric heating & ample storage**
- **On street parking**
- **Council Tax Band: C**
- **Energy Efficiency Rating: D**

Extras: All floor coverings, blinds and light fittings.

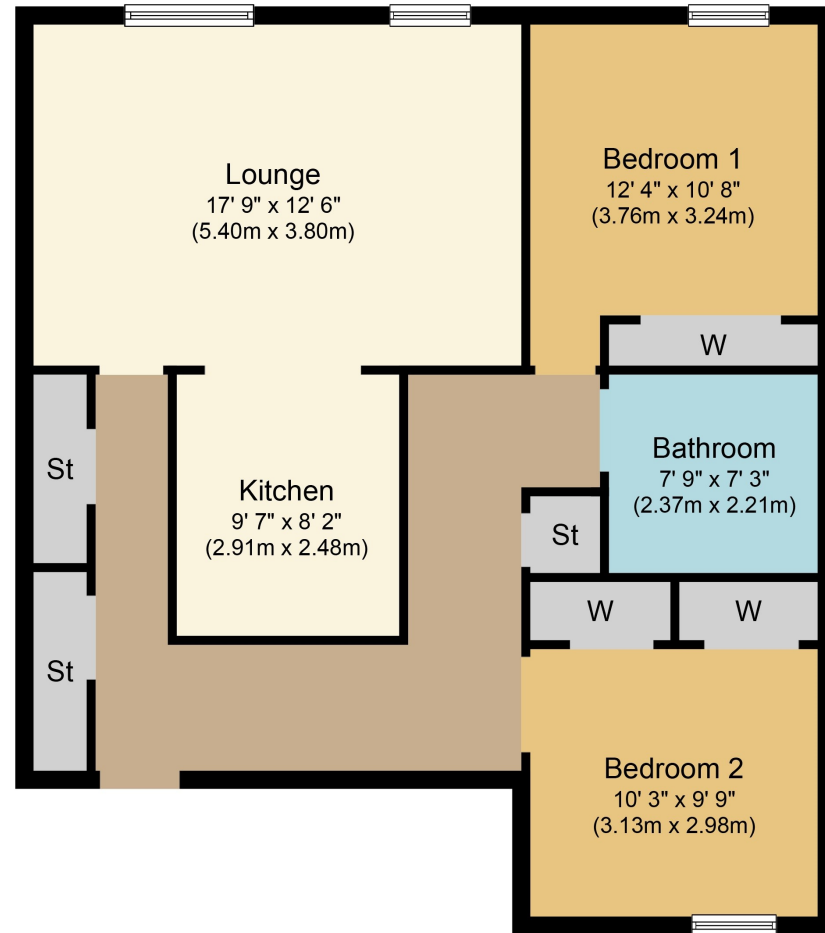
Viewings: Strictly by appointment through Caesar & Howie on 01506 435306 or email [prop@caesar-howie.co.uk](mailto:prop@caesar-howie.co.uk)





8 Church Court Apartments

## 8 Church Court Apartments



Whilst every attempt has been made to ensure the accuracy of the floor plan contained here, measurements of doors, windows, rooms and any other items are approximate and no responsibility is taken for any error, omission, or mis-statement. The measurements should not be relied upon for valuation, transaction and/or funding purposes. This plan is for illustrative purposes only and should be used as such by any prospective purchaser or tenant. The services, systems and appliances shown have not been tested and no guarantee as to their operability or efficiency can be given.

Copyright V360 Ltd 2024 | [www.houseviz.com](http://www.houseviz.com)