

South Riding

Bricket Wood, AL2 3NE



South Riding

Bricket Wood, AL2 3NE

Offers In The Region Of
£595,000

- DETACHED CHALET BUNGALOW
 - THREE / FOUR BEDROOMS
 - THREE RECEPTION ROOMS
 - BATHROOM
 - ANNEX POTENTIAL
- BEAUTIFUL LANDSCAPED GARDEN
- AMPLE OFF-STREET PARKING
- PLANNING PERMISSION
- CHAIN FREE

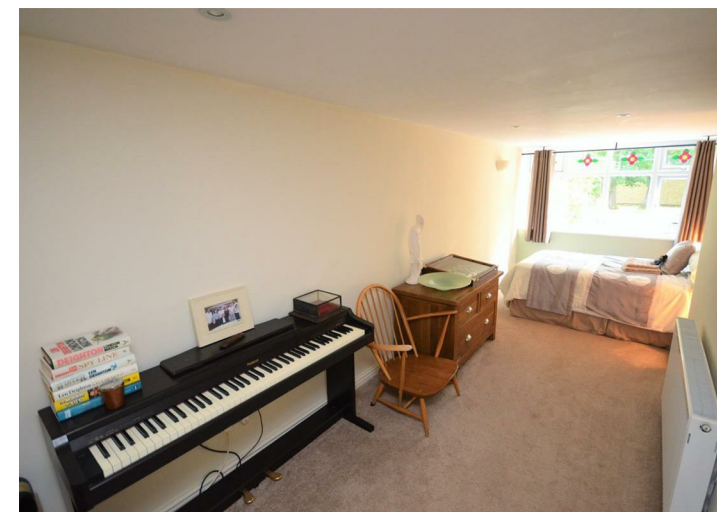




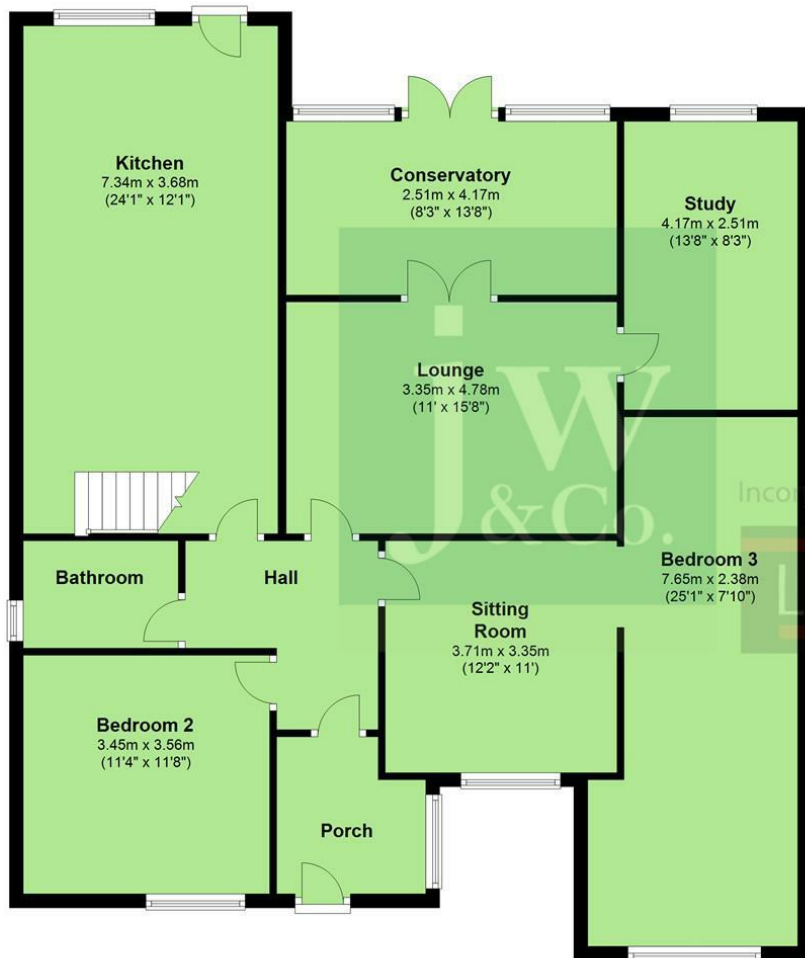
South Riding

Bricket Wood, AL2 3NE

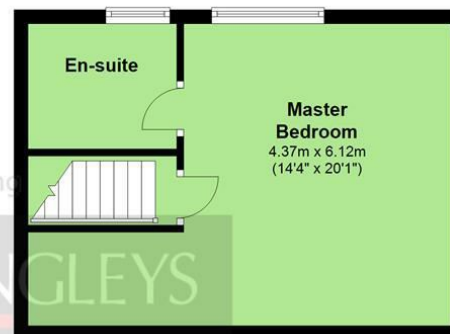
A superbly presented and well extended THREE/FOUR bedroom DETACHED chalet style bungalow, situated in the heart of the highly desirable village of Bricket Wood and just a short walk of the local shopping parade. The property boasts versatile accommodation, which could facilitate an annex with its own lounge, bedroom and potential for another bathroom, ample OFF STREET PARKING, NO CHAIN.



Ground Floor



First Floor



ENTRANCE PORCH:

ENTRANCE HALL:

BEDROOM TWO:
11'8" x 11'3" (3.56m x 3.45m)

BATHROOM:

SITTING ROOM:
12'2" x 10'11" (3.71m x 3.35m)

BEDROOM THREE:
25'1" x 7'8" (7.65m x 2.36m)

LOUNGE:
15'8" x 10'11" (4.78m x 3.35m)

STUDY:
13'8" x 8'2" (4.17m x 2.51m)

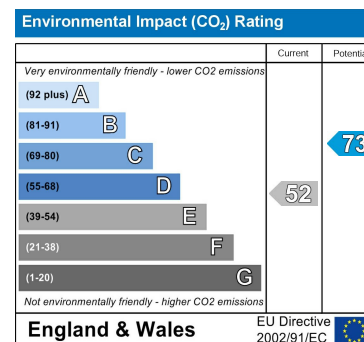
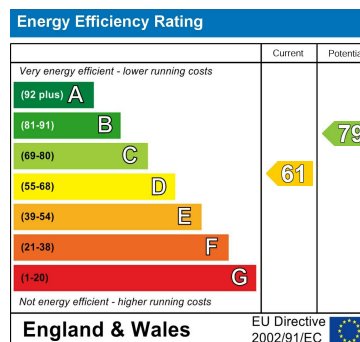
CONSERVATORY:
14'4" x 7'4" (4.37m x 2.26m)

KITCHEN / DINING ROOM:
24'0" max x 12'0" (7.34m max x 3.68m)

BEDROOM ONE:
14'4" x 14'0" extending to 20'0" (4.37m x 4.27m extending to 6.12m)

EN-SUITE SHOWER ROOM:

18 South Riding, Bricket Wood



JW&Co Park Street
6 How Wood, St Albans, Herts, AL2 2RA
01727 875555
parkstreet@jwandco.co.uk