



GUIDE PRICE

£310,000

Gloucester Street

Winchcombe GL54 5NA



## THE PROPERTY

An extended and surprisingly spacious Cotswold stone cottage with a great deal of character and a lovely private rear garden.

Available with no onward chain, this Grade II Listed cottage is full of original features and has a sitting room with exposed beams and fireplace, an adjoining snug/study area, an impressive dining kitchen with vaulted ceiling, a ground floor shower/cloakroom, two comfortable first floor bedrooms and an upstairs bathroom.

There is a useful pedestrian access via a private gate to the rear of the cottage.

2



2



2



## SITUATION

Winchcombe is an ancient Saxon town, beautifully situated on the famous Cotswold Way, just 7 miles north-east of Cheltenham. This location offers excellent connectivity (approx. 2hrs to London Paddington by train from Cheltenham), with Broadway 8 miles and Gloucester 16 miles away.

Nestled within the Cotswolds National Landscape (formerly the AONB), the town features many listed properties. The thriving community provides an excellent range of amenities, including independent shops, supermarkets, pubs, restaurants, doctors/dental surgeries, and a library, plus a primary and a secondary school.

A stone's throw from the town centre lies the magnificent Sudeley Castle, a historic Tudor jewel and the final resting place of Queen Katherine Parr. Residents and visitors alike enjoy its ten award-winning gardens, including the stunning Queens' Garden, and a year-round calendar of prestigious events ranging from the magical 'Spectacle of Light' in winter to summer outdoor theatre and artisan festivals.

The town's cultural and recreational life is further enhanced by the Isbourne Arts Centre, a vibrant venue for music, drama, and community events; and the Winchcombe Park, which offers a Multi-Use Games Area (MUGA), a skate park, an outdoor gym, and picnic areas, strengthening the local community spirit.

## ADDITIONAL INFORMATION

Mains gas, drainage, water and electricity are connected. Gas central heating and hot water.

Broadband connection and Mobile coverage: Fibre to the property broadband is available to be connected. Mobile signal available - see: [checker.ofcom.org.uk](https://checker.ofcom.org.uk)















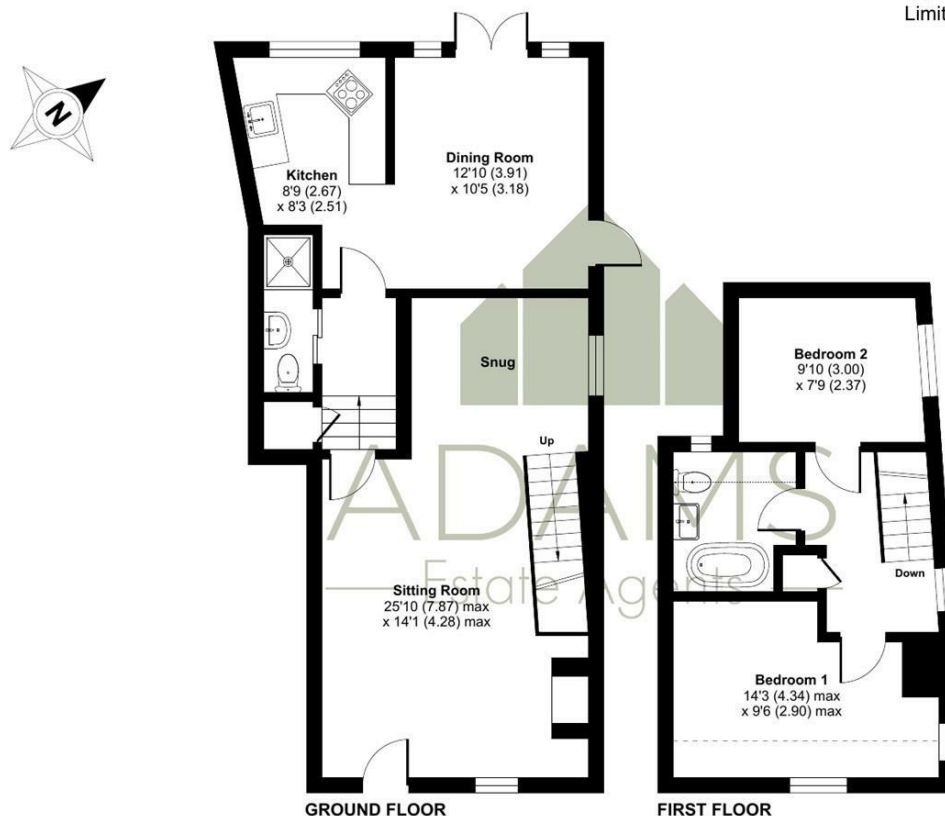
## Gloucester Street, Winchcombe, Cheltenham, GL54

Approximate Area = 918 sq ft / 85.2 sq m

Limited Use Area(s) = 41 sq ft / 3.8 sq m

Total = 959 sq ft / 89 sq m

For identification only - Not to scale



### TENURE

Freehold

### LOCAL AUTHORITY

Tewkesbury Borough Council

### COUNCIL TAX BAND

D

### VIEWINGS

By prior appointment only

Agents Note: Whilst every care has been taken to prepare these particulars, they are for guidance purposes only. All measurements are approximate and are for general guidance purposes only and whilst every care has been taken to ensure their accuracy, they should not be relied upon and potential buyers/tenants are advised to recheck the measurements

Floor plan produced in accordance with RICS Property Measurement 2nd Edition, Incorporating International Property Measurement Standards (IPMS2 Residential). © nrichcom 2025. Produced for Adams Estate Agents Limited. REF: 1309240



### OFFICE ADDRESS

Hereford House, 20 North  
Street, Winchcombe,  
Cheltenham, Gloucestershire,  
GL54 5PS

### OFFICE DETAILS

01242 603601  
sales@adamsestateagents.com  
www.adamsestateagents.com