



GUIDE PRICE

£525,000

The Hyde

Winchcombe GL54 5QR

## THE PROPERTY

\*Sold (stc) by Adams\*

A 2005-built detached bungalow on a corner plot with driveway parking, a garage and mature private gardens to front and rear.

Situated on the desirable development of The Hyde on the southern side of Winchcombe, this spacious modern property features a sitting room with fireplace and bay window, a generous dual aspect kitchen and dining room, a separate utility room, a principal bedroom with ensuite shower room, two further bedrooms and a bathroom.

Available with no onward chain.

3



2



1



## SITUATION

Winchcombe is an ancient Saxon town situated on the famous Cotswold Way about 7 miles north-east of Cheltenham (2hrs to London Paddington by train), 8 miles from Broadway and 16 miles from Gloucester. Many of the houses are listed as being of architectural interest and part of the town lies within the Cotswolds Area of Outstanding Natural Beauty. The thriving local community offers an excellent range of amenities including independent shops, supermarkets, several pubs and restaurants, dental and doctors surgeries, a library, an 'Outstanding' primary school, a secondary school and numerous clubs and societies.

## ADDITIONAL INFORMATION

Mains gas, drainage, water and electricity are connected. Gas central heating and hot water. Broadband connection and Mobile coverage: Fibre to the property broadband is available to be connected. Mobile signal available - see: [checker.ofcom.org.uk](http://checker.ofcom.org.uk)









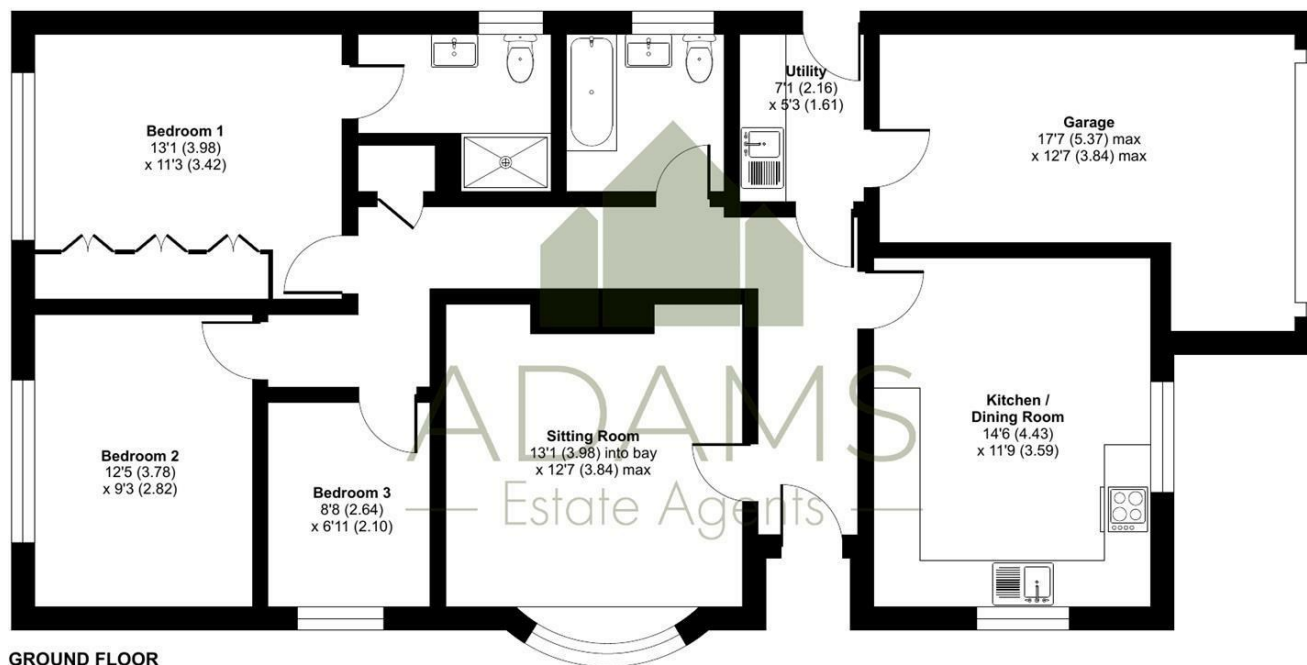
## The Hyde, Winchcombe, Cheltenham, GL54

Approximate Area = 1026 sq ft / 95.3 sq m

Garage = 175 sq ft / 16.2 sq m

Total = 1201 sq ft / 111.5 sq m

For identification only - Not to scale



GROUND FLOOR

### TENURE

Freehold

### LOCAL AUTHORITY

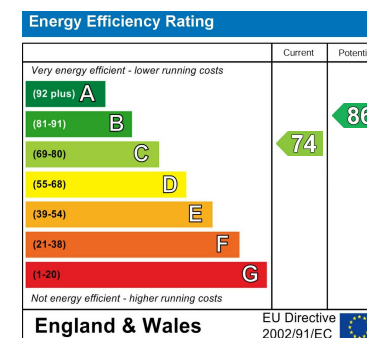
Tewkesbury Borough Council

### COUNCIL TAX BAND

D

### VIEWINGS

By prior appointment only



Agents Note: Whilst every care has been taken to prepare these particulars, they are for guidance purposes only. All measurements are approximate and are for general guidance purposes only and whilst every care has been taken to ensure their accuracy, they should not be relied upon and potential buyers/tenants are advised to recheck the measurements

Floor plan produced in accordance with RICS Property Measurement 2nd Edition, Incorporating International Property Measurement Standards (IPMS2 Residential). © nichecom 2025. Produced for Adams Estate Agents Limited. REF: 1273475



### OFFICE ADDRESS

Hereford House, 20 North  
Street, Winchcombe,  
Cheltenham, Gloucestershire,  
GL54 5PS

### OFFICE DETAILS

01242 603601  
sales@adamsestateagents.com  
www.adamsestateagents.com