

GUIDE PRICE

£299,950

Castle Street

Winchcombe GL54 5JA



## THE PROPERTY

**\*Sold (stc) by Adams\*** A Grade II listed two bedroom period Cotswold stone cottage in a superb position on the edge of Winchcombe, available with no onward chain.

With character features and a private rear garden, the property would benefit from refurbishment throughout and includes a sitting room with woodburner and exposed beams, a kitchen, a small utility/boot room, a ground floor bathroom and two first floor bedrooms.

The private rear garden has a brick and stone outbuilding that needs renovating.

2



1



1



### SITUATION

Winchcombe is an ancient Saxon town, beautifully situated on the famous Cotswold Way, just 7 miles north-east of Cheltenham. This location offers excellent connectivity (approx. 2hrs to London Paddington by train from Cheltenham), with Broadway 8 miles and Gloucester 16 miles away.

Nestled within the Cotswolds National Landscape (formerly the AONB), the town features many listed properties. The thriving community provides an excellent range of amenities, including independent shops, supermarkets, pubs, restaurants, doctors/dental surgeries, and a library, plus a primary and a secondary school.

A stone's throw from the town centre lies the magnificent Sudeley Castle, a historic Tudor jewel and the final resting place of Queen Katherine Parr. Residents and visitors alike enjoy its ten award-winning gardens, including the stunning Queens' Garden, and a year-round calendar of prestigious events ranging from the magical 'Spectacle of Light' in winter to summer outdoor theatre and artisan festivals.

The town's cultural and recreational life is further enhanced by the Isbourne Arts Centre, a vibrant venue for music, drama, and community events; and the Winchcombe Park, which offers a Multi-Use Games Area (MUGA), a skate park, an outdoor gym, and picnic areas, strengthening the local community spirit.

### ADDITIONAL INFORMATION

Mains gas, drainage, water and electricity are connected. Gas central heating and hot water via combi boiler.

Broadband connection and Mobile coverage: Fibre to the property broadband is available to be connected. Mobile signal available - see: [checker.ofcom.org.uk](http://checker.ofcom.org.uk)

Creeping Freehold: The bathroom of the neighbouring property extends over some of the sitting room of this property.







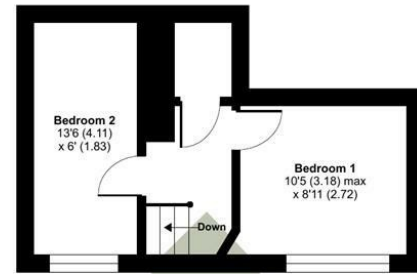




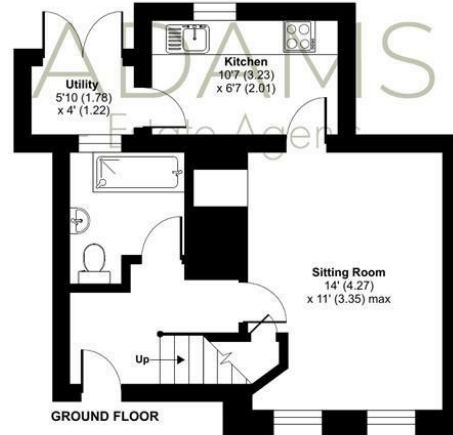
**Sudeley Mill Cottages, Castle Street, Winchcombe,  
Cheltenham, GL54**

Approximate Area = 667 sq ft / 61.9 sq m

For identification only - Not to scale



FIRST FLOOR



GROUND FLOOR



Floor plan produced in accordance with RICS Property Measurement Standards incorporating International Property Measurement Standards (IPMS2 Residential). ©richcom 2024.  
Produced for Adams Estate Agents Limited. REF: 1154628

**TENURE**

Freehold

**LOCAL AUTHORITY**


Tewkesbury Borough Council

**COUNCIL TAX BAND**

C

**VIEWINGS**

By prior appointment only

Energy Efficiency Rating		
	Current	Potential
Very energy efficient - lower running costs		
(92 plus) <b>A</b>		<b>88</b>
(81-91) <b>B</b>		
(69-80) <b>C</b>		
(55-68) <b>D</b>		
(39-54) <b>E</b>	<b>50</b>	
(21-38) <b>F</b>		
(1-20) <b>G</b>		
Not energy efficient - higher running costs		
England & Wales		EU Directive 2002/91/EC 

Agents Note: Whilst every care has been taken to prepare these particulars, they are for guidance purposes only. All measurements are approximate and are for general guidance purposes only and whilst every care has been taken to ensure their accuracy, they should not be relied upon and potential buyers/tenants are advised to recheck the measurements



**OFFICE ADDRESS**

Hereford House, 20 North  
Street, Winchcombe,  
Cheltenham, Gloucestershire,  
GL54 5PS

**OFFICE DETAILS**

01242 603601  
sales@adamsestateagents.com  
www.adamsestateagents.com