



GUIDE PRICE
£279,950
Vineyard Street
Winchcombe GL54 5LP

PROPERTY SUMMARY

Situated on one of Winchcombe's most photogenic streets and centrally located for all of the town's amenities, a two double bedroom Cotswold stone cottage available with no onward chain.

On the ground floor is an open plan living room with exposed timbers, a kitchen and dining area and a modern bathroom and on the first floor are two spacious and light double bedrooms, both with built-in cupboards.

2



1



1



ADDITIONAL INFORMATION

Mains gas, drainage, water and electricity are connected. Gas central heating and hot water via combi boiler.

Broadband connection and Mobile coverage: Fibre to the cabinet broadband is available to be connected. Mobile signal available - see: checker.ofcom.org.uk

SITUATION

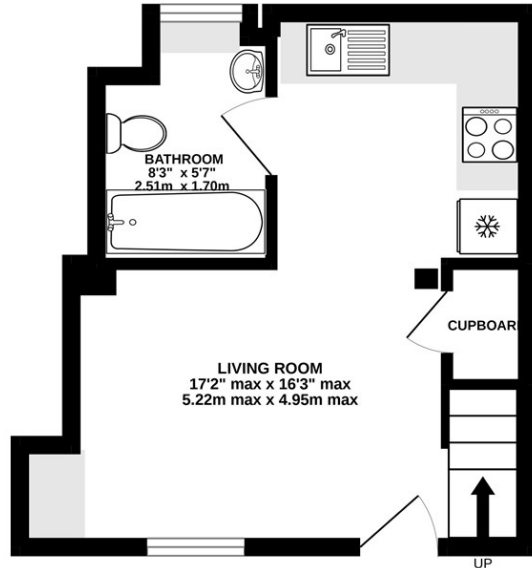
Winchcombe is an ancient Saxon town situated on the famous Cotswold Way about 7 miles north-east of Cheltenham (2hrs to London Paddington by train), 8 miles from Broadway and 16 miles from Gloucester. Many of the houses are listed as being of architectural interest and part of the town lies within the Cotswolds Area of Outstanding Natural Beauty. The thriving local community offers an excellent range of amenities including independent shops, supermarkets, several pubs and restaurants, dental and doctors surgeries, a library, an 'Outstanding' primary school, a secondary school and numerous clubs and societies.



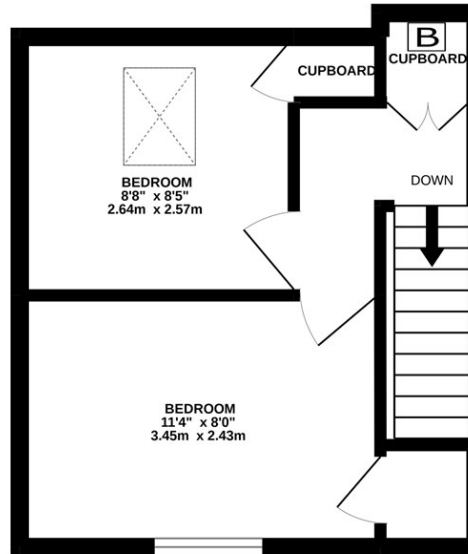




GROUND FLOOR
243 sq.ft. (22.6 sq.m.) approx.



1ST FLOOR
241 sq.ft. (22.4 sq.m.) approx.



TOTAL FLOOR AREA : 485 sq.ft. (45.0 sq.m.) approx.

Whilst every attempt has been made to ensure the accuracy of the floorplan contained here, measurements of doors, windows, rooms and any other items are approximate and no responsibility is taken for any error, omission or mis-statement. This plan is for illustrative purposes only and should be used as such by any prospective purchaser. The services, systems and appliances shown have not been tested and no guarantee as to their operability or efficiency can be given.
Made with Metropix ©2022

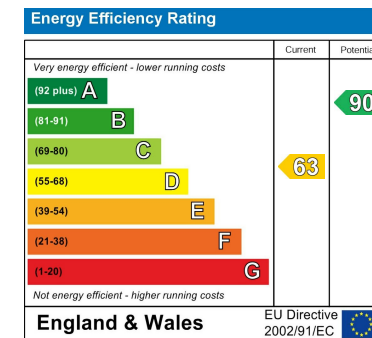


LOCAL AUTHORITY
Tewkesbury Borough Council

TENURE
Freehold

COUNCIL TAX BAND
C

VIEWINGS
By prior appointment only



Agents Note: Whilst every care has been taken to prepare these particulars, they are for guidance purposes only. All measurements are approximate and are for general guidance purposes only and whilst every care has been taken to ensure their accuracy, they should not be relied upon and potential buyers/tenants are advised to recheck the measurements



OFFICE ADDRESS

Hereford House, 20 North Street,
Winchcombe, Cheltenham,
Gloucestershire, GL54 5PS

OFFICE DETAILS

01242 603601
sales@adamsestateagents.com
www.adamsestateagents.com