



GUIDE PRICE

£299,950

Gloucester Street

Winchcombe, GL54 5LZ

PROPERTY SUMMARY

Available with no onward chain, a recently refurbished three bedroom terraced house, set back from the historic Gloucester Street, near the heart of the Cotswold town of Winchcombe.

Features of the property include a new rewire and smoke detectors, new carpeting and hard flooring and a full redecoration. Additionally there is a spacious 20ft (6m) sitting room, a kitchen/breakfast room with pantry, a utility/boot room to the rear, three well proportioned bedrooms, a bathroom and a separate W.C.

There is a generous garden to the rear with pedestrian access.

3



1



1



SITUATION

Winchcombe is an ancient Saxon town situated on the famous Cotswold Way about 7 miles north-east of Cheltenham (2hrs to London Paddington by train), 8 miles from Broadway and 16 miles from Gloucester. Many of the houses are listed as being of architectural interest and part of the town lies within the Cotswolds Area of Outstanding Natural Beauty. The thriving local community offers an excellent range of amenities including independent shops, supermarkets, several pubs and restaurants, dental and doctors surgeries, a library, an 'Outstanding' primary school, a secondary school and numerous clubs and societies.

ADDITIONAL INFORMATION

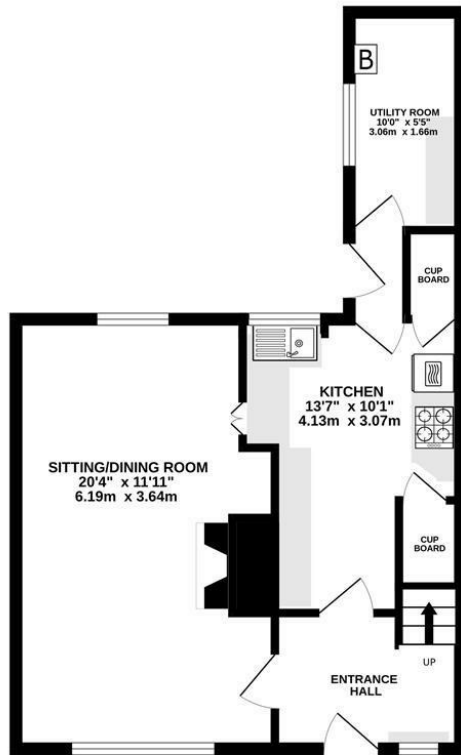
Mains gas, drainage, water and electricity are connected. Gas central heating and hot water via combi boiler.

Broadband connection and Mobile coverage: Fibre to the cabinet broadband is available to be connected. Mobile signal available - see: checker.ofcom.org.uk

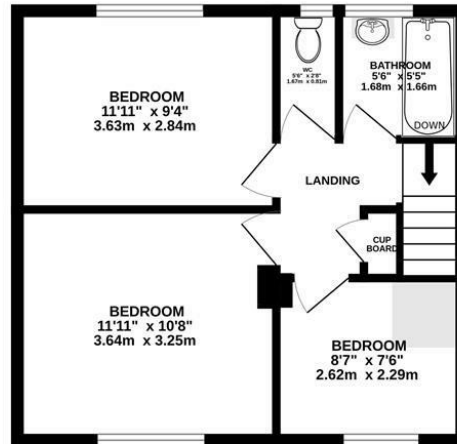




GROUND FLOOR
466 sq.ft. (43.3 sq.m.) approx.



1ST FLOOR
405 sq.ft. (37.7 sq.m.) approx.



TOTAL FLOOR AREA : 872 sq.ft. (81.0 sq.m.) approx.

Whilst every attempt has been made to ensure the accuracy of the floorplan contained here, measurements of doors, windows, rooms and any other items are approximate and no responsibility is taken for any error, omission or mis-statement. This plan is for illustrative purposes only and should be used as such by any prospective purchaser. The services, systems and appliances shown have not been tested and no guarantee as to their operability or efficiency can be given.
Made with Metropix ©2023



LOCAL AUTHORITY
Tewkesbury Borough Council

COUNCIL TAX BAND
C

VIEWINGS
By prior appointment only

Energy Efficiency Rating		Current	Potential
Very energy efficient - lower running costs			
(92 plus) A			87
(81-91) B		73	
(69-80) C			
(55-68) D			
(39-54) E			
(21-38) F			
(1-20) G			
Not energy efficient - higher running costs			
England & Wales		EU Directive 2002/91/EC	

Agents Note: Whilst every care has been taken to prepare these particulars, they are for guidance purposes only. All measurements are approximate and are for general guidance purposes only and whilst every care has been taken to ensure their accuracy, they should not be relied upon and potential buyers/tenants are advised to recheck the measurements



OFFICE ADDRESS

Hereford House, 20 North Street,
Winchcombe, Cheltenham,
Gloucestershire, GL54 5PS

OFFICE DETAILS

01242 603601
enquiries@adamsestateagents.cc
www.adamsestateagents.com