

4. Bois Field Terrace - Offers Over £300,000

Halstead CO9 2DF

scott maddison

Estate & Letting Agents



"Consistently providing outstanding service to our clients"

Offers Over £300,000

The Property

Nestled in the charming area of Bois Field Terrace, Halstead, this delightful pre-1900 house offers a unique blend of character and modern living. Tastefully updated by the current vendors. Spanning an impressive 882 square feet, the property features two inviting reception rooms, fully fitted kitchen perfect for entertaining guests or enjoying quiet evenings at home.

The house boasts two well-proportioned bedrooms, providing ample space for relaxation and rest. The bathroom is conveniently located, ensuring comfort and practicality for daily routines.

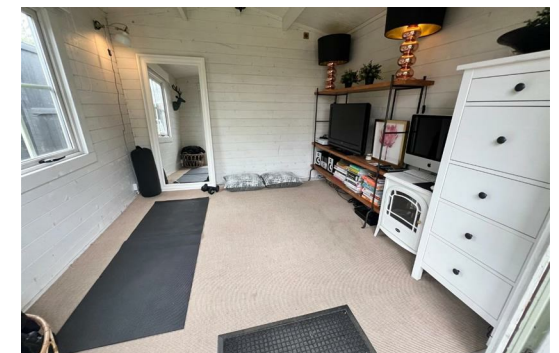
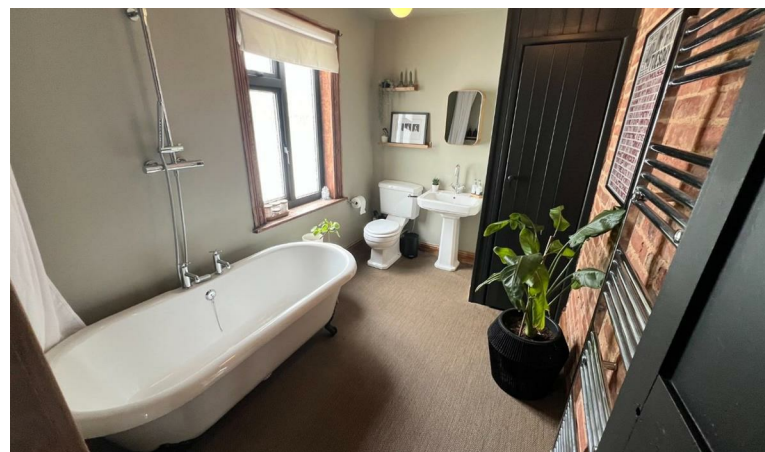
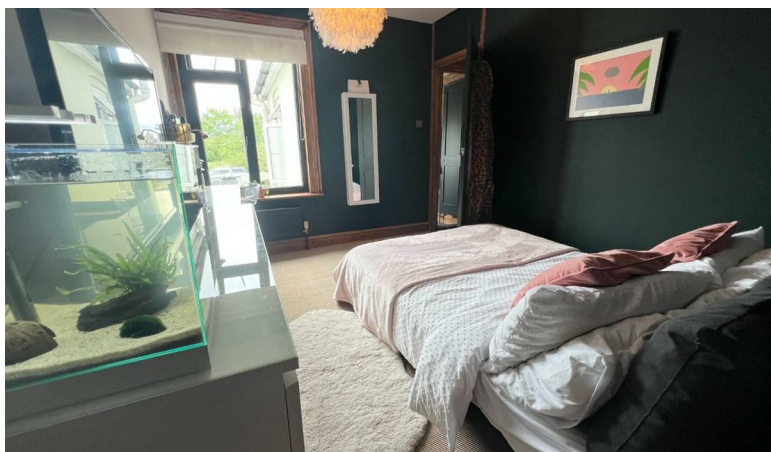
With its historical charm, this property has retained many original features while offering the potential for personalisation to suit your taste. The exterior is complemented by a parking space for one vehicle, adding to the convenience of this lovely home.

Whether you are a first-time buyer or looking to downsize, this house in Halstead presents an excellent opportunity to own a piece of history in a desirable location. Don't miss the chance to make this charming property your own.

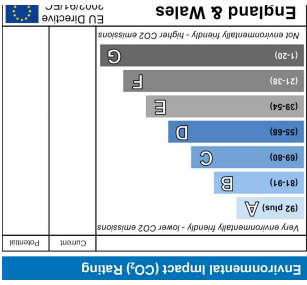
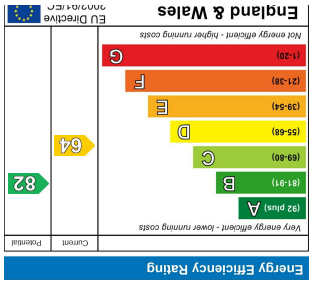
Features

- TWO RECEPTION ROOMS
- FITTED KITCHEN
- GAS RADIATOR CENTRAL HEATING
- UPVC DOUBLE GLAZING
- TASTEFULLY RESTORED
- FAMILY BATHROOM SUITE
- 90' SOUTH FACING REAR GARDEN
- OFF ROAD PARKING FOR ONE CAR
- CLOSE WALK TO TOWN
- SUMMER HOUSE



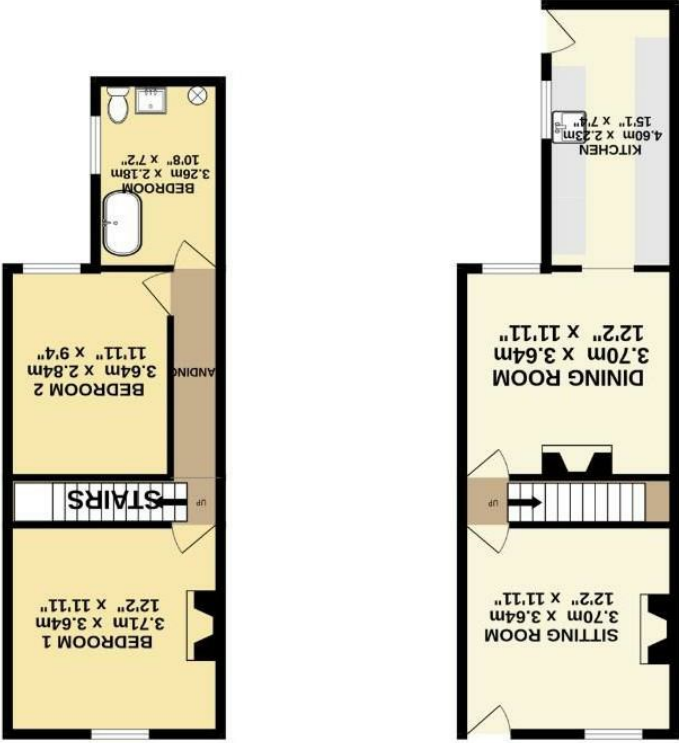


These sales particulars have been produced as a general guide only and we would draw to your attention that we have not carried out a detailed Survey of the property nor have we tested services, appliances or specific fittings. Whilst measurements and statements given within the details are provided in good faith, their accuracy should not be relied upon. If there are any points about which you may be uncertain or would like further clarification, we would suggest that you telephone this office and speak to our staff who will endeavour to assist you.



Whilst every attempt has been made to ensure the accuracy of the footprint contained here, measurements of doors, windows, rooms and any other items are approximately to nearest 10 mm, and should be used as such by any prospective purchaser. The services, systems and appliances shown have not been tested and no guarantee is given as to their capability or efficiency can be given.

Made with Mirograph C2025



GROUND & FIRST FLOOR
75.7 sq.m. (814 sq.ft.) approx.