



## **Braintree Road, Halstead, CO9 3RL**

**Rent - £2,000 PCM      Deposit - £2,307**

Nestled in the village of Sible Hedingham, this detached home on Braintree Road offers a perfect blend of comfort and modern living. With four bedrooms, this property is ideal for families seeking a tranquil yet convenient lifestyle. As you enter the home, you are greeted by a warm and inviting atmosphere, with natural light flowing through the well-designed living spaces. The layout provides plenty of room for relaxation and entertaining, making it a wonderful space for both family gatherings and quiet evenings at home. The surrounding area of Sible Hedingham offers a range of local amenities, including shops, schools, and parks. The property is also conveniently located for access to nearby towns, ensuring that you are never far from essential services and leisure activities. Early viewing advised.

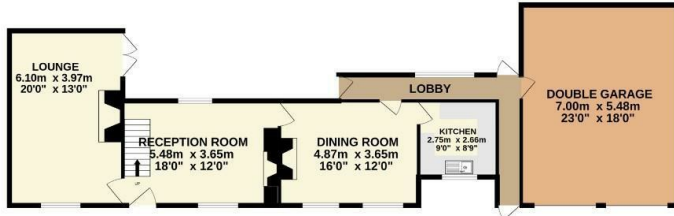
- DETACHED HOUSE
- FOUR BEDROOMS
- THREE RECEPTION ROOMS
- FAMILY BATHROOM
- DRIVEWAY, ENCLOSED REAR GARDEN AND GARAGE
- VILLAGE LOCATION
- OIL HEATING AND ENERGY RATING E
- APPROXIMATE SIZE 1786 SQ FT
- SORRY NO PETS/ COUNCIL TAX BAND F
- AVAILABLE END OF APRIL



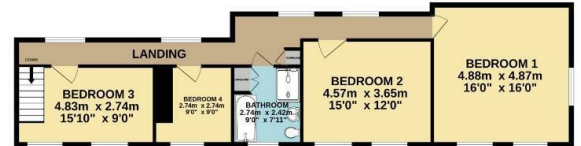
Council Tax Band: F - EPC Rating: E 40



GROUND FLOOR  
113.1 sq.m. (1218 sq.ft.) approx.



1ST FLOOR  
82.2 sq.m. (884 sq.ft.) approx.



TOTAL FLOOR AREA: 195.3 sq.m. (2102 sq.ft.) approx.

Whilst every attempt has been made to ensure the accuracy of the floorplan contained here, measurements of doors, windows, rooms and any other items are approximate and no responsibility is taken for any error, omission or mis-statement. This plan is for illustrative purposes only and should be used as such by any prospective purchaser. The services, systems and appliances shown have not been tested and no guarantee as to their operability or efficiency can be given.

Made with Metropix ©2025

