



Market Grove, Great Yeldham, Essex, CO9 4EF

Rent - £1,450 PCM Deposit - £1,673

Scott Maddison are pleased to offer for rent this three bedroom link detached house in the village of Great Yeldham. This property is let unfurnished and available in February. Outside there is a single garage and driveway for two cars. Early viewing advised.

- LINK DETACHED HOUSE
- THREE BEDROOMS
- OPEN PLAN LIVING
- FAMILY BATHROOM AND ENSUITE
- GARAGE AND TWO PARKING SPACES
- VILLAGE LOCATION
- OIL HEATING AND ENERGY RATING D
- APPROXIMATE SIZE 678 SQ FT
- PETS CONSIDERED/ COUNCIL TAX BAND D
- AVAILABLE END OF FEBRUARY

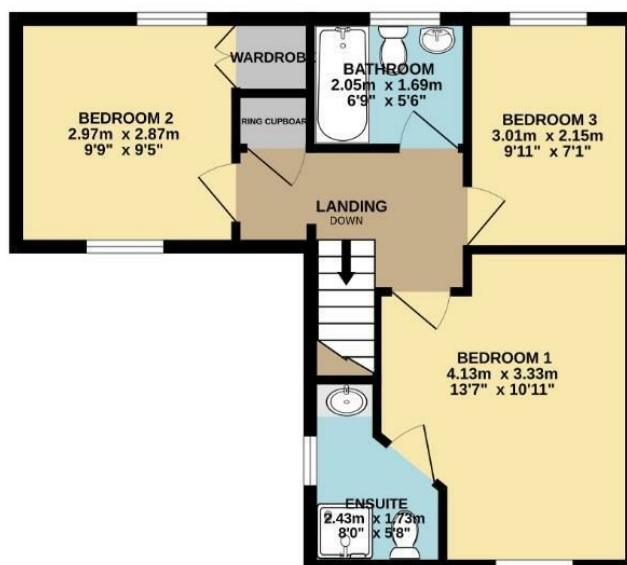


Council Tax Band: D - EPC Rating: D 66

GROUND FLOOR
39.6 sq.m. (426 sq.ft.) approx.



1ST FLOOR
41.4 sq.m. (445 sq.ft.) approx.



TOTAL FLOOR AREA : 80.9 sq.m. (871 sq.ft.) approx.

Whilst every attempt has been made to ensure the accuracy of the floorplan contained here, measurements of doors, windows, rooms and any other items are approximate and no responsibility is taken for any error, omission or mis-statement. This plan is for illustrative purposes only and should be used as such by any prospective purchaser. The services, systems and appliances shown have not been tested and no guarantee as to their operability or efficiency can be given.
Made with Metropix ©2024

