



Kersey Avenue, Sudbury, Suffolk, CO10 0DZ

Rent - £1,175 PCM Deposit - £1,355

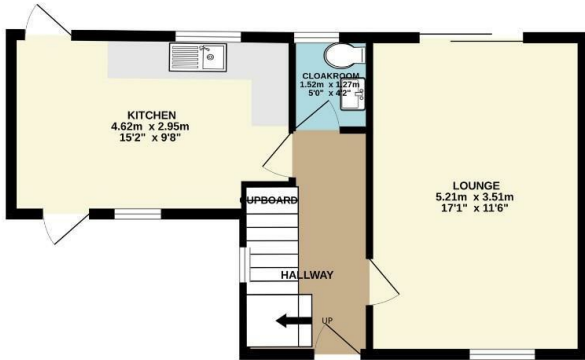
We offer for let this three bedroom mid terraced house. Positioned to the popular northern side of Sudbury. Including double glazing and gas radiators central heating. Early viewing advised.

- MID TERRACED HOUSE
- THREE BEDROOMS
- KITCHEN/ DINER
- FAMILY BATHROOM AND DOWNSTAIRS CLOAKROOM
- ENCLOSED REAR GARDEN AND RESIDENTS PARKING
- NORTHERN SIDE OF SUDBURY
- GAS CENTRAL HEATING AND ENERGY RATING E
- APPROPRIATE SIZE- 861 SQ FT
- SORRY NO PETS/ COUNCIL TAX BAND B
- AVAILABLE OCTOBER

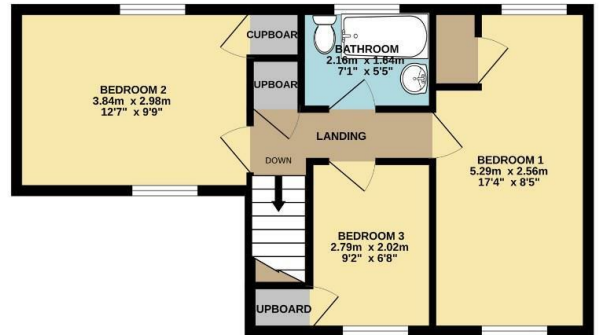


Council Tax Band: B - EPC Rating: E 47

GROUND FLOOR
40.2 sq.m. (433 sq.ft.) approx.



1ST FLOOR
40.9 sq.m. (440 sq.ft.) approx.



TOTAL FLOOR AREA : 81.1 sq.m. (873 sq.ft.) approx.

Whilst every attempt has been made to ensure the accuracy of the floorplan contained here, measurements of doors, windows, rooms and any other items are approximate and no responsibility is taken for any error, omission or mis-statement. This plan is for illustrative purposes only and should be used as such by any prospective purchaser. The services, systems and appliances shown have not been tested and no guarantee as to their operability or efficiency can be given.
Made with Metropix ©2024

