



Greenfields, Gosfield, Essex, CO9 1TR

Rent - £1,200 PCM Deposit - £1,384

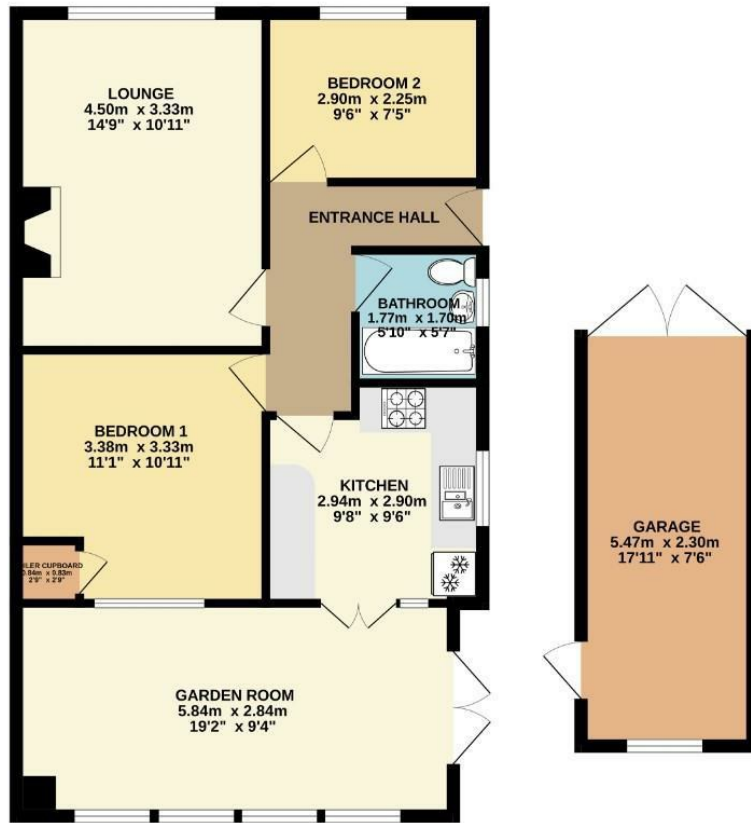
SCOTT MADDISON are delighted to bring to the rental market this two bedroom semi-detached bungalow located in the sought after North Essex village of Gosfield. The bungalow particularly benefits from a 19ft wide garden room at the rear overlooking the 43ft x 34ft garden, single garage and driveway providing off street parking. Viewing is highly recommended.

- SEMI-DETACHED BUNGALOW
- TWO BEDROOMS
- GARDEN ROOM 19FT X 9FT
- BATHROOM
- GARAGE, DRIVEWAY & ENCLOSED REAR GARDEN
- OFTEN REQUESTED VILLAGE LOCATION
- GAS HEATING & ENERGY RATING - D.
- APPROXIMATE SIZE - 731 SQ. FT.
- SORRY NO PETS / COUNCIL TAX BAND A
- AVAILABLE IMMEDIATELY



Council Tax Band: A - EPC Rating: D 66

GROUND FLOOR
77.4 sq.m. (833 sq.ft.) approx.



TOTAL FLOOR AREA: 77.4 sq.m. (833 sq.ft.) approx.

Whilst every attempt has been made to ensure the accuracy of the floorplan contained here, measurements of doors, windows, rooms and any other items are approximate and no responsibility is taken for any error, omission or misstatement. This plan is for illustrative purposes only and should be used as such by any prospective purchaser. The services, systems and appliances shown have not been tested and no guarantee as to their operability or efficiency can be given.
Made with Blueprints 6/20/24.

