



Station Road, Sible Hedingham, Essex, CO9 3QA

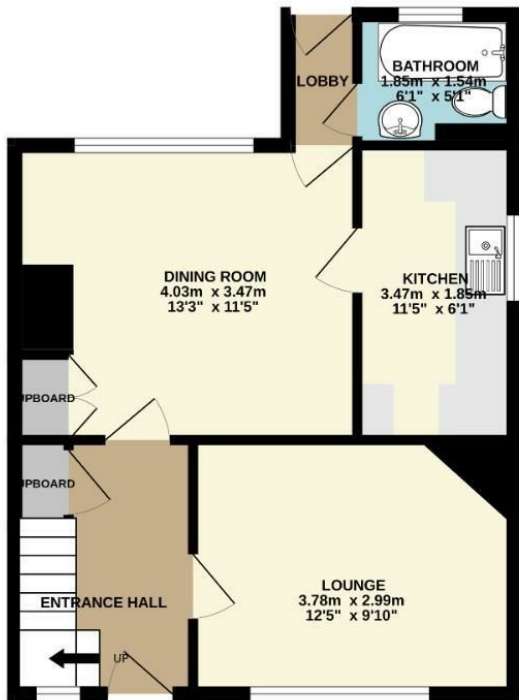
Rent - £1,250 PCM Deposit - £1,442

- SEMI-DETACHED FAMILY HOME
- THREE BEDROOMS
- SEPARATE DINING ROOM
- GROUND FLOOR FAMILY BATHROOM
- ENCLOSED REAR GARDEN & OFF STREET PARKING FOR TWO CARS
- OFTEN REQUESTED VILLAGE LOCATION
- GAS HEATING & ENERGY RATING - D
- APPROXIMATE SIZE - 796 sq. ft.
- ONE PET CONSIDERED / COUNCIL TAX BAND - B
- AVAILABLE EARLY AUGUST 2024

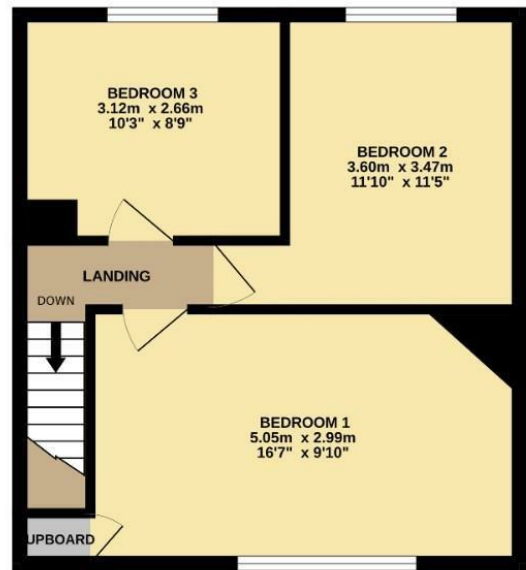


Council Tax Band: B - EPC Rating: D 68

GROUND FLOOR
40.8 sq.m. (440 sq.ft.) approx.



1ST FLOOR
37.2 sq.m. (401 sq.ft.) approx.



TOTAL FLOOR AREA: 78.1 sq.m. (840 sq.ft.) approx.

Whilst every attempt has been made to ensure the accuracy of the floorplan contained here, measurements of doors, windows, rooms and any other items are approximate and no responsibility is taken for any error, omission or mis-statement. This plan is for illustrative purposes only and should be used as such by any prospective purchaser. The services, systems and appliances shown have not been tested and no guarantee as to their operability or efficiency can be given.
Made with Metropix ©2024

