

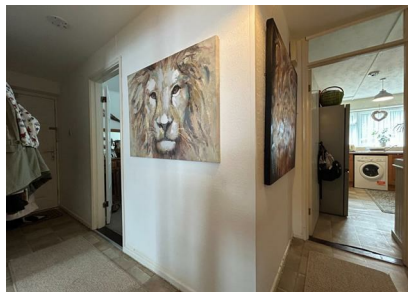


## Colne Valley Close, Halstead, Essex, CO9 1LE

Rent - £925 PCM      Deposit - £1,067

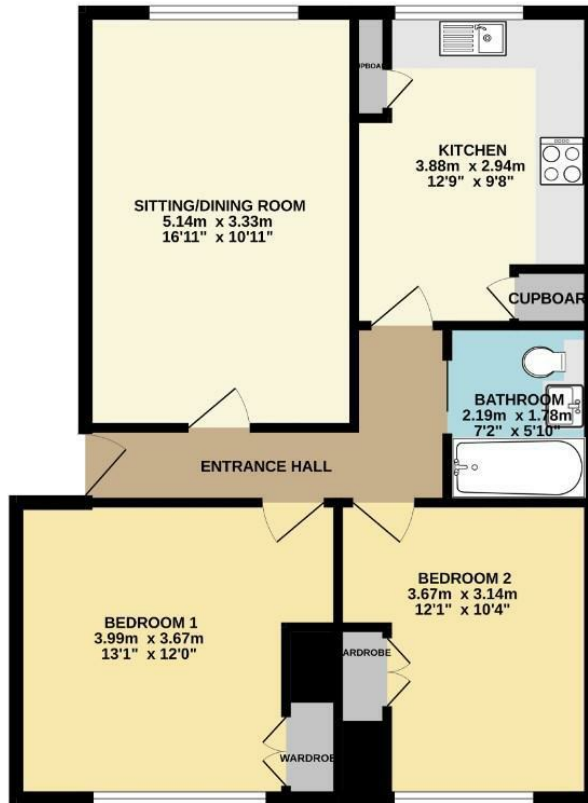
SCOTT MADDISON offer for rent this spacious two bedroom ground floor flat, situated in a cul-de-sac location within close distance to the High Street. The flat is let unfurnished and benefits from contemporary bathroom suite with shower over the bath, gas heating by radiators and a useful outside store. Viewing is recommended.

- GROUND FLOOR FLAT
- TWO DOUBLE BEDROOMS
- SITTING / DINING ROOM
- FAMILY BATHROOM
- COMMUNAL GARDEN, ALLOCATED OUTSIDE SHED
- SPACIOUS ACCOMMODATION
- GAS HEATING BY RADIATORS & ENERGY RATING - C
- APPROXIMATE SIZE - 731 SQ. FT.
- SORRY NO PETS / COUNCIL TAX BAND A
- AVAILABLE AUGUST 2024





GROUND FLOOR  
63.3 sq.m. (681 sq.ft.) approx.



TOTAL FLOOR AREA: 63.3 sq.m. (681 sq.ft.) approx.  
While every attempt has been made to ensure the accuracy of the floorplan contained here, measurements of doors, windows, rooms and any other items are approximate and no responsibility is taken for any error, omission or mis-statement. This plan is for illustrative purposes only and should be used as such by any prospective purchaser. The services, systems and appliances shown have not been tested and no guarantee as to their operability or efficiency can be given.  
Made with Intograph 502024.

