



## Mill Bridge, Halstead, Essex, CO9 2TD

**Rent - £750 PCM      Deposit - £865**

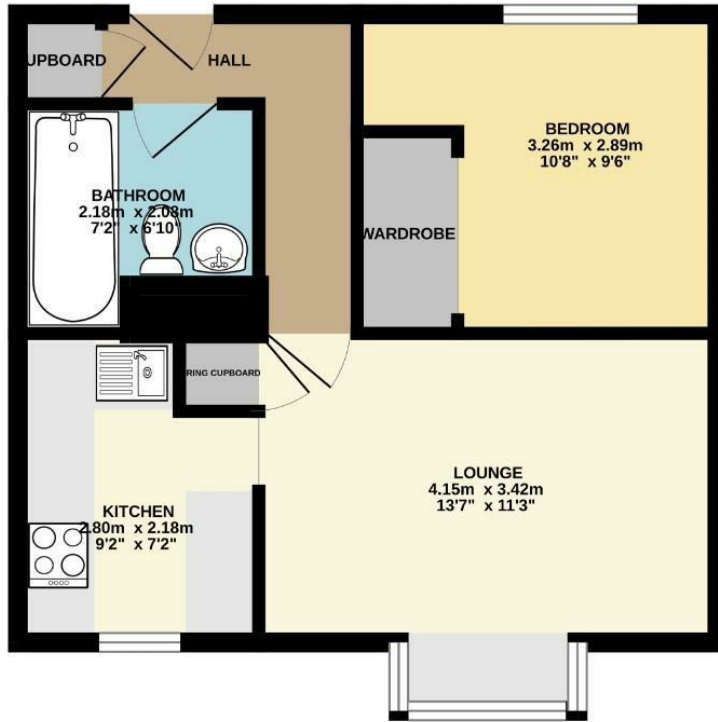
SCOTT MADDISON are pleased to bring to the market for rent this first floor one bedroom flat, offered unfurnished and particularly benefiting from fitted kitchen with a range of wall and base cabinets including an electric oven and hob, white bathroom suite with electric shower over the bath; and an allocated parking space in the residents carpark.

- MODERN FIRST FLOOR FLAT
- ONE BEDROOM
- LET UNFURNISHED
- BATHROOM WITH ELECTRIC SHOWER
- ALLOCATED PARKING SPACE & COMMUNAL GARDENS
- SOUGHT AFTER DEVELOPMENT, CLOSE TO TOWN
- ELECTRIC HEATING & ENERGY RATING - B
- APPROXIMATE SIZE - 344 SQ. FT.
- SORRY NO PETS / COUNCIL TAX BAND A
- AVAILABLE IMMEDIATELY



Council Tax Band: A - EPC Rating: B 81

FIRST FLOOR  
36.5 sq.m. (393 sq.ft.) approx.



TOTAL FLOOR AREA: 36.5 sq.m. (393 sq.ft.) approx.

Whilst every attempt has been made to ensure the accuracy of the floorplan contained here, measurements of doors, windows, rooms and any other items are approximate and no responsibility is taken for any error, omission or misstatement. This plan is for illustrative purposes only and should be used as such by any prospective purchaser. The services, systems and appliances shown have not been tested and no guarantee as to their operability or efficiency can be given.  
Made with Netplan ©2024.

