

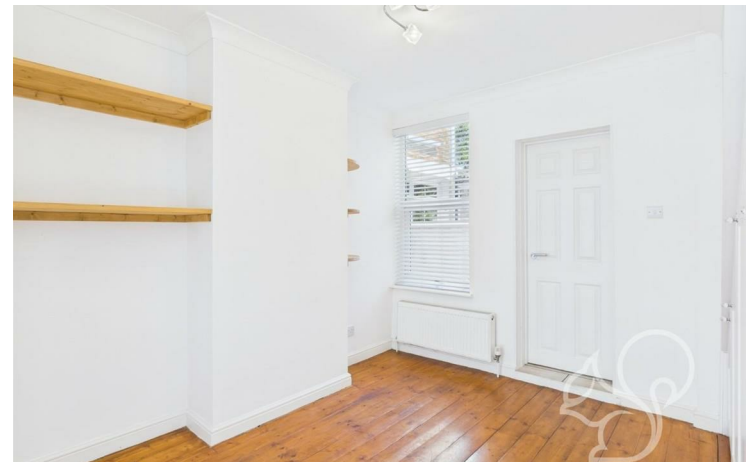
£1,000 Per Month

Per Month

Withipoll Street, Ipswich

Situated just a stone's throw from Ipswich town centre, this beautifully refurbished two-bedroom mid-terraced house offers stylish and comfortable living in an incredibly convenient location. Ideal for professionals, couples, or small families, this home is perfectly placed for easy access to local amenities, shops, restaurants, and public transport.

The property has been refurbished throughout, combining period charm with modern finishes to create a bright and welcoming living space.












oakheart

Date Available:
7th April 2025

Local Authority:

Council Tax Band:
A

Energy Efficiency Rating

	Current	Potential
Very energy efficient - lower running costs		
(92 plus) A		87
(81-91) B		
(69-80) C		
(55-68) D	61	
(39-54) E		
(21-38) F		
(1-20) G		
Not energy efficient - higher running costs		
England & Wales	EU Directive 2002/91/EC 	

Agents Note: Whilst every care has been taken to prepare these particulars, they are for guidance purposes only. All measurements are approximate and are for general guidance purposes only and whilst every care has been taken to ensure their accuracy, they should not be relied upon.

Oakheart Lettings T/A Thompsons Estate Agents
01473 251907
pm@oakheart.co.uk
12 Upper Brook Street, Ipswich, Suffolk, IP4 1EF

Thompsons
ESTB 1933

oakheart