

Thompsons
ESTD 1933

£875 Per Month

Per Month
New Street, Sudbury

This immaculately refurbished one-bedroom maisonette, offering a perfect blend of modern comfort, character, and outdoor space in the heart of Sudbury. This Maisonette is ideal for professionals, singles, or couples seeking stylish living with low maintenance.

Set within a peaceful residential area, the property

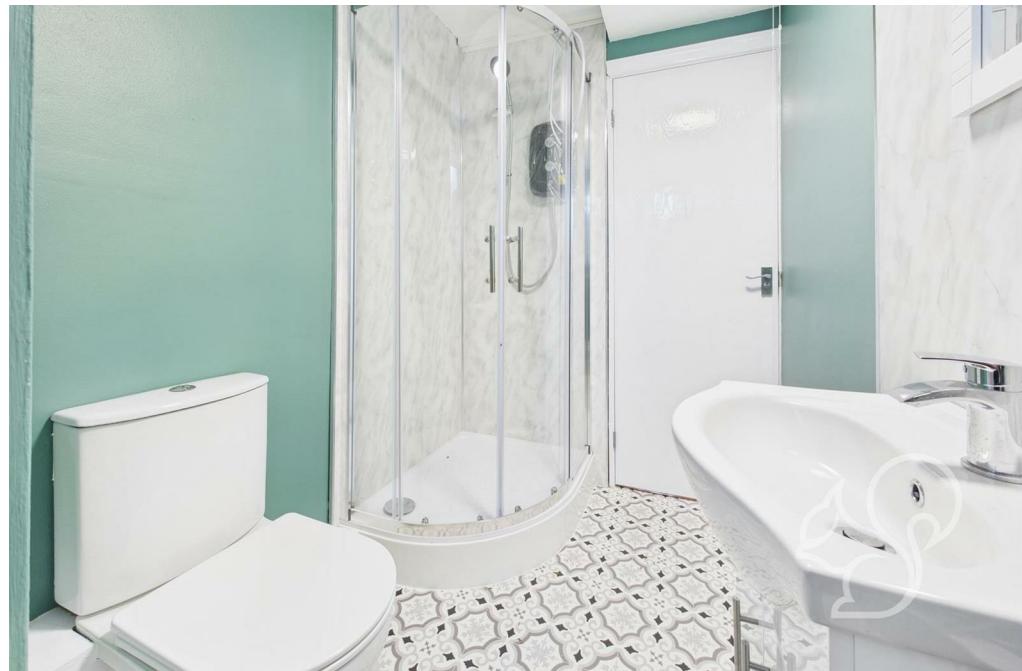
has been thoughtfully updated throughout, featuring high-quality finishes and neutral décor that make it easy to move straight in and make it your own. One of the standout features is the generous private courtyard.

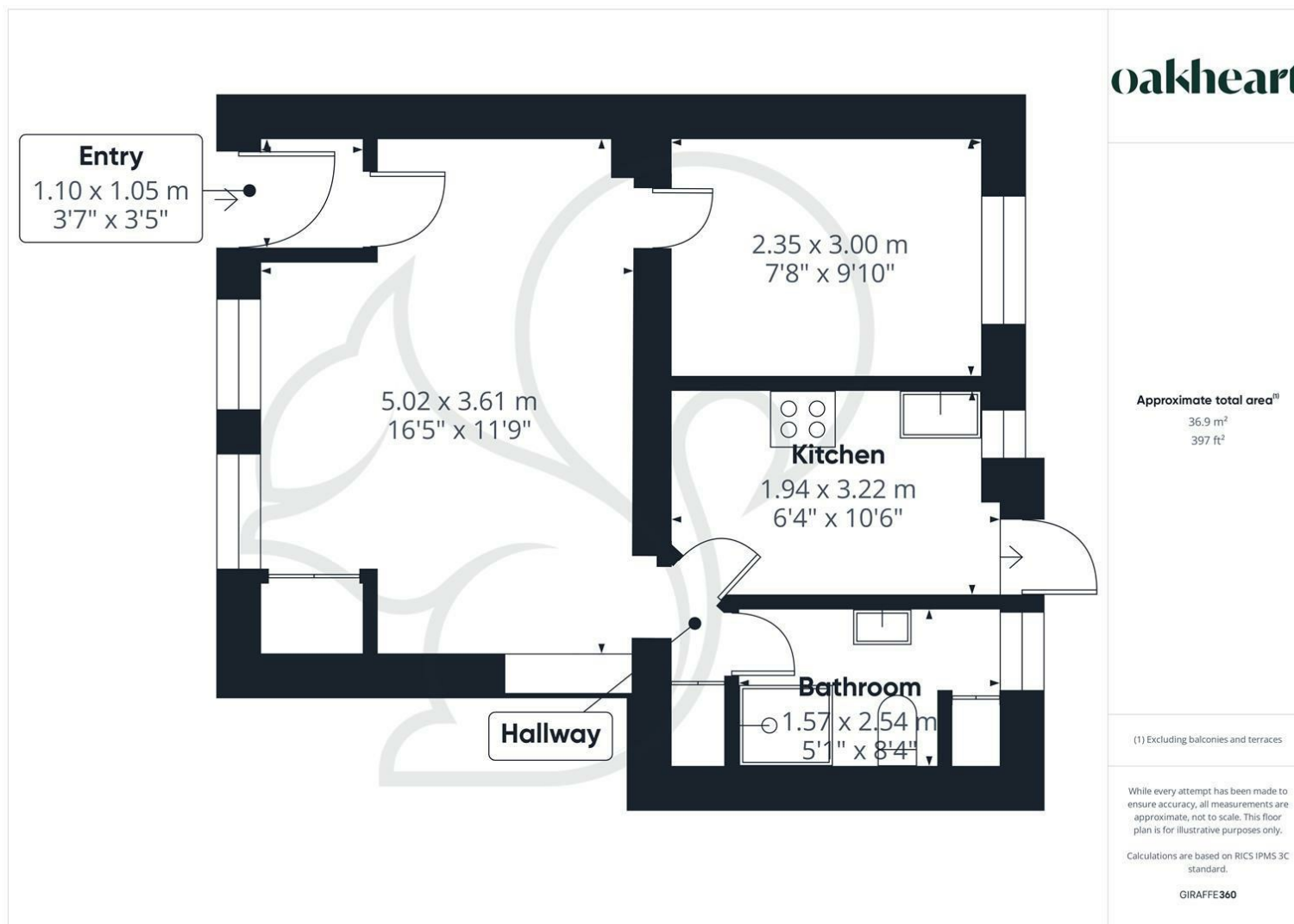
With spacious, well-designed interiors and excellent access to local amenities and transport, this

property truly ticks all the boxes for comfortable and convenient living. Please note carpets to be laid prior to tenancy.










Date Available:
1st May 2025

Local Authority:

Council Tax Band:
A

Energy Efficiency Rating

	Current	Potential
Very energy efficient - lower running costs		
(92 plus) A		78
(81-91) B		
(69-80) C		
(55-68) D	57	
(39-54) E		
(21-38) F		
(1-20) G		
Not energy efficient - higher running costs		
England & Wales	EU Directive 2002/91/EC 	

Agents Note: Whilst every care has been taken to prepare these particulars, they are for guidance purposes only. All measurements are approximate and are for general guidance purposes only and whilst every care has been taken to ensure their accuracy, they should not be relied upon.

Oakheart Lettings T/A Thompsons Estate Agents
01473 251907
pm@oakheart.co.uk
12 Upper Brook Street, Ipswich, Suffolk, IP4 1EF

Thompson's
ESTB 1933

oakheart