



48 Wydale Road, Osbaldwick, York, YO10 3PG

Semi-Detached Property | One Bedroom | Driveway Parking | Close To Local Amenities | Viewing Highly Recommended | Pet Friendly

- Semi-Detached One Bedroom
- Council Tax Band B
- Enclosed Garden
- York Location
- EPC C
- Driveway Parking
- Close to Local Amenities
- Gas Central Heating

£925 PCM

Jigsaw Letting are pleased to welcome to the market this delightful semi-detached house, nestled in the charming area of Osbaldwick, York, offers a perfect blend of comfort and convenience. With one well-proportioned bedroom, this property is ideal for individuals or couples seeking a cosy retreat. The inviting reception room provides a warm and welcoming space, perfect for relaxation or entertaining guests.

The property features a modern bathroom, ensuring that your daily routines are both comfortable and efficient. One of the standout features of this home is the driveway parking, allowing for easy access and secure parking for one vehicle.

Step outside to discover the enclosed garden, a lovely outdoor space that offers privacy and a wonderful area for gardening, relaxation, or enjoying a sunny afternoon. This property is also pet friendly.

Located close to local amenities, this home provides easy access to shops, cafes, and essential services, making daily life convenient and enjoyable. This semi-detached house on Wydale Road presents an excellent opportunity to embrace a comfortable lifestyle in a desirable location. Don't miss the chance to make this charming property your new home.

COUNCIL TAX BAND

Please note that the council tax band for the property has either been advised by the owner or we have sought from online resources. Whilst we endeavour to ensure our details are accurate and reliable, we strongly advise to make further enquiries before continuing.

HOW DO I APPLY FOR A PROPERTY?

To avoid disappointment please contact the office to request an application form for the property you wish to apply for following your viewing.

LETTINGS FEES UPON APPLICATION

Additional fees apply for this property and are as follows; 1 weeks rent holding fee for each property. Please note, the holding fee is deductible from the first month's rent on the property if successful. There will also be a bond for the property equal to 5 weeks rent which will be held for the duration of the tenancy with the DPS. Go to, www.jigsawletting.co.uk or call for more details

LETTINGS VIEWINGS

Strictly by appointment with the sole agents by contacting 01757 241123. If there is any point of particular importance to, that we will be pleased to provide additional information or to make any further enquiries. We will also confirm that the property remains available. This is particularly important if you are travelling some distance to view the property. A full copy of the EPC for the property is available upon request.

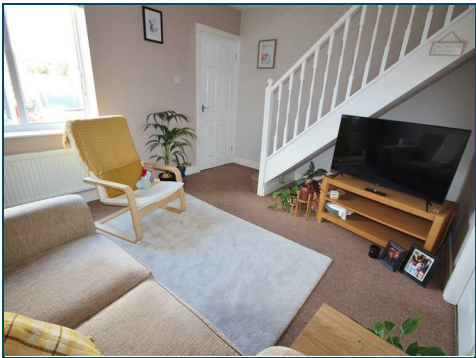
OPENING HOURS LETTING TEAM

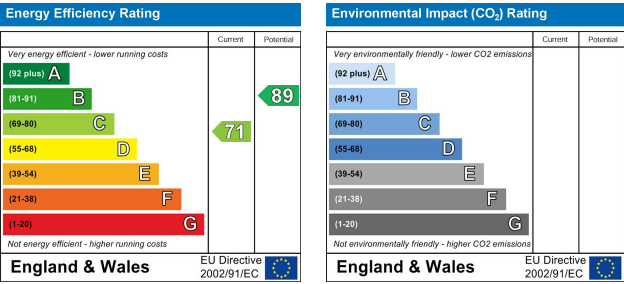
Monday – Friday 9.00am to 5.00pm Saturday – 9.00am – 1.00pm

TO LET PROPERTY DETAILS

Whilst we endeavour to make our property details are accurate and reliable, if there is any point which is of particular importance to you, please contact us and we will be pleased to check the information. Do so particularly if contemplating travelling some distance. These particulars are issued in good faith but do not constitute representations of fact or form part of any offer or contract.







The logo for safeagent, featuring a stylized 's' in a circle followed by the word "safeagent" in lowercase.

11 Finkle Street, Selby, North Yorkshire, YO8 4DT

info@jigsawmove.co.uk | www.jigsawmove.co.uk | info@jigsawletting.co.uk | www.jigsawletting.co.uk

Jigsaw Move : 08975826 VAT: 215610542 | Jigsaw Letting : 07385709 VAT: 847215227

Five gold circular medals arranged horizontally. Each medal has text around the border and a central emblem. The text includes "BEST", "SAFEST", "MOST", "MOST", and "MOST".

Look for Propertymark Protection to ensure your agent is qualified and regulated

aria propertymark PROTECTED

naea propertymark PROTECTED

A portrait of a middle-aged man with short grey hair, wearing a blue suit jacket over a light blue shirt and a dark tie. He is smiling slightly and looking towards the camera.