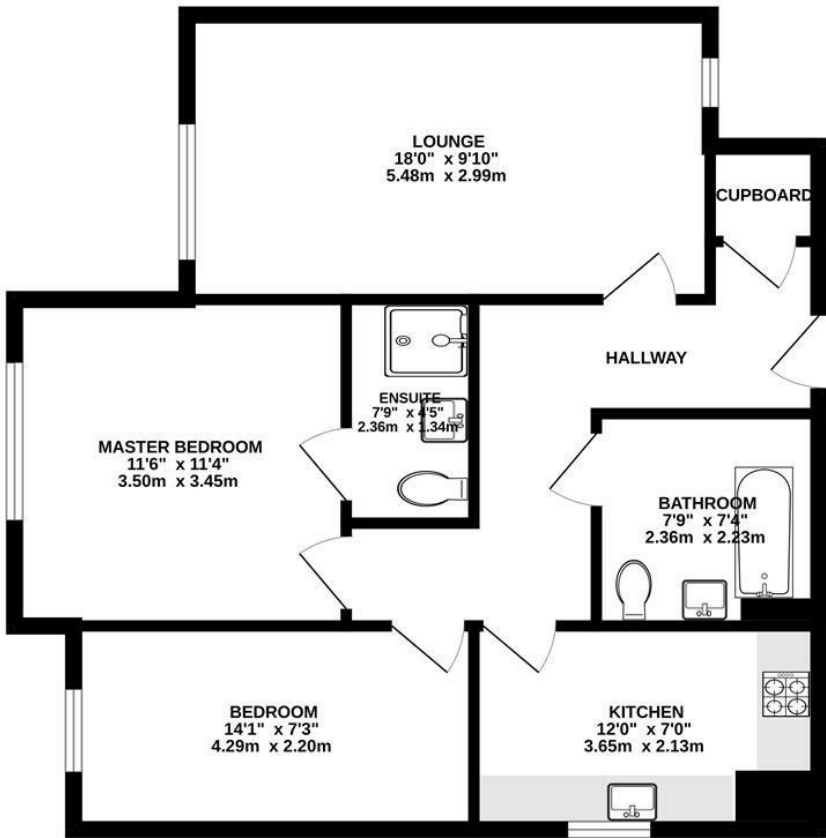



FIRST FLOOR
682 sq.ft. (63.3 sq.m.) approx.



TOTAL FLOOR AREA : 682 sq.ft. (63.3 sq.m.) approx.
Whilst every attempt has been made to ensure the accuracy of the floorplan contained here, measurements of doors, windows, rooms and any other items are approximate and no responsibility is taken for any error, omission or mis-statement. This plan is for illustrative purposes only and should be used as such by any prospective purchaser. The services, systems and appliances shown have not been tested and no guarantee as to their operability or efficiency can be given.
Made with Metropix ©2024

| Energy Efficiency Rating | | |
|---|-------------------------|---|
| | Current | Potential |
| Very energy efficient - lower running costs | | |
| (92 plus) A | | |
| (81-91) B | | |
| (69-80) C | | |
| (55-68) D | | |
| (39-54) E | | |
| (21-38) F | | |
| (1-20) G | | |
| Not energy efficient - higher running costs | | |
| England & Wales | EU Directive 2002/91/EC |  |



Jubilee Court, Sutton, SM2
£1,750 Per Month

0208 687 9787 | turnersproperty.com | 105 London Road, Morden, Surrery, SM4 5HP

Jubilee Court, Sutton, SM2
£1,750 Per Month

0208 687 9787 | turnersproperty.com | 105 London Road, Morden, Surrery, SM4 5HP



[Full description](#)

Key Features

- 2 bedroom 2 bathrooms
- Sth Sutton
- Allocated parking
- Available now
- Good order
- Available now.
- Council tax band D 2174.15 per annum
- EPC rating B