



Connaught Gardens, Morden SM4

TO LET: £1400 PCM

0208 687 9787 | turnersproperty.com | 105 London Road, Morden SM4 5HP

TURNERS





Full Description

To let, a newly refurbished, two-bedroom maisonette with open-plan living room and kitchen, two bedrooms, and bathroom located just short walk away from the River Wandle and less than a mile from Morden Town Centre.

The property comprises living room with an open plan kitchen, two double bedrooms and a bathroom and on the ground floor. The property painted white throughout with freshly laid, dove-grey carpets to the bedrooms, new wood-laminate flooring in the living room and kitchen, and tiled floor in the bathroom.

The I-shaped open-plan living space means that the reception room and kitchen are two discrete spaces allowing you to sit and relax on an evening without staring at the washing up!

The brand new kitchen is very contemporary with dark grey cabinets and matching composite worktops and new oven and hob, while the bathroom has cream colours tiles to the walls with a white, three-piece bath-suite with shower over the bath and glass screen.

The main bedroom has plenty of space for a double bed and freestanding furniture while the second bedroom, although smaller, still has space for a double bed and benefits from built-in storage space.

Previous tenants have also used the secluded patio area to the front of the property as a garden.

Connaught Gardens is a cul-de-sac, located just off St Helier Avenue very close to the National Trusts Morden Hall Park and is approx 0.6miles to Morden Town Centre and Station (13mins walk based on Google maps) though the area is also well served by local bus routes serving the wider area including Sutton, Croydon and Wimbledon.

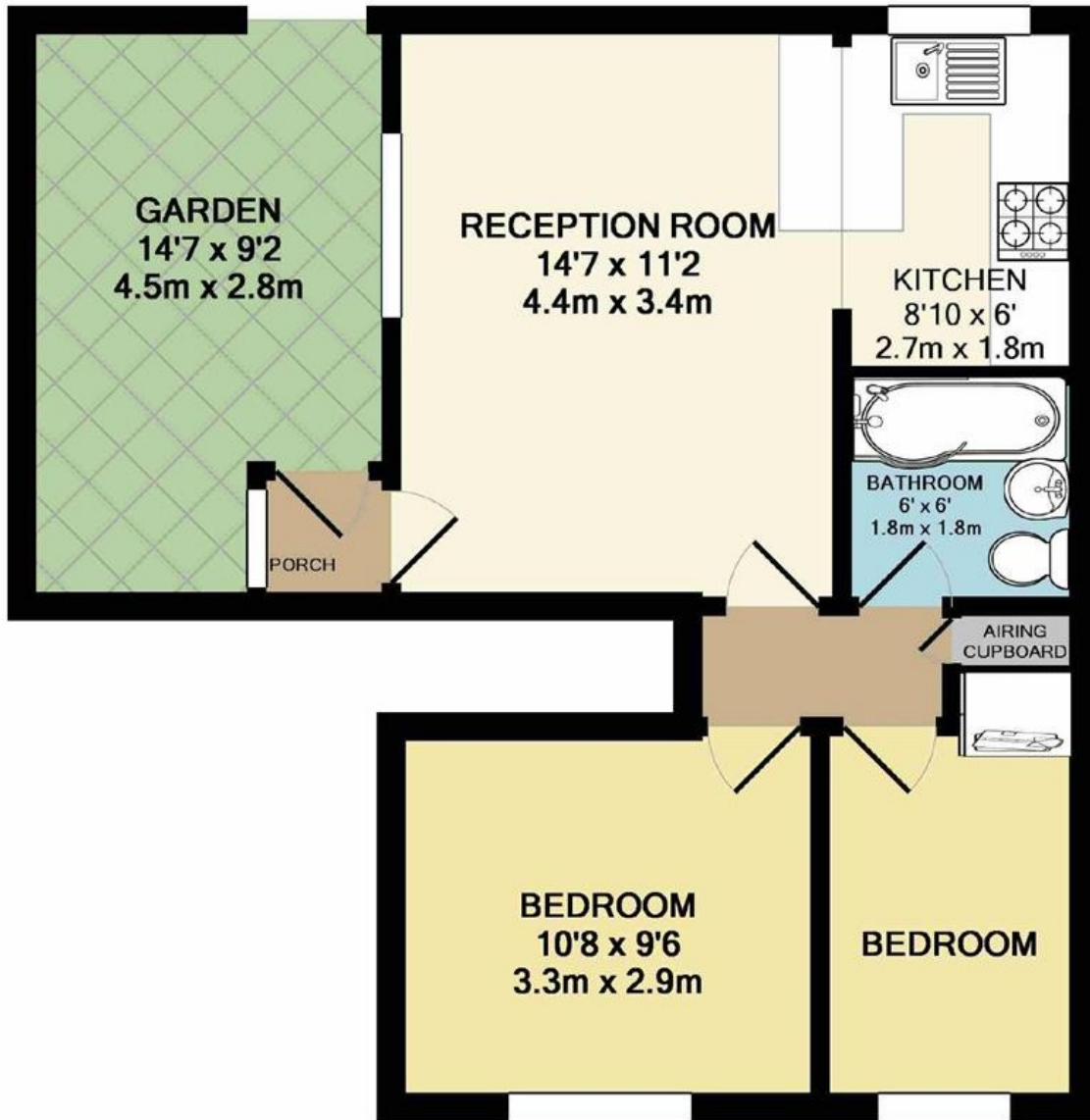
Viewing is by arrangement only contact: [0208 687 9787](tel:02086879787) / info@turnersproperty.com



Key Features

- Two Double-Bedroom Maisonette
- Newly Refurbished Throughout
- Contemporary Kitchen
- Double Glazed Throughout
- Cul-De-Sac Location
- Close to Morden Town Centre
- Close to River Wandle & Morden Hall Park
- EPC Rating: C
- Video Tour: <https://youtu.be/ThIr4c5mFRA>

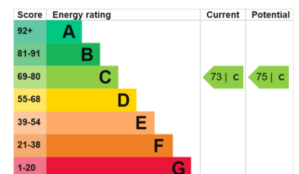




TOTAL APPROX. FLOOR AREA 455 SQ.FT. (42.3 SQ.M.)

Whilst every attempt has been made to ensure the accuracy of the floor plan contained here, measurements of doors, windows, rooms and any other items are approximate and no responsibility is taken for any error, omission, or mis-statement. This plan is for illustrative purposes only and should be used as such by any prospective purchaser. The services, systems and appliances shown have not been tested and no guarantee as to their operability or efficiency can be given

Made with Metropix ©2018



Connaught Gardens, Morden SM4

TO LET: £1400 PCM

0208 687 9787 | turnersproperty.com | 105 London Road, Morden SM4 5HP

