



8 Redbourne Terrace, Boston, PE21 8PX

 4  2  1

Freehold

£179,950



Key Features

- Three storey, mid-terrace town house
- Four bedrooms
- Lounge/diner & kitchen
- Cloakroom, en-suite & bathroom
- Enclosed rear garden
- Allocated parking
- EPC rating C





A three storey, mid-terrace town house within walking distance to Boston Town Centre. Currently run as a successful holiday let and an ideal investment opportunity. Having accommodation comprising: entrance hall, cloakroom, lounge/diner and fitted kitchen to ground floor. Two bedrooms and bathroom to first floor. Master bedroom with en-suite and further bedroom to second floor. Outside the property has an enclosed rear garden and allocated parking. The property benefits from gas central heating and double glazing.



ACCOMMODATION

Part glazed front entrance door through to the:

ENTRANCE HALL

Having coved ceiling, radiator, wood effect flooring and staircase rising to first floor.

CLOAKROOM

Having radiator, tiled floor, extractor, close coupled WC and hand basin.

LOUNGE/DINER

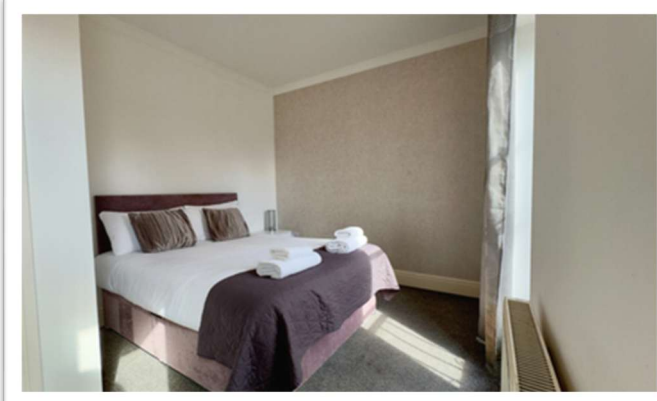
4.84m x 4.77m (15'11" x 15'7")

Having french doors to rear elevation, coved ceiling, two radiators and wood effect flooring. Opening to the:

KITCHEN

3.65m x 2.68m (12'0" x 8'10")

Having window to front elevation, coved ceiling, radiator and tiled floor. Fitted with a range of base & wall units with granite work surfaces & tiled splashbacks comprising: 1 1/4 bowl stainless steel sink with drainer & mixer tap inset to work surface, integrated dishwasher, cupboards & drawers under, cupboards & cupboard housing gas fired boiler providing for both domestic hot water & heating over. Further work surface with inset gas hob, cupboards & drawers under, cupboards & stainless steel cooker hood over. Tall unit to side housing integrated electric double oven with cupboards under & over, further tall unit housing integrated fridge & freezer.



FIRST FLOOR LANDING

Having radiator and staircase rising to first floor.

BEDROOM TWO

6.07m x 3.54m (19'11" x 11'7")

Having two double doors with juliette balconies to rear elevation, coved ceiling and radiator.

BEDROOM THREE

4.77m x 2.98m (15'7" x 9'10")

(max) Having two double doors with juliette balconies to front elevation, coved ceiling and radiator.

BATHROOM

2.25m x 2.26m (7'5" x 7'5")

Having heated towel rail, part tiled walls, extractor, tiled floor, panelled bath with shower attachment & anti-splash screen over, close coupled WC and pedestal hand basin.

SECOND FLOOR LANDING

Having radiator and built-in cupboard with space & plumbing for automatic washing machine.

MASTER BEDROOM

6.08m x 3.57m (19'11" x 11'8")

Having two windows to front elevation, coved ceiling, radiator and built-in cupboard.

EN-SUITE

2.11m x 1.71m (6'11" x 5'7")

Having heated towel rail, wood effect flooring, tiled splashbacks, extractor, fully tiled shower enclosure with mixer shower fitting, close coupled WC and pedestal hand basin.

BEDROOM FOUR

4.74m x 3.1m (15'7" x 10'2")

Having two windows to rear elevation, coved ceiling, radiator and built-in cupboard.



EXTERIOR

To the front of the property there is a small enclosed garden with a footpath leading to the front entrance door.

REAR GARDEN

Being enclosed by timber fencing and having a covered paved patio with a lawned garden beyond.

SERVICES

The property has mains gas, electricity, water and drainage connected. Heating is via a gas fired boiler serving radiators and the property is double glazed. The current council tax is band C.

VIEWING

By appointment with Newton Fallowell - telephone 01205 353100.

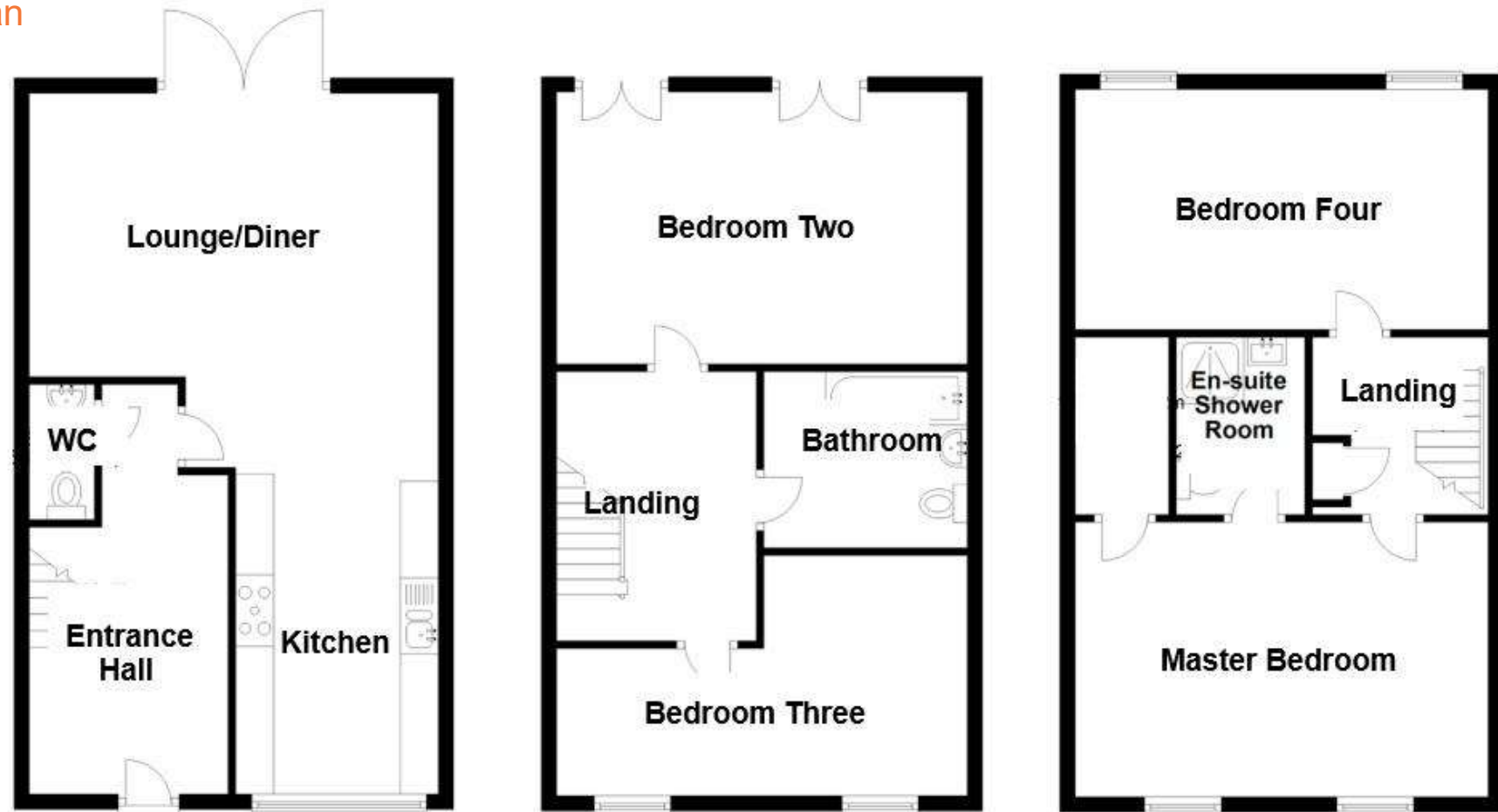
AGENT'S NOTES

These particulars are issued in good faith but do not constitute representations of fact or form part of any offer or contract. The matters referred to in these particulars should be independently verified by prospective buyers or tenants. Neither Newton Fallowell nor any of its employees or agents has any authority to make or give any representation or warranty whatever in relation to this property.

Anti-Money Laundering Regulations – Intending purchasers will be asked to produce identification documentation at the offer stage and we would ask for your co-operation in order that there will be no delay in agreeing a sale.



Floorplan



Newton Fallowell Boston (Sales)

01205 353100

boston@newtonfallowell.co.uk