



27 Clover Way, Swineshead, Boston, PE20 3NW



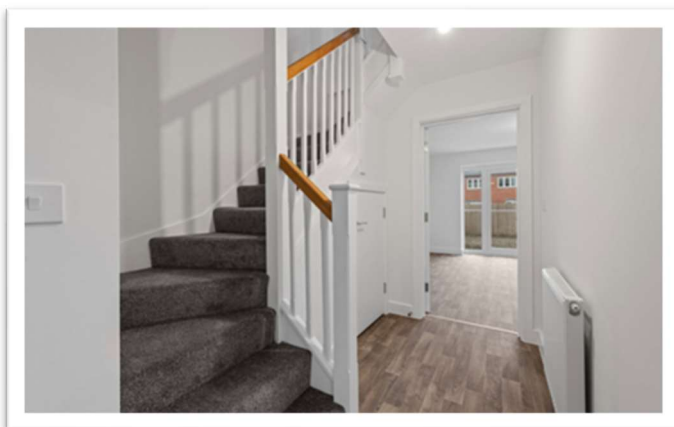
Freehold

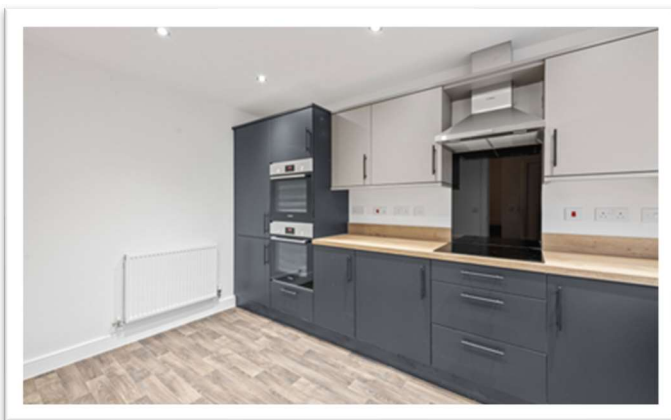
£210,000



Key Features

- New build three storey semi-detached house
- Three bedrooms
- Lounge/diner & kitchen
- Cloakroom, bathroom & shower room
- Enclosed rear garden
- Integrated appliances
- EPC rating TBC





The Cambridge is a popular design built by the renowned builders, Towey Homes. This semi-detached house has high quality fixtures & fittings throughout and the quality and attention to detail is something that has become a trademark with Towey Homes.

The property has an entrance hall, cloakroom, lounge/diner with french doors to the garden and kitchen with integrated appliances to ground floor. Two bedrooms and bathroom to first floor. Further bedroom and shower room to second floor. Outside the property has off-road parking and an enclosed rear garden. The property benefits from gas central heating, double glazing and 10 year NHBC certificate.

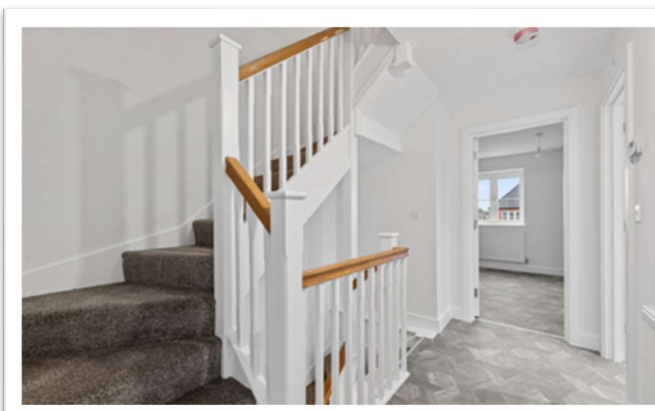


Located in the ever-popular village of Swineshead, The Nursery, has proven to be an extremely popular development benefitting from all the local amenities Swineshead has to offer including a large Co-Op, pub, takeaways, schools and many other traditional village amenities. The larger market town of Boston lies roughly a 15-minute drive away where a wider range of amenities can be found including most major supermarkets and a train station.

With reservations currently being taken, call our offices now to arrange your viewing!

TOWEY HOMES

Towey Homes is a family owned business who are proud of their reputation to consistently deliver high quality services, on time and within a safe working environment and they have established long term partnerships with many clients. "The Nursery" will be the first exciting venture into building homes for a new generation, with such superior build quality and attention to detail, we believe Towey Homes will become a name synonymous with excellence and distinction. Each home will be constructed with care and dedication by skilled craftsmen and along with our chosen professional sales people at Newton Fallowell, we will work together to deliver the highest standards of design, construction and service to make buying your dream home a reality



ACCOMMODATION

The accommodation in brief comprises:

ENTRANCE HALL

CLOAKROOM

LOUNGE/DINER

4.98m x 4m (16'4" x 13'1")

KITCHEN

4.25m x 2.55m (13'11" x 8'5")

FIRST FLOOR LANDING

BEDROOM ONE

4.98m x 3.16m (16'4" x 10'5")

BEDROOM TWO

4.98m x 3.17m (16'4" x 10'5")

(max)

BATHROOM

2.3m x 1.82m (7'6" x 6'0")

SECOND FLOOR LANDING

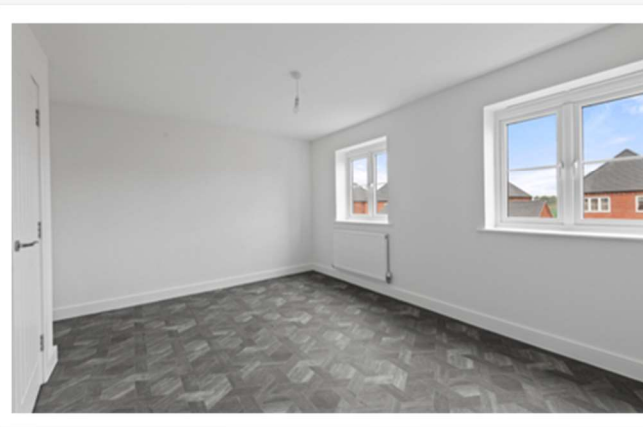
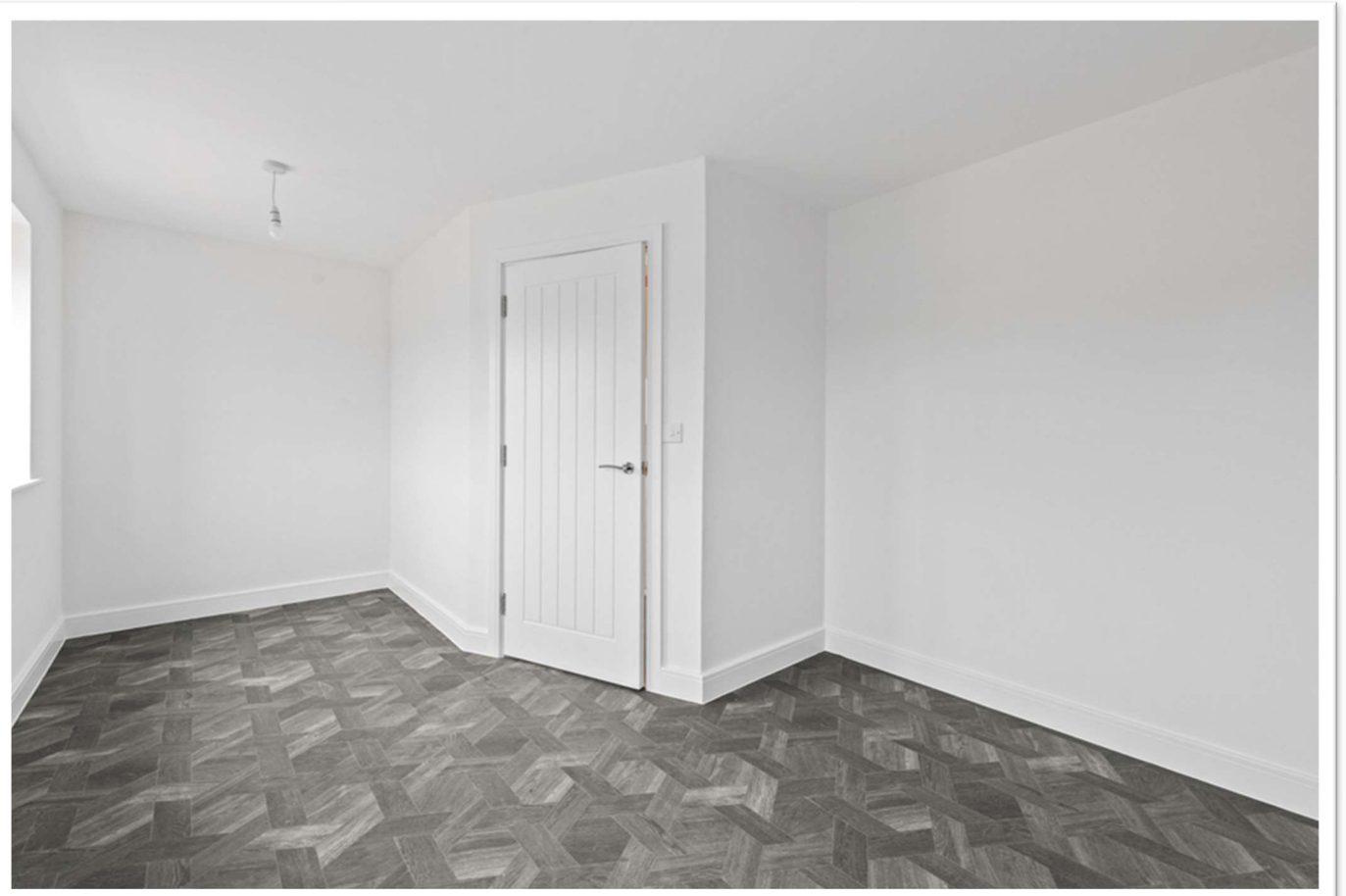
BEDROOM THREE

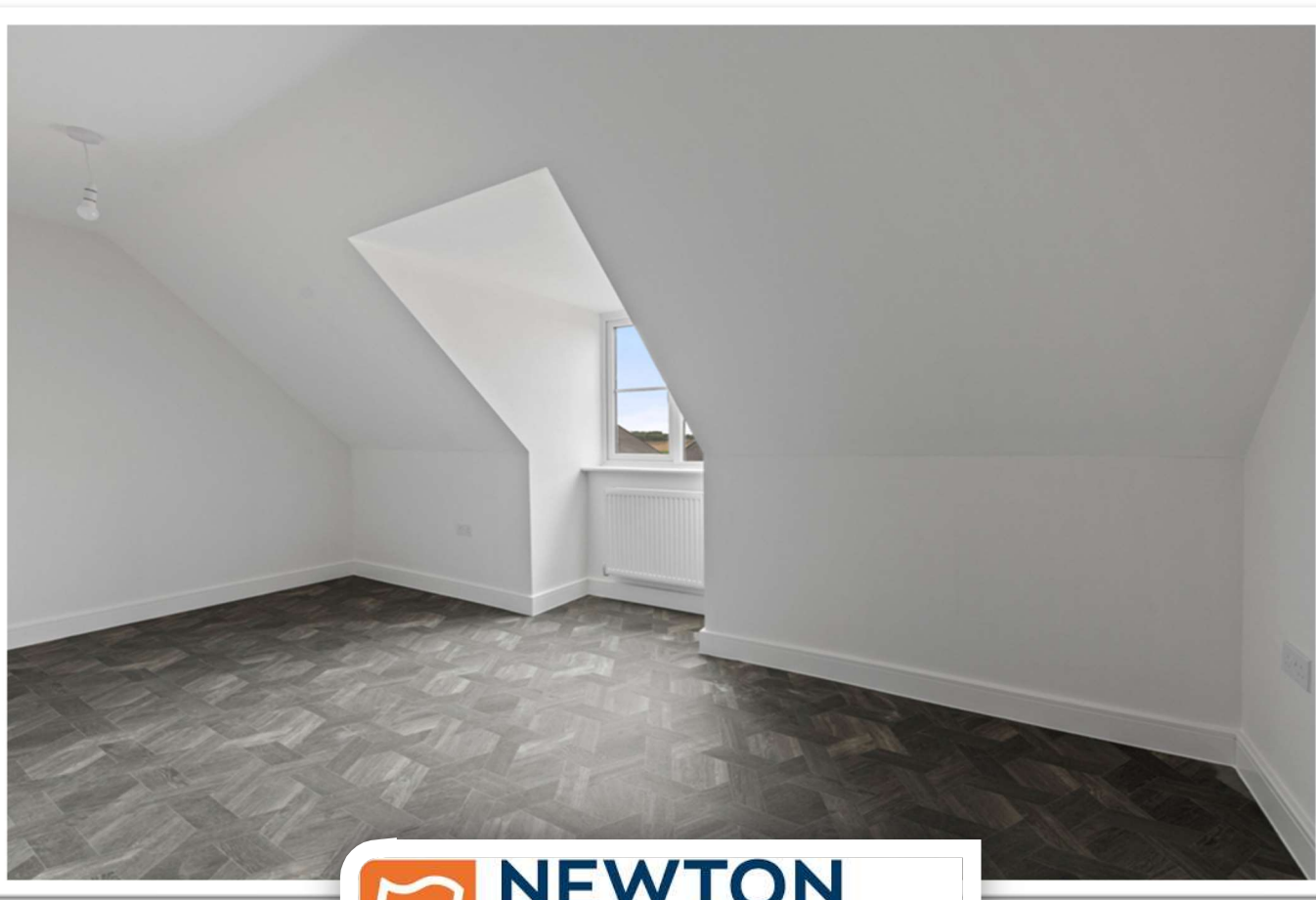
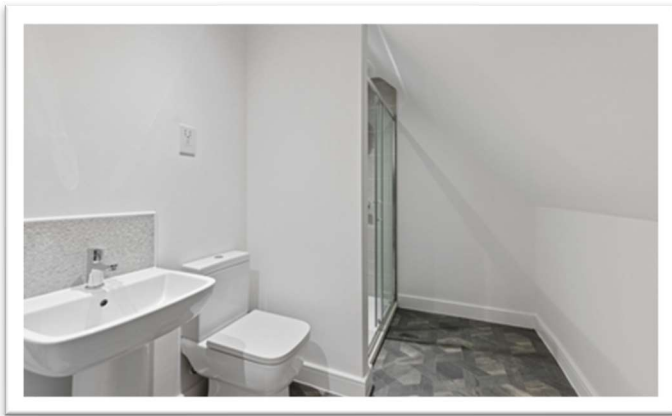
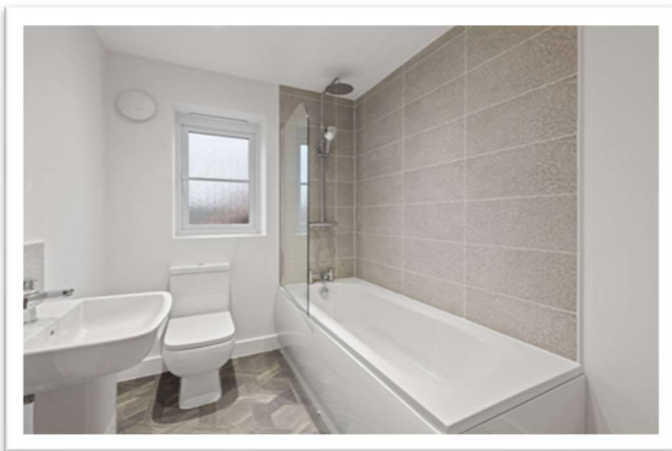
4.83m x 3.29m (15'10" x 10'10")

(max)

SHOWER ROOM

3.46m x 2.13m (11'5" x 7'0")

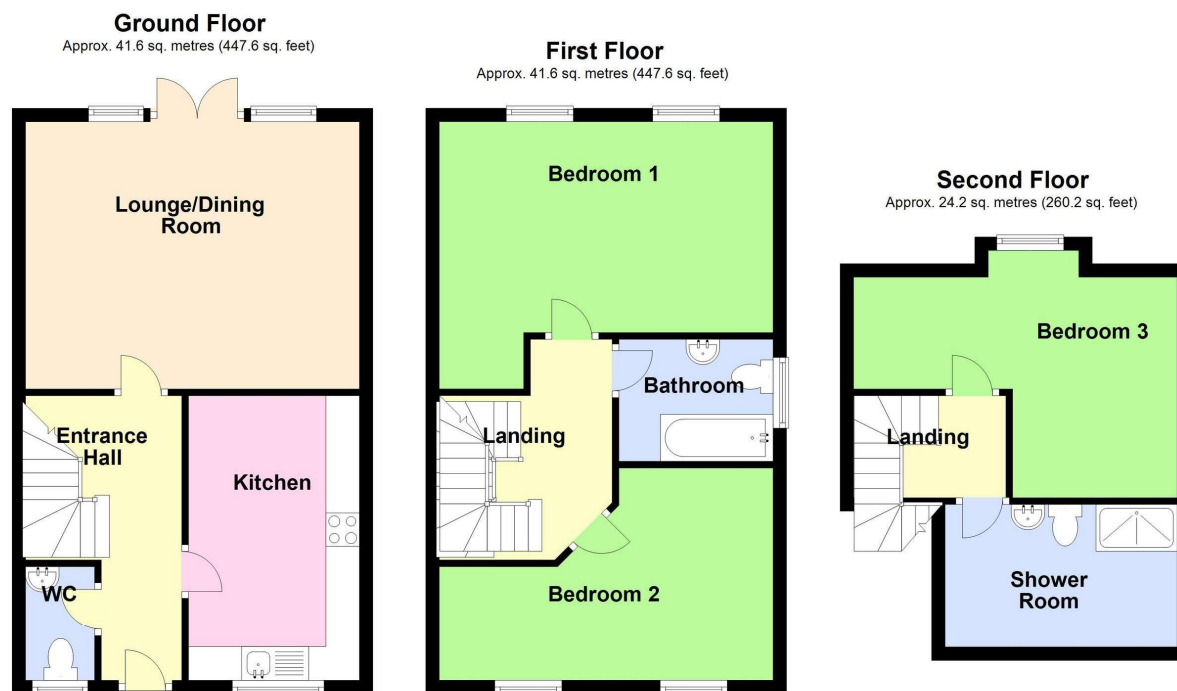




 **NEWTON
FALLOWELL**



Floorplan



Total area: approx. 107.3 sq. metres (1155.4 sq. feet)

EXTERIOR

The property has a driveway providing off-road parking and an enclosed rear garden.

SERVICES

The property will have mains gas, electricity, water and drainage connected. Heating is via a gas fired boiler served by radiators and the property is double glazed.

VIEWING

By appointment with Newton Fallowell - telephone 01205 353100.

AGENT'S NOTES

Please note that the photographs are of a similar completed property and for guidance purposes only.

These particulars are issued in good faith but do not constitute representations of fact or form part of any offer or contract. The matters referred to in these particulars should be independently verified by prospective buyers or tenants. Neither Newton Fallowell nor any of its employees or agents has any authority to make or give any representation or warranty whatever in relation to this property.

Anti-Money Laundering Regulations – Intending purchasers will be asked to produce identification documentation at the offer stage and we would ask for your co-operation in order that there will be no delay in agreeing a sale.



Newton Fallowell Boston (Sales)

01205 353100

boston@newtonfallowell.co.uk