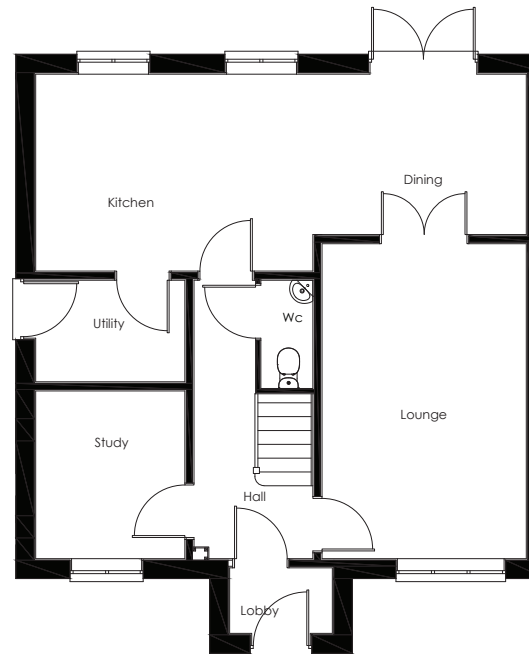
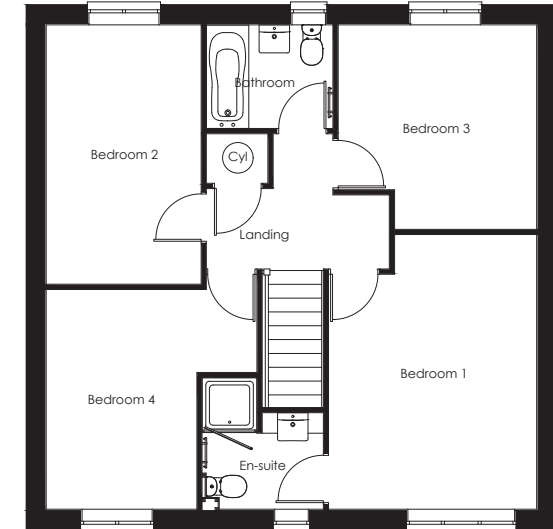


# THE CITRINE

## A FOUR BEDROOM HOME



GROUND FLOOR



FIRST FLOOR



[CYDENHOMES.CO.UK](https://www.cydenhomes.co.uk)

LOUNGE	5166 x 3350	16'11" x 10'11"
KITCHEN / DINING	8046 x 3230	26'4" x 10'7"
UTILITY	2446 x 1666	8'0" x 5'5"
STUDY	2750 x 2446	9'0" x 8'0"
WC	1775 x 850	5'9" x 2'9"

BEDROOM 1	4505 (MAX) x 3414	14'9" (MAX) x 11'2"
EN-SUITE	1989 x 1247	6'6" x 4'1"
BEDROOM 2	4255 x 2552	13'11" x 8'4"
BEDROOM 3	3355 (MAX) x 3257	11'0" (MAX) x 10'8"
BEDROOM 4	3605 x 2471 (MIN)	11'9" x 8'1" (MIN)
BATHROOM	2076 x 1807 (MAX)	6'9" x 5'11" (MAX)

Whilst these particulars are prepared with due care for the convenience of the intending purchasers, the information contained therein is intended as a preliminary guide only. The photographs are of similar house types and may vary in terms of finish, detail and can be built in terraced, semi-detached or detached forms. Please ask your New Homes Sales Advisor for details. The right is expressly reserved by the company to amend or vary the same, and therefore nothing herein contained shall constitute or form part of any contract.