



Hawker Drive, Addlestone, KT15 2FP

g
GRANTS
HOMES



We are delighted to present this beautifully appointed four-bedroom townhouse, built in 2017 by Redrow Homes and further enhanced by the current owners to create a stylish, modern family home.

The ground floor offers a welcoming front-aspect, fully fitted kitchen/diner, ideal for everyday living and entertaining, alongside a rear-aspect living room with French doors opening onto the landscaped rear garden. A discreet laundry cupboard and cloakroom WC complete this level.

On the first floor, a central landing leads to a rear-aspect single bedroom, a rear-aspect double bedroom with built-in wardrobes, a front-aspect double bedroom, and a beautifully finished family bathroom.

The impressive main bedroom occupies the entire second floor, featuring a dual aspect, fitted wardrobes, and a private en-suite shower room, creating a superb principal suite.

Externally, the property benefits from two allocated parking spaces to the front and a landscaped rear garden with lawn area and large garden outbuilding.

Ideally located within easy walking distance of the train station and local amenities, the home is just over a mile from Weybridge town centre and offers excellent commuter access, being only a couple of miles from Junction 11 of the M25.

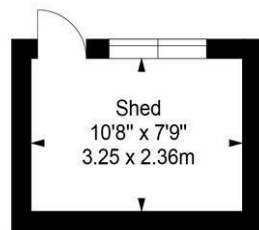
Freehold





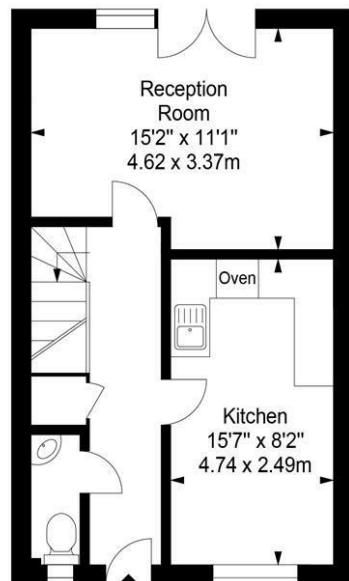
EPC: B86



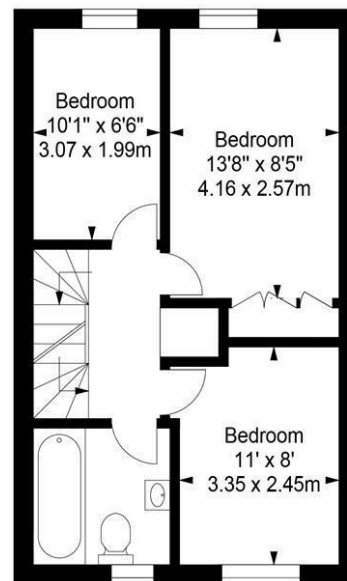


Approximate Area = 1,090 sq ft / 101.26 sq m

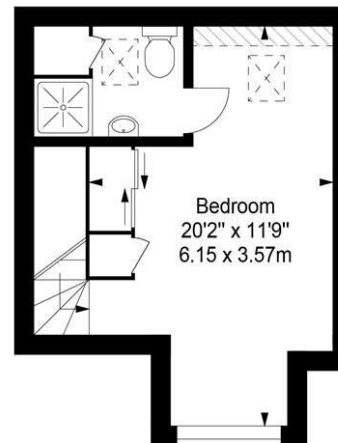
For identification only - Not to scale



Ground Floor



First Floor



Second Floor

Every attempt is made to assure accuracy, however measurements are approximate and for illustrative purposes only. Not to scale.

