



Hawker Drive, Addlestone, KT15 2FA

g
GRANTS
HOMES



Immaculately presented, modern ground floor apartment featuring bright, open-plan living and a desirable south-facing aspect, further enhanced by a good-sized patio area ideal for outdoor relaxation. The property offers a well-proportioned double bedroom and is finished to a high standard throughout, creating a stylish and comfortable home. Benefits include a long lease and allocated parking. Ideally located within close proximity to Addlestone town centre and train station, with Weybridge town centre just one mile away, this property is perfectly positioned for both convenience and connectivity

Leasehold



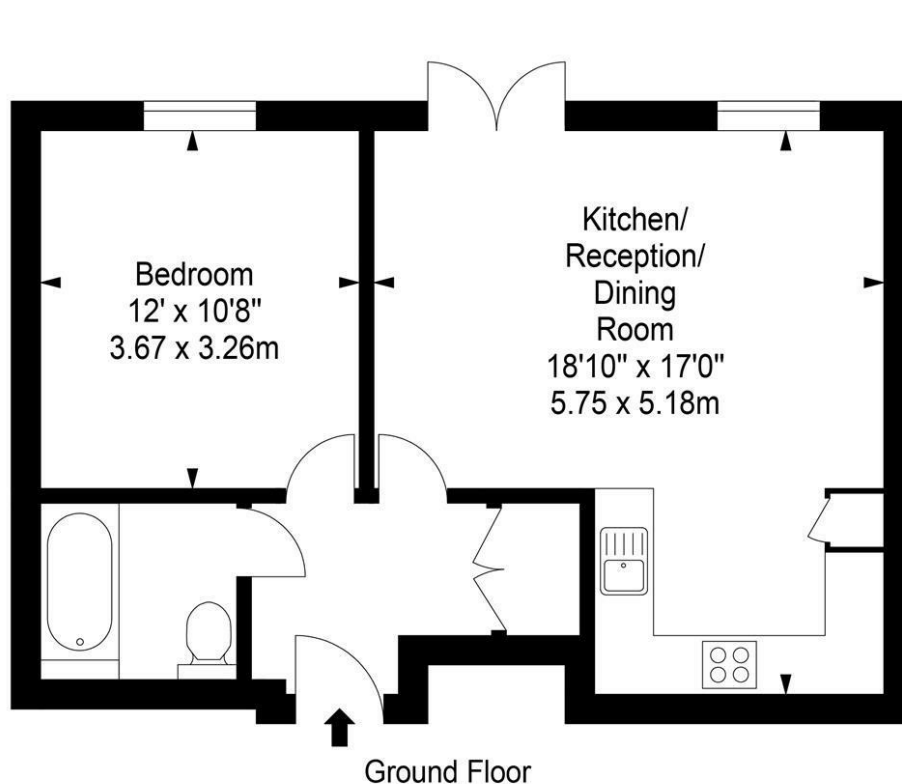


EPC: B83



Approximate Area = 515 sq ft / 47.87 sq m

For identification only - Not to scale



Every attempt is made to assure accuracy, however
measurements are approximate and for illustrative purposes only. Not to scale.

Grants Homes 155 Station Road Addlestone KT15 2AT
T: 01932 858885 E: addlestone@grantshomes.co.uk

g
GRANTS
HOMES