



Rowhurst Avenue, Addlestone, KT15 1NF





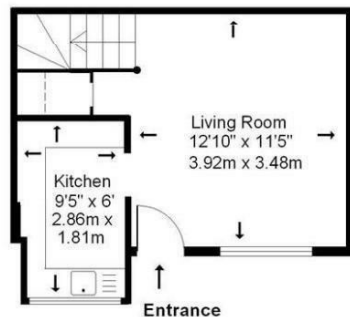
Offered to the market with No Onward Chain is this well presented one bedroom house with good size private garden, located on a quiet residential development in Addlestone. The property has a modern feeling throughout with contemporary flooring and carpets throughout and comprises a good sized living room, fully fitted kitchen, a large double bedroom and stylish bathroom with shower over bath. Ample residents parking is available. Perfect for a first time buyer or a buy to let investor with an expected rental of £1250 per month.

NB. Images are pre-tenancy.

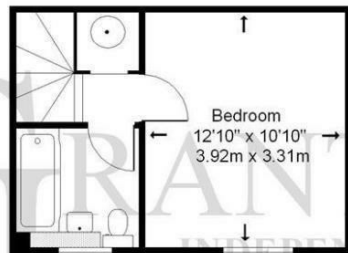
Freehold



Ground Floor



First Floor



Not to scale

Approximate Gross Internal Floor Area: 44m sq (473sq ft)

Whilst every attempt has been made to ensure the accuracy of this floor plan, room sizes and measurements are approximate and accordingly should not be relied upon for carpets and furnishings. These plans are for representation purposes only and no responsibility can be given for errors and omissions.

EPC Rating: 64 D

Grants Homes 155 Station Road, Addlestone, Surrey, KT15 2AT
T: 01932 858885 E: addlestone@grantshomes.co.uk

