



Bridge House, Bridge Wharf, Chertsey, KT16 8JB





Offered to the market with no onward chain is this well presented two-bedroom ground floor apartment, located in the prestigious Bridge Wharf development in Chertsey, offering views of the River Thames.

This spacious and stylish home features two generous double bedrooms, two bathrooms (including an ensuite to the principal bedroom), and a bright, open-plan living/dining area with direct access to a private patio with views of the river—perfect for relaxing or entertaining.

The modern fitted kitchen comes fully equipped with integrated appliances, while additional highlights include ample built-in storage, a secure entry phone system, and an allocated parking space.

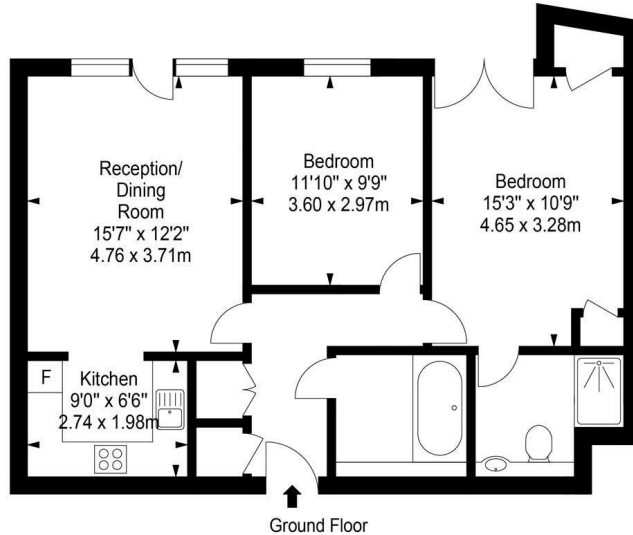
Ideally situated within walking distance of Chertsey town centre and train station, this apartment offers a rare combination of luxury, comfort, and convenience.

Leasehold



Approximate Area = 764 sq ft / 70.96 sq m

For identification only - Not to scale



Every attempt is made to assure accuracy, however
measurements are approximate and for illustrative purposes only. Not to scale.



EPC Rating: 78 C

g
GRANTS
HOMES



Grants Homes 155 Station Road, Addlestone, Surrey, KT15 2AT
T: 01932 858885 E: addlestone@grantshomes.co.uk

