



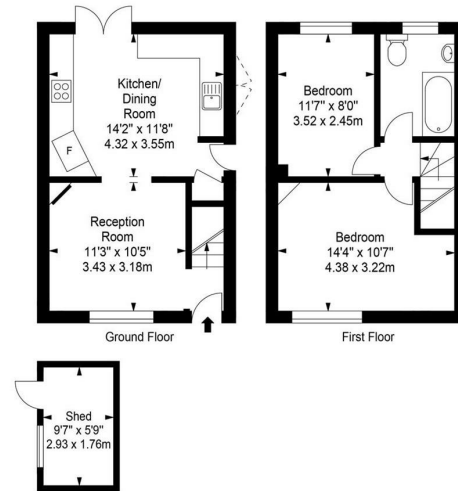
Bois Hall Road, Addlestone, KT15 2JL

## Guide Price £415,000

Offered to the market with no onward chain is this two bedroom semi detached house with a private garden, ideally located less than a half a mile from Addlestone train station and town centre. On the ground floor accommodation comprises of a living room with wood flooring and fireplace, a large fitted kitchen with space for dining with doors leading out onto a private garden. The first floor houses two double bedrooms and modern bathroom with shower over bath. Externally, the rear garden is mainly laid to lawn with side access, and to the front is a block paved driveway for 2 vehicles. NB, Photos are pre-tenancy.

Approximate Area = 646 sq ft / 60.04 sq m

For identification only - Not to scale



Every attempt is made to assure accuracy, however measurements are approximate and for illustrative purposes only. Not to scale.

EPC: 56/85

Freehold

Grants Homes 155 Station Road, Addlestone, Surrey, KT15 2AT 01932 858885 [addlestone@grantshomes.co.uk](mailto:addlestone@grantshomes.co.uk)