



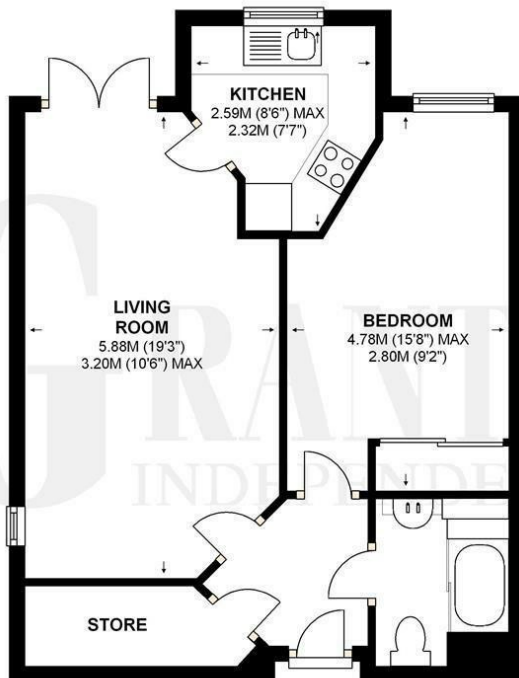
Matthews Lodge, Station Road, Addlestone, KT15 2FB



Offered to the market with no onward chain is this well presented one bedroom first floor retirement apartment in a modern development. , the property boasts a living room with juliet balcony, fully fitted kitchen with integral appliances, double bedroom with fitted wardrobes and a modern shower room. The development has pretty communal gardens, owners lounge, communal laundry, buggy parking with charge points as well as residents only parking and is ideally located for the town centre.

Leasehold





APPROXIMATE GROSS INTERNAL FLOOR AREA
44.7 SQ.M (481.7 SQ.FT)

This floor plan has been produced by Sketch Design for Grants Independent.
This plan is for illustrative purposes only and no responsibility can be given for any errors or omissions.
Appliances and utilities eg. baths, cookers etc are visuals only, style and shape may differ.



EPC Rating: 86 B



Grants Homes 155 Station Road, Addlestone, Surrey, KT15 2AT
T: 01932 858885 E: addlestone@grantshomes.co.uk

