

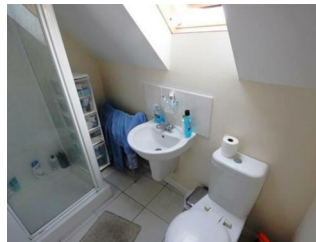
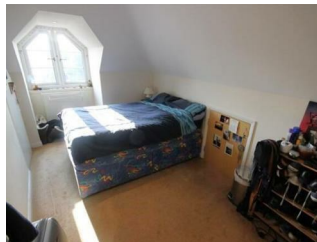


Trinity Court, High Street, Addlestone, KT15 1TU



Guide Price £199,950

Offered to the market with no onward chain is this top floor one bedroom apartment. Situated close to Addlestone town centre and offering an allocated parking space, the property offers a double bedroom, shower room and open plan living / kitchen space. Further benefits to the property include gas central heating, double glazing, 106 year lease and low outgoings.



Whilst every attempt has been made to ensure the accuracy of the floor plan contained here, measurements of doors, windows, rooms and any other items are approximate and no responsibility is taken for any error, omission, or mis-statement. This plan is for illustrative purposes only and should be used as such by any prospective purchaser. The services, systems and appliances shown have not been tested and no guarantee as to their operability or efficiency can be given.
Made with Metropix c2014

EPC: 76/77

Leasehold

Grants Homes 155 Station Road, Addlestone, Surrey, KT15 2AT 01932 858885 addlestone@grantshomes.co.uk