



Sandy Road, Addlestone, KT15 1HZ





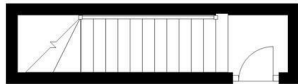
Offered to the market in great decorative order is this first floor two bedroom maisonette situated in a quiet residential road. This welcoming property offers good size accommodation throughout, with two double bedrooms both with fitted storage solutions, a modern tiled bathroom with white suite, dual aspect kitchen and a light and airy reception room with a rear aspect. Externally there is a private enclosed rear garden and garage in a nearby block. Further benefits include gas central heating, long lease and low outgoings.

Leasehold



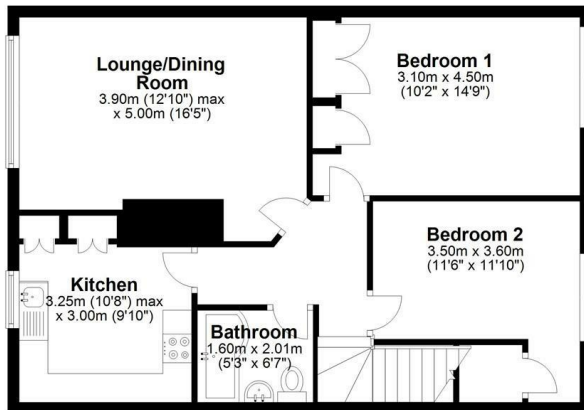
Ground Floor

Approx. 4.7 sq. metres (50.5 sq. feet)



First Floor

Approx. 65.2 sq. metres (702.3 sq. feet)



Total area: approx. 69.9 sq. metres (752.8 sq. feet)

Floor Plan measurements are approximate and are for illustrative purposes only.
Plan produced using PlanUp.



EPC Rating: 69 C

g
GRANTS
HOMES



Grants Homes 155 Station Road, Addlestone, Surrey, KT15 2AT
T: 01932 858885 E: addlestone@grantshomes.co.uk

