



Hazeldene, Crockford Park Road, Addlestone, KT15 2LD





Nestled in well-maintained communal gardens is this spacious and stylish two double bedroom top floor apartment, ideally located within easy reach of the town centre and railway station.

Inside, the apartment is well proportioned and thoughtfully laid out, featuring an abundance of storage throughout, including in the main bedroom.

The modern tiled bathroom is sleek and well-appointed, while the bright and airy L-shaped lounge/diner seamlessly flows into a contemporary fitted kitchen—perfect for entertaining or relaxing at home.

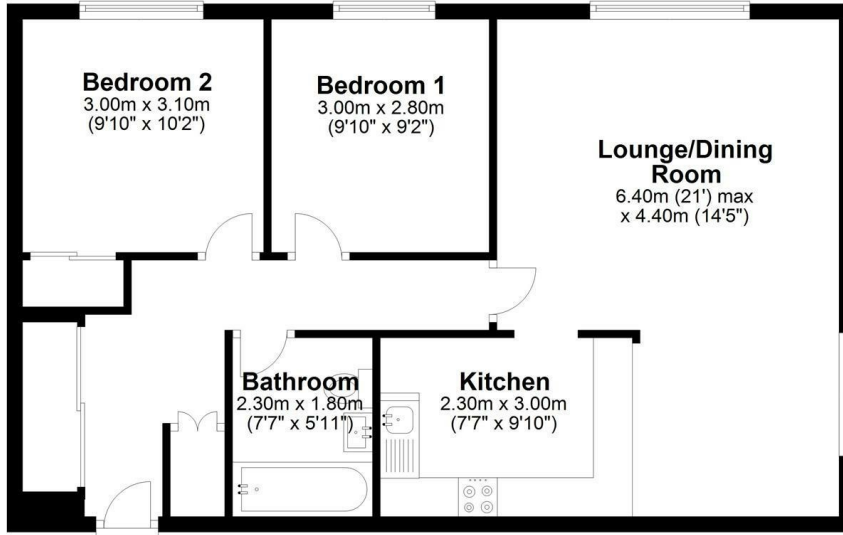
Large windows flood the living space with natural light and provide lovely views over the communal gardens. Additional benefits include a private garage, and a long lease making this an excellent opportunity for first-time buyers or savvy investors alike.

Leasehold



Second Floor

Approx. 66.6 sq. metres (717.4 sq. feet)



Total area: approx. 66.6 sq. metres (717.4 sq. feet)

Floor Plan measurements are approximate and are for illustrative purposes only.
Plan produced using PlanUp.



EPC Rating: 66 D





Grants Homes 155 Station Road, Addlestone, Surrey, KT15 2AT
T: 01932 858885 E: addlestone@grantshomes.co.uk