



Heath Drive, Brookwood, Woking, GU24 0HQ

**g**  
**GRANTS**  
**HOMES**





Situated just a 5-minute walk from Brookwood Station, this attractive and well-maintained three-bedroom home is ideally positioned for commuters while offering a peaceful residential setting.

The accommodation is arranged over two floors. On the ground floor, you'll find a bright front-aspect living room, a rear-aspect dining room, and a fitted kitchen with stable door to the garden. Upstairs, there are two generous double bedrooms—both featuring fitted wardrobes—a single bedroom, and a family bathroom with a white suite.

Outside, the property boasts a good-sized rear garden, mainly laid to lawn, with a patio area ideal for outdoor dining, a garden shed for storage, and convenient rear access that leads directly to the garage block. The front garden is neatly presented, laid to lawn with a pathway leading to the entrance.

This is an ideal home for families or professionals looking for space, comfort, and excellent transport links, with the added benefit of no onward chain.

Freehold





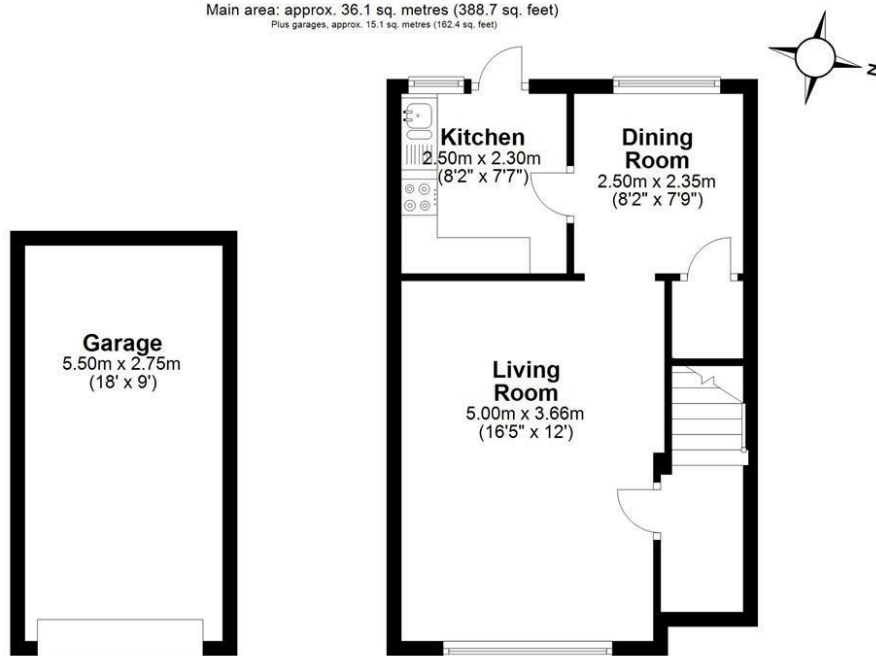
EPC: D61





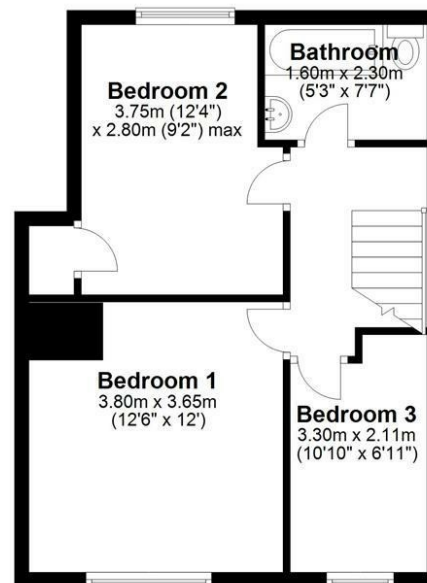
### Ground Floor

Main area: approx. 36.1 sq. metres (388.7 sq. feet)  
Plus garages, approx. 15.1 sq. metres (162.4 sq. feet)



### First Floor

Approx. 41.3 sq. metres (444.6 sq. feet)



Main area: Approx. 77.4 sq. metres (833.3 sq. feet)  
Plus garages, approx. 15.1 sq. metres (162.4 sq. feet)

Floor Plan measurements are approximate and are for illustrative purposes only.  
Plan produced using PlanUp.

