



Beaumont Apartments, Hawker Drive, Addlestone, KT15 2FA



Offered to the market is this beautifully presented two double bedroom apartment, complete with two private balconies and an allocated parking space.

Situated on the second floor of a modern development built by Redrow Homes in 2019, this spacious and stylish property offers well-designed accommodation throughout. The heart of the home is an impressive open-plan living area, featuring a sleek fully fitted kitchen seamlessly flowing into the lounge and dining space, with direct access to one of the balconies—perfect for indoor-outdoor living.

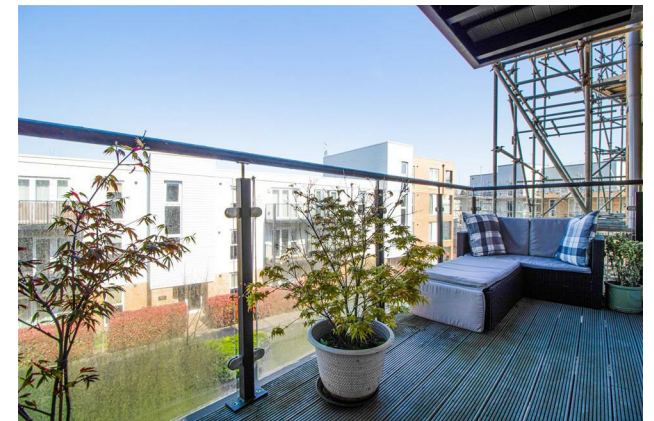
The main bedroom benefits from an en suite shower room, while both double bedrooms enjoy access to the second balcony, creating a light and airy atmosphere throughout. A contemporary family bathroom, floor-to-ceiling windows that flood the apartment with natural light, and a secure entry system further enhance the appeal.

Additional advantages include a long lease, access to landscaped communal green spaces, and the remaining term of the NHBC warranty for peace of mind.

Conveniently located within walking distance of both Weybridge and Addlestone town centres, the apartment is close to a variety of amenities including gyms, a cinema, supermarkets, and restaurants. Excellent transport links are nearby, with Weybridge station providing a swift commute into London and the M25 just under two miles away.

Leasehold



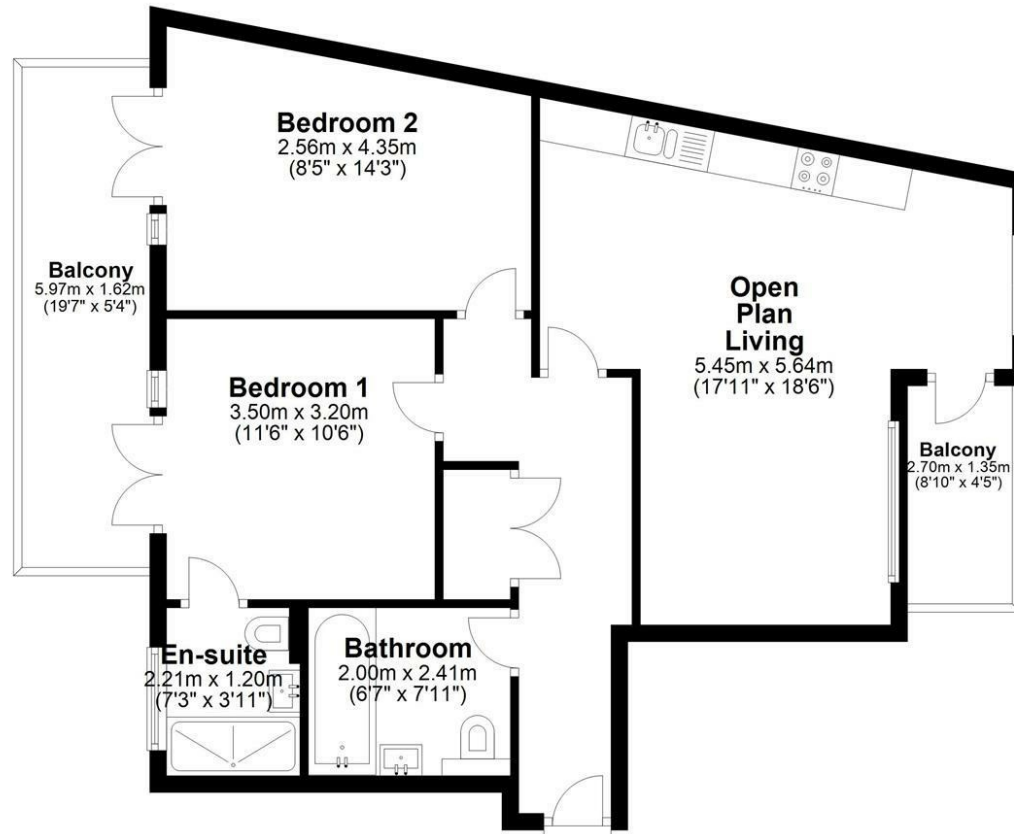
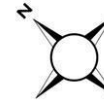


EPC: B84



Second Floor

Approx. 67.9 sq. metres (730.4 sq. feet)



Total area: approx. 67.9 sq. metres (730.4 sq. feet)

Floor Plan measurements are approximate and are for illustrative purposes only.
Plan produced using PlanUp.