



Rowhurst Avenue, Addlestone, KT15 1NF

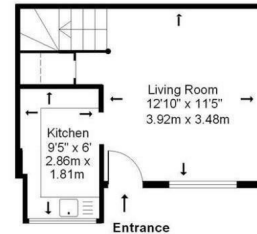
Guide Price £250,000

Offered to the market with no onward chain, this charming one-bedroom freehold house is ideal for first-time buyers or those seeking a low-maintenance home. Situated in a peaceful residential road with views over a central green, this property provides a tranquil setting while still being conveniently located. The ground floor features a spacious living room, perfect for relaxing, and a modern, well-equipped kitchen. Upstairs, you'll find a generously sized double bedroom, along with a tiled bathroom featuring a white suite and a shower over the bath for added convenience.

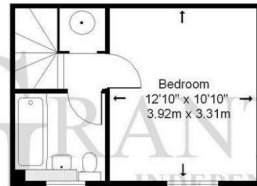
Additional benefits include double glazing,, ample residents' parking, and a small front garden. NB, Property Photos are Pre-Tenancy.



Ground Floor



First Floor



Not to scale

Approximate Gross Internal Floor Area: 44m sq (473sq ft)

Whilst every attempt has been made to ensure the accuracy of this floor plan, room sizes and measurements are approximate and accordingly should not be relied upon for carpets and furnishings. These plans are for representation purposes only and no responsibility can be given for errors and omissions.

EPC: 74/96

Freehold

Grants Homes 155 Station Road, Addlestone, Surrey, KT15 2AT 01932 858885 addlestone@grantshomes.co.uk