



St. Georges Road, Addlestone, KT15 2AY

g
GRANTS
HOMES



Offered to the market is this beautifully presented two-bedroom semi-detached house is a fantastic opportunity. Set on a corner plot with ample parking and a spacious front garden, the property features an inviting entrance porch, a bright and airy living room, a well-appointed kitchen, a utility area, and a bathroom with a white suite on the ground floor.

Upstairs, the main dual-aspect double bedroom provides plenty of natural light. The property also boasts a second double bedroom and boasts a modern shower room.

The rear garden is a lovely space, featuring a paved area, a lawn, and a shed, with the garden wrapping around the side to meet the front garden and driveway.

Conveniently located just a stone's throw from Victory Park and only a few minutes' walk from the town centre and railway station, this charming home is a must-see for anyone looking to move into the area.

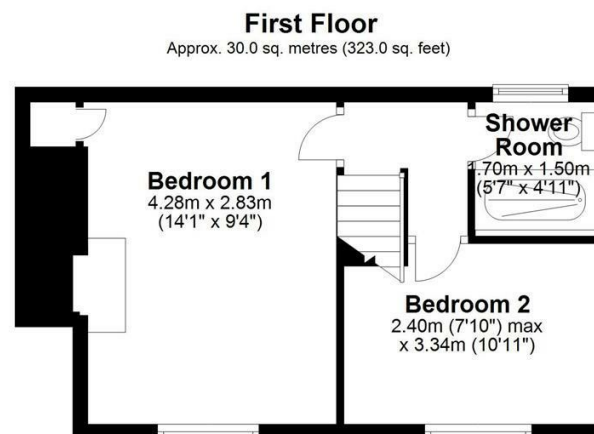
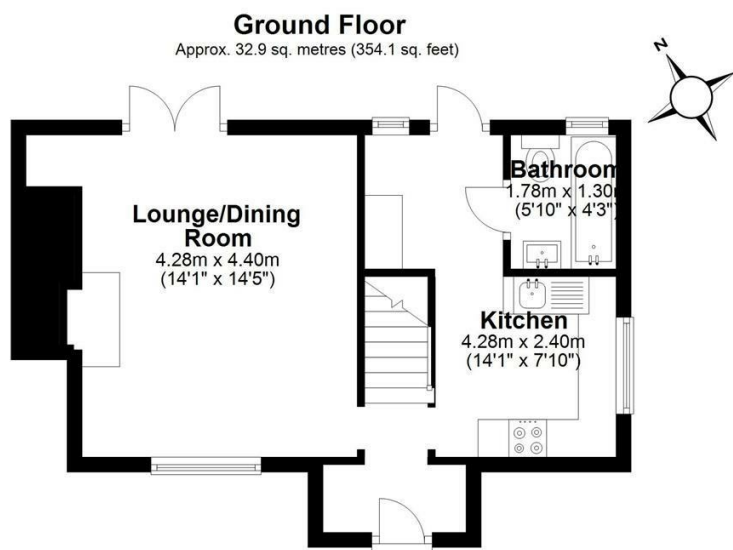
Freehold





EPC: D65





Total area: approx. 62.9 sq. metres (677.0 sq. feet)

Floor Plan measurements are approximate and are for illustrative purposes only.
Plan produced using PlanUp.

