



Harrow Close, Addlestone, KT15 2GH

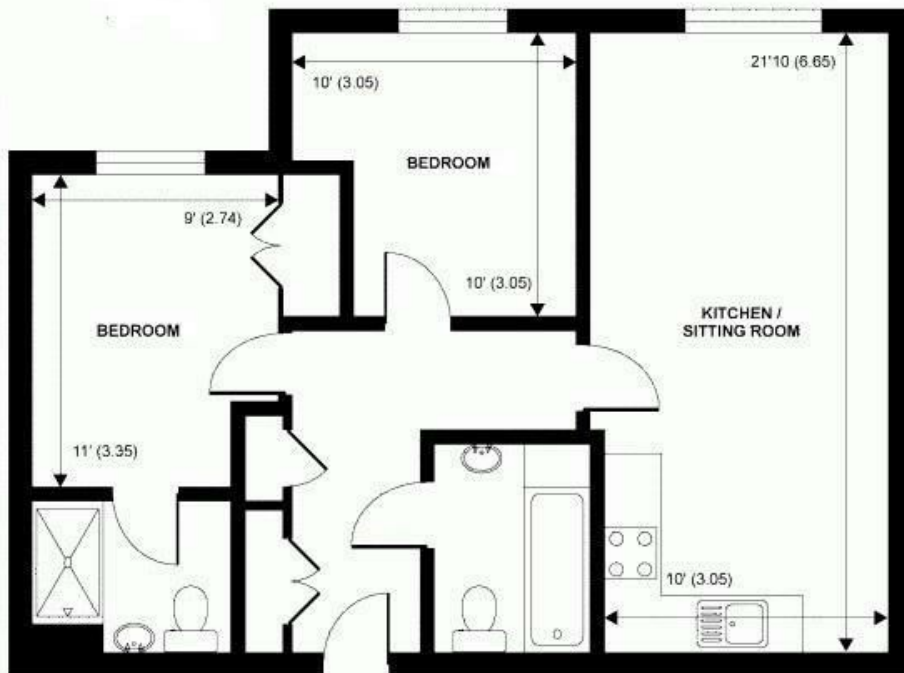




Presented in good condition with no onward chain is this fantastic two double bedroom ground floor apartment with an allocated parking space. Situated within walking distance of Chertsey town centre and train station this modern apartment has been well cared for by our vendors and consists of a main bedroom with en suite shower room, a second double bedroom, family bathroom and good size open plan kitchen / living room. Further benefits to this lovely apartment include gas central heating, secure door entry system and the allocated parking space being immediately outside the property. NB, Photos are pre-tenancy.

Leasehold





abt 612 SQFT (INTERNAL)

APPROX. GROSS INTERNAL FLOOR AREA 612 SQ FT 56.9 SQ METRES



EPC Rating: 85 B



Grants Homes 155 Station Road, Addlestone, Surrey, KT15 2AT
T: 01932 858885 E: addlestone@grantshomes.co.uk

